

Modular DSP Online UPS MR33100 - 1000KVA 3 Phase

MR SERIES

Modular Hi Performance Online UPS



UPS Cabinet HMI Panel



Module LCD Panel

Features

- Centralized Paralled Control with Module Distributed Control
- Lowest Cost of Overall System (Cost, Maintenance, Mangement)
- N+X Parallel Redundancy Power 50KVA upto 1000KVA
- True Online Double Conversion with 3-level Inverter Technology
- Dual Energy Control Modules Design
- 3-level Intelligent Charging Modes : Buck, Boost, Float
- Load Bus Synchronization
- HMI Touch-screen display for user's friendly operation
- High Power Density up to 600KVA per rack for space saving
- Powerful Output Power Factor PF 1.0 for Partial & Full Load
- Efficiency UPS Up to 96.5%
- Compact in size, only Rack19" 3U height
- UPS Module Long Life UPS Superior MTBF and Low MTTR
- Emergency Power Off (EPO)
- Automatic Firmware Upgrade Via LCD Display
- EASY Management Battery Pack setting
- Isolated Transformer output option
- Powerful charger built in Modular and UPS frame
- Versatile communication interfaces provided for different applications
- Indoor Use IP21 Application
- Backfeed Protection / Scalable Power / Autonomy Time
- TIS1291.Part 1-2553, Part2-2553, Part3-2555 : C3
- CE : IEC 62040-1,-2,-3, IEC 61000
- ISO9001/ISO14001 : 2015 Certification Manufacture



Modular Rack Option

- Isolated Transformer
- MBM & PDU Rack



3U Battery Unit

Battery Unit Rack



MR3340/50 3/3Phase



3U Battery Unit

APPLICATIONS



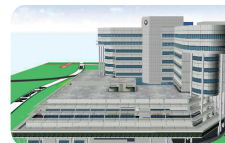
• Industrial Equipment



• Postal & Telecommunications



• Data Center & Server Room



• Hospital, Medical Equipment



• Large Internet Computer Room



• Financial And Securities

Chuphotic UPS Product range 10KVA to 500KVA have been wide useful to protect Electronic Equipment such as Computer, Server, Networks, PABX, CCTV, Telecommunications, Medical & Scientific Equipment and Industrial Machine from Power Quality Problem in Over / Under Voltage, Blackout, Surge, Spike, Harmonic, Noise and Frequency Drift.



มอก.1291
เล่ม 1-2553
เล่ม 2-2553
เล่ม 3-2555



IEC-62040



WARRANTY



www.chuphotic.com

Modular DSP Online MR Series

MODEL		MR33100	MR33150	MR33200	MR33300	MR33400	MR33500	MR33600	MR33800	MR331000
Capacity (VA / Watts)	UPS Cabinet	50~100 / 50~100k	50~150 / 50~150k	50~200 / 50~200k	50~300 / 50~300k	50~400 / 50~400k	50~500 / 50~500k	50~600 / 50~600k	50~800 / 50~800k	50~1000 / 50~1000k
	MR Module	MR3340 : 40kVA / 40kW OR MR3350 : 50kVA / 50kW								
	Max. Numver	2	3	4	6	8	10	12	16	20
INPUT										
Nominal Voltage		380 / 400 / 415 Vac, (3Ph-N+PE)								
Operating Voltage range		138~305Vac Linear derating; 305~485Vac for 100% Load;								
Operating Frequency range		40Hz - 70Hz								
Power Factor		PF ≥0.99								
Harmonic Distortion (THDi)		3% (100% Linear Load)								
Bypass Voltage range		Max.voltage : 220V: +25% (optional+10%,+15%,+20%); 230: +20% (optional+10%,+15%); 240V: +15% (optional+10%) Min. voltage: -45% (optional-10%,+20%,-30%)								
Bypass Frequency range		Frequency protection rang : ±10%								
Generator input		Support								
OUTPUT										
Rated Voltage		380 / 400 / 415Vac, (3Ph-N+PE)								
Power Factor		PF 1								
Voltage Regulation		±1%								
Frequency in Line Mode		±1% / ±2% / ±4% / ±5% / ±10% of Rated Frequency (optional)								
Frequency in Bat. Mode		(50 / 60 ± 0.1%)Hz								
Crest Factor		3 : 1								
Hamonic Distortion (THDv)		≤1% with Linear Load ≤4% with Nonlinear Load								
Efficiency		96.5%								
BATTERY										
Battery Voltage		Optional Voltage : ±180V / ±192V / ±204V / ±216V / ±228V / ±240Vdc / ±264Vdc / ±276Vdc / ±288Vdc / ±300Vdc (30 / 32 / 34 / 36 / 38 / 40 / 42 / 44 / 46 / 48 / 50pcs)								
Charge Current(A)	UPS cabinet	60A(Max.)	80A(Max.)	120A(Max.)	160A(Max.)	200A(Max.)	240A(Max.)	300A(Max.)	400A(Max.)	500A(Max.)
	HPM module	20A(Max.)								
SYSTEM FEATURES										
Transfer time		Utility to Battery : Oms; Utility to bypass : Oms								
Overload	Line Mode	110% for 60min, 125% for 10min, 150% for 1min, then transfer to bypass								
	Bypass Mode	<135% @ <30°C or 125%@ <40°C : continuously 1000% for 100ms, then shut down								
Overheat		Line Mode : Switch to Bypass; Backup Mode: Shutdown UPS immediately								
Low Battery Voltage		Alarm and Switch off								
Self - Diagnostics		Up on Power On and Software Control								
EPC (optional)		Shutdown UPS immediately								
Battery		ABM : Advanced Battery Management								
Noise Suppression		Complies with EN62040-3 EMC								
Audible & Visualalarms		Line Failure, Battery Low, Overload, System Fault								
Status LED & LCD display		Line Mode, Bypass Mode, Battery Bad, Overload & UPS Fault								
Reading on the LCD display		Input, Output, Battery, Command, Setting, Maintenance								
Communicatorinterface		CAN, RS485, NET, Parallel, Dry Contact (NO / NC) : Relay Card(optional),SNMP Card, Battery Temperature Sencer								
ENVIRONMENTAL										
Operation Temperature		0°C ~ 40°C								
Storage Temperature		-25°C ~ 55°C								
Humidity Range		RH 0~95% (non condensing)								
Altitude		<1500m Sea level								
Noise Level (from 1M distance)		<63dB	<65dB	<68dB	<70dB					
PHYSICAL										
Dimension WxHxD (mm)	UPS Cabinet (SM)	600x1200x850		600x1600x 850	600x2000x850		1200x2000x 850	1400x2000x 850	1200x2000x850x2	
	UPS Cabinet (FM)									
	MR Mudule	442x130(3U)x620								
Net weight (kg)	UPS Cabinet	170	230	260	280 / 470	650	720	900	1300	
	MR Module	32								
STANDARDS										
TIS STANDARD		TIS.1291 Part1-2553, Part2-2553, Part3-2555								
CE : LVD / EMC / Performance		LVD : IEC / EN 62040-1, IEC / EN 60950-1 / EMC : IEC / EN62040-3, IEC61000-4 / Performance : IEC / EN 62040-3								

Specifications subject to change without prior notice.

CHU.BRO-65.MR33 Modular.Rev1.00/2020

บริษัท ชูฟอทิก จำกัด

949 หมู่ 9 ต.ลำโรงเหนือ อ.เมืองสมุทรปราการ จ.สมุทรปราการ 10270

โทรศัพท์: 02 186 3010 แฟกซ์: 02 186 3018-9

www.chuphotic.com

E-mail: ups@chuphotic.com

ตัวแทนจำหน่าย :