

JUPITER TD33xx U1.0

Online Double Conversion UPS with Isolation Transformer



Applications

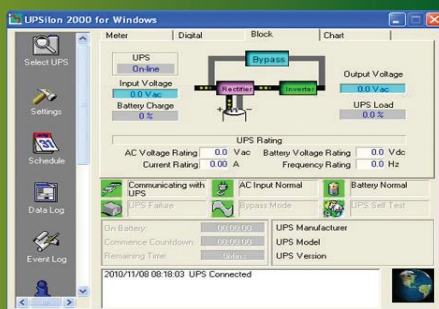
- Medical Equipment
- Hospital Equipment
- Banking & Financial
- Server, Data Network
- Telecommunication
- Transportation
- Industrial Grade
- Heavy Duty Grade
- Assembly Line



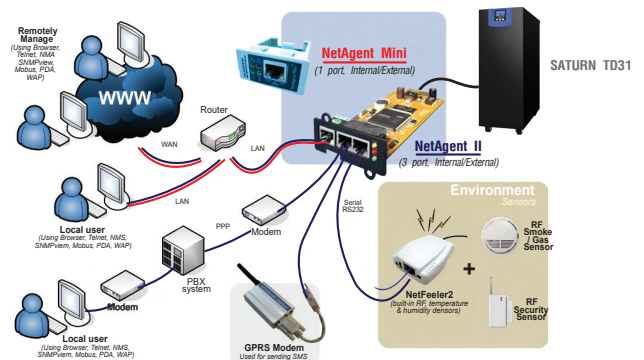
Features

- True Online Double Conversion UPS
- Advance Digital DSP Control with IGBT Technology
- Built in Output Isolation Transformer
- Sine Wave by Pulse with Modulation(PWM)
- Pure Sine Wave output with less than 3%THDv
- Output Voltage 1Phase 220Vac \pm 1%
- Output Power Factor PF0.9
- Battery Unit with Battery Monitoring System (BMS)
- Battery Status & Remaining Time Function
- EPO : Emergency Power Off
- Under / Over Voltage, Over Load, Short Circuit and Over Temperature Protection
- Long Back up with External Battery Unit
- Auto Bypass / Manual Bypass MCB
- Parallel Redundant N+X (Option)
- Intelligent RS232 / RS485 and communication port
- Soft Restart AC / DC by Cold Start Function
- EMI / RFI and Power Line Noise Protection
- LCD HMI and LED Display with UPS Status
- UPSilon2000 UPS Monitoring Software in OS Windows 95/98/NT/2000/ME/XP, Novell and Unix
- Remote Monitoring Network and SNMP Card (option)
- TIS 1291 Part 1-2553, Part 2-2553, Part 3-2555:C1
- CE : IEC/EN62040-1,-2,-3, IEC/EN61000
- ISO9001/ ISO14001 : 2015 Certified Manufacturer

UPSilon 2000 UPS monitoring



SNMP / HTTP monitor capability (option)



มอก.1291
เล่ม 1-2553
เล่ม 2-2553
เล่ม 3-2555



JUPITER TD33xx U1.0

Online Double Conversion UPS
with Isolation Transformer

SPECIFICATIONS

Model	Long Backup UPS	TD3320	TD3330	TD3340	TD3350	TD3360	TD3380	TD33100	TD33120	
Capacity	kVA/kW	20/18	30/27	40/36	50/45	60/54	80/72	100/90	120/108	
TECHNOLOGY										
Controller		DSP : Digital Signal Processing Controller								
Technology		True Online Double Conversion UPS with IGBT with Isolation Transformer								
INPUT										
Phase		Three Phase - N + PE								
Voltage Range		220/380 - 25%+25% (380/400/415Vac Selectable) (Range 285-475Vac)								
Bypass Voltage		220/380 ± 10% (380/400/415Vac Selectable)								
Frequency		50Hz ± 10% (45-55Hz) (RANGE 42.5-62.5Hz)								
Power Factor		PF ≥ 0.8 at 100% Load								
Input Current Distortion (THDi)		THDi ≤ 5%								
Soft Start Capacity		Yes : AC / DC								
OUTPUT										
Phase		Three Phase - N + PE (Selectable)								
Voltage		220/380Vac ± 1% (200Vac/208Vac option)								
Frequency		Synchronizing with AC input when its frequency are within 50Hz ± 1% with phase shift less than 3 degree, 50Hz ± 0.1% at battery mode								
Wave Form		Pure Sine Wave								
Output Power Factor		PF 0.9								
Total Harmonic Distortion (THDv)		<2% at Full Load (Linear Load) , <5% at Full Load (Non-linear Load)								
Transfer Time		Zero Transfer Time (0msec)								
Transient Recovery Time		90% for ≤ 60ms (Full RCD Load) : Step Load								
Overload Capability		125% load for 10 min, ≤ 150% load for 1 min, >150% for 300ms then automatic transfer to bypass								
Crest Factor		3:1								
Protection		Over/Under Voltage, Overload, Short Circuit, Over Temp., Battery Protection and Low Battery Shutdown								
Efficiency		AC to AC >91% / DC to AC >92% / Eco Mode >98%								
PROTECTION										
EMI/RFI Attenuation		<40dB(A)								
Surge Protection		Indoor : UL1449 Cat.A,B / IEC61643 LPZ2, 3 / In 3kA at 8/20µsec								
Surge Energy Dissipation		SPD300Vac : 3x220 joules In 2msec at Power 30kW I _{max} =6500A V _{clamp} 775V								
Protection Degree		IP30								
Mode system		ECO and EPO Function								
Cooling		Forced Wind (Fan speed automatically change on load varies)								
Maintenance Bypass		MCB for Main Input - Maintenance Bypass								
Parallel Redundancy		N+1 / N+X Parallel Redundancy up to 6 Unit								
BATTERY										
Type		AGM / Sealed Lead Acid Battery Maintenance free (SLA), (UL-94 V0 option)								
Battery Voltage		384Vdc : 12V 32Pcs (Battery Monitoring System BMS : option)								
Battery Unit		BU1 : 12V 9.4Ah x32, x64Pcs / BU2 : 12V 50Ah, 65Ah, 100Ah x32Pcs								
Charger Standard / Long backup		1-10A Settable				1-20A Settable				
Charging Time		4-8 Hours to Cap. 90% after Load Discharge								
INDICATOR&COMMUNICATION										
LED display		Utility Line Normal, Inverter, Bypass, Battery, UPS Fault								
LCD display (HMI Touch Screen)		Utility Line Normal, Inverter, Bypass, Battery, Load, Battery mode, Frequency, UPS Fault								
Audible alarm		Utility Line Failure, Low Battery, Overload, Fault								
Communication		RS232 Port : Upsilon2000, Dry Controt, RS485 Modbus (SNMP Adapter Optional)								
Safety/EMC / Performance TIS / CE:		TIS.1291 Part1-2553, Part2-2553, Part3-2555 : C3 / CE:IEC62040-1, IEC62040-2, IEC62040-3								
Manufacturer Std.		QMS : ISO9001:2015 / ISO14001:2015								
ENVIRONMENT										
Temperature		0-40°C								
Humidity		0-95% (Non-Condensing)								
Audible Noise		≤ 65dB at 1 meter								
PHYSICAL										
Dimension (WxDxH) mm		540x620x1120			660x860x1550			1000x900x1800		
Weight (kg)	Long Backup UPS	225	273	500	550	580	700	850		
	Battery Unit	60+85	60+130	100+380	100+480	100+640	100+900	100+1000	100+1200	

* All specification are subject to change without prior notice.

CHU.BRO-42.UPS.JUPITER TD33xx U1.0.Rev1.00I2020

บริษัท ชูฟอทิก จำกัด

949 หมู่ 9 ต.ลำโพงเหนือ อ.เมืองสมุทรปราการ จ.สมุทรปราการ 10270

โทรศัพท์: 02 186 3010 แฟกซ์: 02 186 3018-9

www.chuphotic.com

E-mail: ups@chuphotic.com

ตัวแทนจำหน่าย :