

VENUS ULTIMATE 33

DSP TRUE ONLINE DOUBLE CONVERSION UPS



Advance DSP Control Technology

The advance DSP digital control technology enable UPS more stable performance and with battery quality.

Active Input Power Factor Correction (PFC)

Digitalized control of the PFC enable the UPS to keep the Input power factor above 0.99 to prevent possible electric grid pollution and meanwhile mostly save the cost.

Wide Input and Frequency Range

We intentionally widen the range of input factors to make sure the UPS can apply to various environment, which will Effectively sustain the battery charging even in unstable power environment so that the service life of the UPS could be obviously prolonged.

Adaptive Load Management

This technology allows the UPS to be set up at a fixed 50Hz or 60Hz output while it also can intelligently monitor power usage and automatically sheds and reconnects loads in order to prevent generator overload.

Support the Generator

The wide range of input voltage and frequency can effectively separate the harmful electric wave produces the generators and provide safe and reliable power supply.

High-reliability Parallel Redundancy Technology

N+X parallel redundant technology means that there is a UPS unit providing protection for the key loads. When any one of the system was failure, the UPS could provide the high quality power to the key loads due to the additional one, which makes the system more reliable.

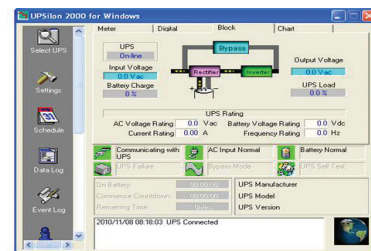
Features

- True On-line Double Conversion UPS
- Advance Digital DSP control and IGBT technology
- High input Power Factor Correction PFC >0.99
- Low Input Current Harmonic THDi ≤5%
- Output Pure Sine Wave THDv <3%
- Wide Input Voltage / Frequency Range (208-478Vac)
- Included Battery (10-20kVA) / Long Backup (30-40kVA)
- Output Power Factor PF0.9
- AC & DC Cold Start function
- Easy Interface LED & LCD Panel with Function Switch
- Built in Static Transfer Switch (SCR)
- Advanced Battery Management (ABM)
- Intelligent Forced wind (Fan speed control)
- Economy mode (ECO : option)
- Emergency Power Off (EPO : option)
- Fully Protection Function
- USB communication port, with UPSilon 2000 Monitoring
- SNMP / HTTP Capability / Dry Contact, Modbus (option)
- Parallel Redundant N+X technology(option)
- Intelligent Battery Monitoring system-MMBM (option)
- TIS.1291 Part 1-2553, Part 2-2553, Part 3-2555 : C3
- Certificate CE : IEC62040-1,-2,-3, IEC55022, IEC61000
- ISO9001:2015/ISO14001:2015 Certified Manufacture

LED & LCD DISPLAY REAL TIME STATUS



1. LCD Display
2. On-Line Mode
3. Battery Mode
4. Output
5. Bypass Mode
6. Function Switch
7. ON/OFF Switch



UPSilon 2000 UPS monitoring software

APPLICATIONS



- Industrial Equipment
- Postal & Telecommunications
- Data Center & Server Room
- Hospital, Medical Equipment
- Large Internet Computer Room
- Financial And Securities



มอก.1291
 เล่ม 1-2553
 เล่ม 2-2553
 เล่ม 3-2555



IEC-62040



WARRANTY



www.chuphotic.com

VENUS ULTIMATE 33

DSP TRUE ONLINE DOUBLE CONVERSION UPS

SPECIFICATIONS

Model	Standard UPS	VNU3310S	VNU3315S	VNU3320S		
	Long Backup UPS	VNU3310L	VNU3315L	VNU3320L	VNU3330L	VNU3340L
Capacity	kVA/kW	10kVA/9kW	15kVA/13.5kW	20kVA/18kW	30kVA/27kW	40kVA/36kW
TECHNOLOGY						
Controller	DSP : Digital Signal Processing Controller					
Technology	True Online Double Conversion UPS with IGBT and Power Factor Correction (PFC) Technology					
INPUT						
Phase	Three Phase - N + PE					
Voltage Range	220/380-35%+25% (380, 400, 415 Selectable) (Range 208-478Vac)					
Bypass Voltage	220/380 ±10% (380, 400, 415 Selectable)					
Frequency	50Hz ± 8% (46-54Hz)					
Power Factor	PF ≥0.99 at 100% Load					
Input Current Distortion (THDi)	≤5%					
Soft Start capacity	Yes : AC / DC					
OUTPUT						
Phase	Three Phase - N + PE					
Voltage	220/380, 230/400, 240/415Vac ±1% (200Vac/208Vac option)					
Frequency	Synchronizing with AC input when its frequency are within 50Hz ±1% with phase shift less than 3 degree, 50Hz ±0.1% at battery mode					
Wave Form	Pure Sine Wave					
Output Power Factor	PF0.9					
Total Harmonic Distortion (THDv)	<3% at Full Load (Linear Load), <5% at Full Load (Non-linear Load)					
Transfer Time	Zero Transfer Time (0msec)					
Transient Recovery Time	90% for ≤60ms(Full RCD Load) : Step Load					
Overload Capability	125% load for 10 min, ≤150% load for 1 min, >150% for 300ms then automatic transfer to bypass					
Crest Factor	3:1					
Protection	Over/Under Voltage, Overload, Short Circuit, Over Temp., Battery Protection and Low Battery Shutdown					
Efficiency	AC to AC ≥91% / DC to AC ≥89%					
PROTECTION						
EMI / RFI Attenuation	<40dB(A)					
Surge Protection	UL recognized surge protection to Std. UL1449 Cat.A / IEC61643-11, LPZ3					
Surge Energy Dissipation	3x220 joules at 10/1000µsec (Imax=8000A Vclamp 775V)					
Protection Degree	IP30					
Mode system	ECO and EPO Function(option)					
Cooling	Forced Wind (Fan speed automatically change on load varies)					
Maintenance Bypass	(option)					
Parallel Redundancy	N+1 / N+X Parallel Redundancy up to 6 Unit					
BATTERY						
Type	AGM / Sealed Lead Acid Battery maintenance free (SLA), (UL-94 V0 option)					
Battery Voltage	192VDC	240VDC	240VDC	240VDC	+192VDC/N/-192Vdc	+240VDC/N/-240
Number of Battery	12V 9.4Ah x 16PCS	12V 9.4Ah x 20PCS	12V 9.4Ah x 20PCS	12V 9.4Ah x 20PCS	External. Batt. : 32PCS	External. Batt. : 40PCS
Charger Standard / Long Backup	1.5A / 3.5A	1.5A / 3.5A	1.5A / 3.5A	1.5A / 3.5A	3.5A / 7A	3.5A / 7A
Charging Time	6-8 Hours to Cap. 90% after Load Discharge					
INDICATOR&COMMUNICATION						
LED display	Utility Line Normal, Inverter, Bypass, Battery, UPS Fault					
LCD display	Utility Line Normal, Inverter, Bypass, Battery, Load, Battery mode, Frequency, UPS Fault					
Audible alarm	Utility Line Failure, Low Battery, Overload, Fault					
Communication	USB Port with UPSilon 2000 for Windows (MODBUS and SNMP adapter are option)					
STANDARD						
Safety / EMC / Performance : TIS / CE	TIS.1291 Part1-2553, Part2-2553, Part3-2555 : C3 / CE, EN62040-1,-2,-3, EN55022, EN61000					
Manufacturer Std.	QMS : ISO9001:2015 / ISO14001:2015					
ENVIRONMENT						
Temperature	0-40°C					
Humidity	0-95% (Non-Condensing)					
Audible Noise	≤60dB at 1 meter					
PHYSICAL						
Dimension (WxDxH) mm	260x533x501		260x710x717		260x710x717	260x710x717
Weight (kg)	Standard UPS	60	70	70	-	-
	Long Backup UPS	29	30	30	58	62

* All specification are subject to change without prior notice.

Chuphotic.BRO-13.UPS VENUS ULTIMATE 33.Rev.1.10/2019

บริษัท ชูไฟติก จำกัด

949 หมู่ 9 ต.ลำไทรเหนือ อ.เมืองสมุทรปราการ จ.สมุทรปราการ 10270

โทรศัพท์: 02 186 3010 แฟกซ์: 02 186 3018-9

www.chuphotic.com

E-mail: ups@chuphotic.com

ตัวแทนจำหน่าย :