

# SATURN TD31 10-40KL

True On-Line Double Conversion UPS  
Low Frequency with Isolation Transformer



## Applications

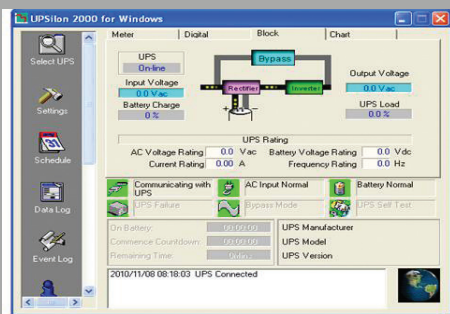
- Medical Equipment
- Hospital Equipment
- Banking & Financial
- Server, Data Network
- Telecommunication
- Transportation
- Industrial Grade
- Heavy Duty Grade
- Assembly Line



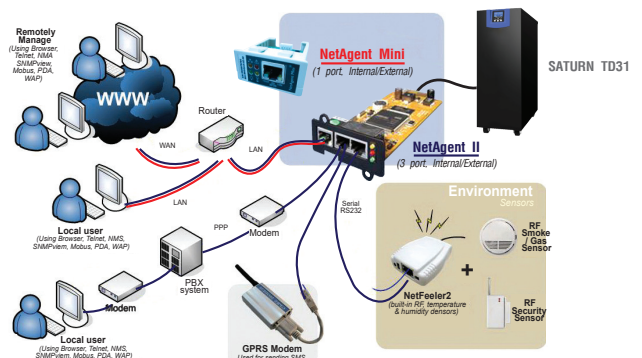
## Features

- True Online Double Conversion UPS
- Microprocessor Control with IGBT Technology
- Built in Output Isolation Transformer
- Sine Wave by Pulse with Modulation(PWM)
- Pure Sine Wave output with less than 3%THDv
- Output Voltage 1Phase 220Vac  $\pm$  1%
- Output Power Factor PF0.9
- Advance Battery Management (ABM)
- Battery Status & Remaining Time Function
- EPO : Emergency Power Off (20-40kVA)(Option)
- Under / Over Voltage, Over Load, Short Circuit and Over Temperature Protection
- Long Back up with External Battery Unit
- Auto Bypass / Manual Bypass
- Parallel Redundant N+X 20-40kVA (Option)
- Intelligent RS232 / RS485 and communication port
- Soft Restart AC / DC by Cold Start Function
- EMI / RFI and Power Line Noise Protection
- LCD and LED Display with UPS Status
- UPSilon2000 UPS Monitoring Software in OS Windows 95/98/NT/2000/ME/XP, Novell and Unix
- Remote Monitoring and SNMP Card (option)
- TIS 1291 Part 1-2553, Part 2-2553, Part 3-2555:C1
- CE : IEC62040-1,-2,-3, IEC61000
- ISO9001/ ISO14001 : 2015 Certified Manufacturer

## UPSilon 2000 UPS monitoring



## SNMP / HTTP monitor capability (option)



มอก.1291  
เล่ม 1-2553  
เล่ม 2-2553  
เล่ม 3-2555



# SATURN TD31 10-40KL

## SPECIFICATION

Model	Standard UPS	TD3110KL	TD3115KL	TD3120KL	TD3130KL	TD3140KL
<b>CAPACITY</b>	VAV PF0.9	<b>10kVA / 9kW</b>	<b>15kVA / 13.5kW</b>	<b>20kVA / 18kW</b>	<b>30kVA / 27kW</b>	<b>40kVA / 36kW</b>
<b>INPUT 3Phase</b>	Voltage (Three phase)	380/400/415Vac ± 25% 3Ph + N - PE				
	Frequency	50/60Hz ± 10% (Auto selection)				
	By Pass. 1Phase	220/230/240Vac ± 10%. (to Backup)				
<b>OUTPUT 1Phase</b>	Voltage (single phase)	220/230/240Vac ± 1%. (100/110/120/200 option)				
	Frequency	50/60 Hz: ± 0.1% (Auto-select Default)				
	Wave Form	Pure sine wave				
	Total Harmonic Distortion(THDv)	<2% at full load(Linear load), <5% at full load (Non-linear load)				
	Transient condition	Less than 5% for 100% instantaneous load variation (Step Load)				
	Overload capability	125% load for 2min, 150% for 30 sec, >150% for 0.5 sec then automatic transfer to bypass				
	Crest Factor ratio	3:1				
	Protection	Backfeed, Over heat, overload, over voltage, under voltage, short circuit proof and battery low voltage shutdown				
<b>EFFICIENCY</b>	Output Power Factor (PF)	0.9				
	AC to AC (at full load, PF1.0)	>92%				
<b>BATTERY</b>	Bypass mode	>96%				
	Type	SLA : Sealed Lead-Acid (maintenance free) Rechargeable Battery (option : UL94-V0)				
	Battery voltage / Capacity	192Vdc / 16pcs		384Vdc / 32pcs		
	Continuous recharging time	Less than 3 hours to 90% after full load discharge				
<b>SURGE PROTECTION</b>	Charger current Standard/Long backup	7A		1-25A		
	Standard Surge Protection	UL recognized surge protection to Std. UL1449				
<b>TRANSFER TIME</b>	Surge Energy Dissipation	220 joules 300Vac (510 joules option) (2 microsec wave form)				
	Mains Fail or Recover Restart	Zero Transfer (0 ms.)				
	UPS to Bypass and Vice versa	Zero Time (Make before break) (option)				
<b>MANUAL CONTROLS</b>	Auto Reverse	After overload return to normal				
	Maintenance Bypass switch	Option or Circuit Breaker			Circuit Breaker	
<b>INDICATOR</b>	Front panel LED's	Line, Inverter, Bypass and Battery				
	Front panel LCD	Input voltage, Output voltage, Frequency, Battery voltage, % watt, %VA, Load level, Over load, Bypass, Line, Short circuit, Temperature Fault code and UPS status, Battery Remining time				
<b>AUDIBLE ALARM</b>	Two tones with reset for silence	Main failure, Over/under voltage, Overload, Low battery, Over temperature and Fault				
<b>FEATURES</b>	DC / AC start without battery	Yes with Cold Start Function				
<b>INPUT / OUTPUT OUTLET</b>	Main Input	Terminal Blocks with Main Input Circuit Breaker				
	Bypass Input	No (Optional)			Circuit Breaker	
	Battery Outlet	Terminal Blocks with Main Input Circuit Breaker				
	UPS Output	Terminal Blocks with Output Circuit Breaker				
<b>COMMUNICATIONS &amp; INTERFACE</b>	RS232 port	Serial interface port can be connected to PC, workstations				
	UPS Monitoring Software	UPSilon2000 Software in OS Windows, Novell and Unix				
	Remote status interface	Optional : Dry contact & Remote Status				
	SNMP / HTTP capability	Optional : Internal SNMP Card				
<b>ACOUSTIC NOISE</b>	At 1 meter	< 55dB				
	Altitude	<1000m				
<b>ENVIRONMENT</b>	Temperature	0°C to 45°C				
	Humidity %RH	0-95% (non-condensing)				
<b>PHYSICAL DIMENSIONS (WxDxH) (mm.)</b>	UPS include standard battery	260x560x710	370x655x905	455x830x1055	455x830x1055	515x830x1135
	Battery extension unit (option)	Separate (UPS and battery extension unit)				
<b>WEIGHT (Approximate in kg.)</b>	UPS include standard battery	80	190	195	210	310
	Battery extension unit (option)	Separate(UPS and battery extension unit)				
<b>CONFORMANCE</b>	Product Certification	TIS.1291 Part 1-2553, Part 2-2553, Part 3-2555:C1, CE : IEC62040-1,-2,-3, IEC61000, QMS : ISO9001 / 14001				

All above specifications may be changed without prior notice.

Chuphotic.BRO-44.UPS.SATURN TD31 10-40KL.Rev1.10/2019

บริษัท ซูไฟติก จำกัด

949 หมู่ 9 ต.ลำไทรเหนือ อ.เมืองสมุทรปราการ จ.สมุทรปราการ 10270

โทรศัพท์: 02 186 3010 แฟกซ์: 02 186 3018-9

www.chuphotic.com

E-mail: ups@chuphotic.com

ตัวแทนจำหน่าย :