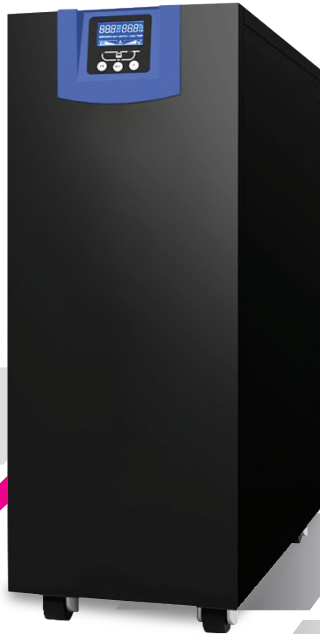


URANUS SMART Plus

True On-Line Double Conversion UPS
Low Frequency with Isolation Transformer



Applications

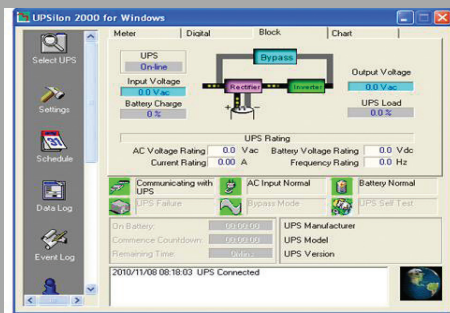
- Medical Equipment
- Hospital Equipment
- Banking & Financial
- Server, Data Center
- Telecommunication
- Transportation
- Automotive Industrial
- Heavy Industrial
- Assembly Production Line



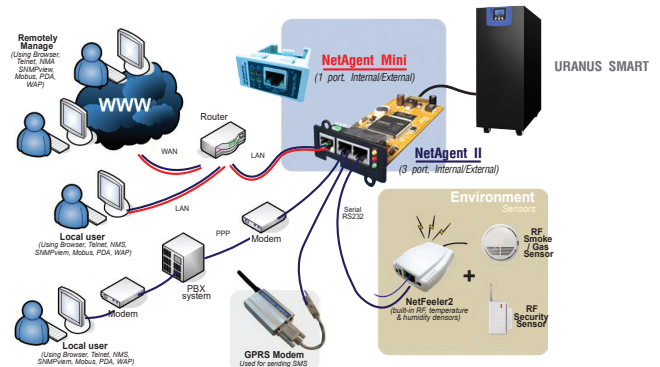
Features

- True Online Double Conversion UPS
- Microprocessor Control Width IGBT inverter design
- Sine Wave Pulse Width Modulation (PWM)
- Pure Sine Wave output less than 3%THDv
- Output Voltage 1Phase 220Vac \pm 1%
- Output Power Factor PF0.9
- Advance Battery Management (ABM)
- Battery Status & Remaining Time Function
- EPO : Emergency Power Off (Option)
- Built in Output Isolation Transformer
- Under / Over Voltage, Over Load, Short Circuit and Over Temperature Protection
- UPS with in Battery or External Battery Unit
- Maintenance Bypass 20kVA (Selector Switch & MCB)
- Parallel Redundant N+X 5-20kVA (Option)
- Soft Restart AC / DC By Cold Start Function
- EMI / RFI and Power Line Noise Protection
- LCD and LED Display with UPS Status
- Intelligent RS232 / RS485 Communication Port
- UPSilon2000 UPS Monitoring Software in OS Windows, Navell and Unix
- SNMP / HTTP CARD & Remote Monitoring AS400
- TIS 1291 Part 1-2553, Part 2-2553, Part 3-2555:C1
- CE : IEC62040-1,-2,-3, IEC55022, IEC61000
- ISO9001 / ISO14001 : 2015 Certified Manufacture

UPSilon 2000 UPS monitoring



SNMP / HTTP monitor capability (option)



มอก.1291
เล่ม 1-2553
เล่ม 2-2553
เล่ม 3-2555



URANUS SMART Plus

SPECIFICATION

Model	Standard UPS	SU1KTS	SU2KTS	SU3KTS	SU5KTS	SU6KTS	SU8KTS	SU10KTS	-	-	
	Long Backup	SU1KTL	SU2KTL	SU3KTL	SU5KTL	SU6KTL	SU8KTS	SU10KTL	SU15KTL	SU20KTL	
CAPACITY	Power in kVA / KW PF0.9	1 / 0.9	2 / 1.8	3 / 2.7	5 / 4.5	6 / 5.4	8 / 7.2	10 / 9	15 / 13.5	20/18	
INPUT	Voltage (single phase)	220/230/240Vac ±25% (100/110/120/200 option) L-N+PE									
	Frequency	50/60Hz ±10% (Auto selection)									
OUTPUT	Voltage (single phase)	220/230/240Vac ±1%, (100/110/120/200 option)									
	Frequency	50/60 Hz:±0.1% (Auto-select Default)									
	Wave Form	Pure Sine Wave									
	Total Harmonic Distortion (THDv)	<3% at Full Load (Linear load), <5% at Full Load (Non linear load)									
	Transient Condition	Less than 5% for 100% instantaneous load variation (Step Load)									
	Overload Capability	125% load for 2min, 150% for 30 sec, >150% for 0.5 sec then automatic transfer to bypass									
	Crest Factor Ratio	3:1									
	Protection	Over / Under voltage, Overload, Over Temp., Short Circuit, Battery Protection and Low Battery shutdown									
EFFICIENCY	Power Factor (PF)	PF 0.9									
	AC to AC (at full load, PF1.0)	>80% at Full Load							>87% at Full Load		
BATTERY	Bypass Mode	>96%									
	Type	SLA : Sealed Lead-Acid (maintenance free) Rechargeable Battery (optional : UL94-V0)									
	Capacity	16pcs x 12V7.5Ah				16pcs x 12V9.4Ah			External Battery Unit		
	Battery Voltage	192Vdc									
	Standard Backup Time (Full Load)	>34min	>18min	>11min	>4min	>4min	>3min	Depend Battery Unit			
	Continuous recharging time	3-6 hours to Cap.90% after Full Load Discharge									
SURGE PROTECTION	Batter Charger Current	Standard 1A / Long Backup 3A / 7A							Long Backup 3A / 7A		
	Standard Surge SPD	UL recognized surge protection to std.1449 Cat.A / IEC61643-11 : LPZ3									
TRANSFER TIME	Surge Energy Dissipation	220joules 300Vac (510 joules option) at 10/1000µsec (Imax = 8000A Vclamp 775V)									
	Mains Fail or Recover Restart	Zero Transfer (0 ms.)									
	UPS to Bypass and Vice versa	Zero time (Make before break) (option)									
MANUAL CONTROLS	Auto Reverse	After Overload return to normal									
	Maintenance Bypass switch	Change Over Switch							MCB : Circuit Breaker		
INDICATOR	Front Panel LED's	Line, Inverter, Bypass and Battery									
	Front Panel LCD	Input voltage, Output voltage, Frequency, Battery voltage, % watt, %VA, Load level, Over load, Bypass, Line, Short circuit, Temperature Fault code and UPS status, Battery Remaining time									
AUDIBLE ALARM	Two Tones with reset for silence	Main Failure, Over / under Voltage, Overload, Low Battery, Over Temperature and Fault									
FEATURES	AC / DC start	Yes with Cold Start Function									
INPUT/OUTPUT OUTLET	Main Input	Terminal Blocks with MCB									
	Bypass Input	No(optional)				MCB : Circuit Breaker					
	Battery	Terminal Blocks with MCB									
	Type	4pcs x National with MCB				Terminal Blocks with MCB					
COMMUNICATIONS &	RS232 Port	Serial Interface Port can be connected to PC, workstations									
	UPS Monitoring Software	UPSilon2000 Software in OS Windows, Novell and Unix									
	Remote Status Interface	Optional : AS400 Dry contact & Remote Status									
	SNMP / HTTP capability	Optional : Internal SNMP Card with Netagent & Client Mate									
ACOUSTIC NOIS	At 1 meter	< 55dB									
	Altitude	<1000m									
ENVIRONMENT	Temperature	0°C to 40°C									
	Humidity	0-95% (non-condensing)									
PHYSICAL DIMENSIONS (WxDxH) (mm.)	UPS include standard battery	260x560x710			320x810x790			400x700x920			
	Battery extension unit (option)	Separate (UPS and Battery Unit)									
WEIGHT (Approximate in kg.)	UPS include standard battery	60	66	70	130	135	147	-	-		
	Battery extension unit (option)	Separate (UPS and Battery Unit)									
CONFORMANCE	Design regulation	TIS.1291 Part 1-2553, Part 2-2553, Part 3-2555 : C1, CE : IEC62040-1,-2,-3, IEC55022, IEC61000 By QMS ISO9001 / ISO14001									

Chuphotic.BRO-40.UPS.URANUS SMART Plus.Rev1.20/2019

บริษัท ซูไฟติก จำกัด

949 หมู่ 9 ต.ลำไทรเหนือ อ.เมืองสมุทรปราการ จ.สมุทรปราการ 10270

โทรศัพท์: 02 186 3010 แฟกซ์: 02 186 3018-9

www.chuphotic.com

E-mail: ups@chuphotic.com

ตัวแทนจำหน่าย :