

# VENUS ULTIMATE Plus Li

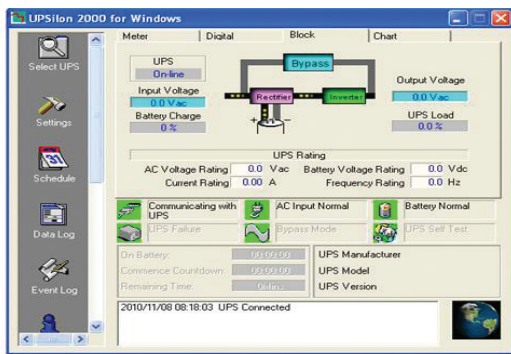
## VNU 1-10kVA



### DSP TRUE ONLINE DOUBLE CONVERSION UPS

#### Features

- True Online Double Conversion Pure Sine Wave UPS
- Advanced DSP digital controlled and IGBT technology
- High input Power Factor Correction (PFC>0.99)
- Output Pure Sine Wave less than 3% (THDv)
- Output voltage 220Vac +/-1% (200, 208, 220, 230, 240V)
- Wide Input Voltage Range 120-300Vac
- High Inverter Efficiency (approx.≥90%)
- Zero Transfer Time with Static Transfer Switch (SCR)
- Self Diagnosis at UPS start up or Manual Self Test
- Advanced Battery Management (ABM)
- Battery Capacity & Remaining Backup Time
- LiFePO4 High Energy Density in Low Maintenance Cost
- Extended 2-4Time Backup Time in Compact UPS
- 10Years Self Life & Cycle Life 3000Times @80% DOD
- EMI/RFI and Power line noise protection
- Surge, Lightning, Spike, Blackout, Brownout
- Overload and Short circuit Protection
- USB Port with UPSilon 2000 Monitoring
- External Battery Unit (Option: Battery charger)
- SNMP / HTTP Internet Network / AS400 (Option)
- Parallel Redundancy N+X 5-10kVA (Option)
- Maintenance Bypass switch 5-10kVA
- EPO: Emergency Power Off / ECO: Economy (Option)
- TIS 1291 Part 1-2553, Part 2-2553, Part 3-2555 : C1
- CE : IEC62040-1, -2, -3, IEC55022, IEC61000
- ISO9001 / ISO14001 : 2015 Certified Manufacturer

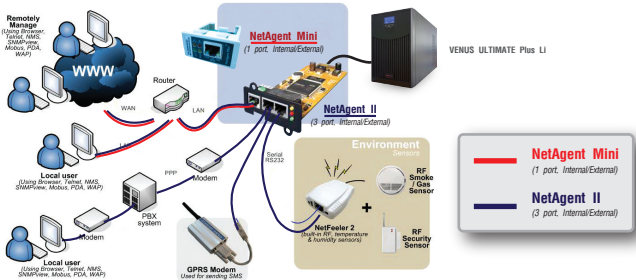


**UPSilon 2000 UPS Monitoring software**

#### LCD DISPLAY REAL TIME STATUS



1. LCD Display
2. On-Line Mode
3. Battery Mode
4. Output
5. Bypass Mode
6. Function Switch
7. ON/OFF Switch



**SNMP/HTTP Internet Network capability (option)**

Chuphotic UPS have range from 500VA to 1000KVA is also widely used to protect electronic equipments such as computer, server, networks, PABX, CCTV, telecommunications, medical, scientific equipment and industrial, etc. from blackout, browout, surge, spike, harmonic, noise and frequency drift.



พจน.1291  
 เล่ม 1-2553  
 เล่ม 2-2553  
 เล่ม 3-2555



www.chuphotic.com

# VENUS ULTIMATE Plus Li

## DSP TRUE ONLINE DOUBLE CONVERSION UPS

### SPECIFICATION

Model	Standard UPS	VNU2000P Li	VNU3000P Li	VNU5K Li	VNU6K Li	VNU10K Li
<b>CAPACITY PF=0.9</b>	For Computer Load (VA/W)	<b>2000/1800</b>	<b>3000/2700</b>	<b>5000/4500</b>	<b>6000/5400</b>	<b>10000/8000</b>
<b>SYSTEM</b>	Controller	Intelligent UPS with DSP controlled		Intelligent UPS with DSP control 3level IGBT Technology		
	Technology	High Frequency Double Conversion Pure sine wave UPS, Power Factor Correction(PFC) with IGBT Technology				
<b>INPUT</b>	Voltage	220Vac : 200/208/220/230/240Vac Single Phase				
	Voltage Range	110-290Vac at Half Load, 160-290Vac at Full Load		120-286Vac at Half Load, 160-286Vac at Full Load		
	Frequency	50/60 Hz $\pm 6\%$ (Auto Detect) at nominal voltage ( $\pm 10\%$ option)				
	Power Factor	PF >0.99 at Full Load, THDi <5%				
<b>OUTPUT</b>	Voltage	220Vac $\pm 1\%$ / (200, 208, 230, 240 selecting on LCD panel and software)				
	Phase	Single Phase L-N+PE				
	Frequency	Normally locked to line frequency, Free Running 50Hz $\pm 0.1\%$ / (60Hz selecting on LCD panel and software)				
	Wave Form	Pure Sine Wave				
	Harmonic Distortion	THDv <3% at Linear Load / <5% at Non Linear Load				
	Transient Condition	$\pm 5\%$ for 100% Instantaneous Load Variation (Step Load)				
	Overload Capability	120% for 60 sec., 150% for 30 sec., >150% for 300ms Then Automatic Switch to Bypass		120% for 2min., 150% for 30sec., >150% for 1sec. Then Automatic Switch to Bypass		
	Crest Factor	3 : 1				
<b>EFFICIENCY</b>	DC to AC	Approximate $\geq 87\%$		Approximate $\geq 92\%$		
	AC to AC	$\geq 87\%$ at Full Linear Load		$\geq 92\%$ at Full Linear Load		
<b>Lithium Battery High Energy Density in Compact UPS</b>	Type	LiFeP04 : Lithium Iron Phosphate Type : UPS 2C				
	Capacity at Eff.98%	LFP 7620(1536wh)		LFP19220(3840wh) / LFP19240(7680wh)		
	Voltage	76.8Vdc(60-90V)		192Vdc(150-220V)		
	Standard Backup Time	30-120min. (Depend on Load)				
	Battery Life	10Years Self Life and Cycle Life 3000Times @80%DOD				
	Charger/Charging Time	4A / 8A Charging : 6-8hours to 90% after Load Backup				
	STANDARD	CE : IEC60950 / IEC62619 / IEC62620 Transport : UN 38.3 / IEC62133				
<b>TRANSFER TIME</b>	Main fail or Recover UPS to by pass and vice versa	Zero Transfer Time with Static Transfer Switch (ATS-SCR)				
<b>INDICATOR</b>	Front Panel LED	Line, Inverter, Bypass and Battery (Mimic)				
	Front Panel LCD	Operate UPS Status, Input Voltage, Output Voltage, Frequency, Bypass, Battery Voltage, % Battery, Remaining Backup Time, % Load, VA, Watt, Temperature, Fan and UPS Fault				
<b>PROTECTION</b>	EMI/RFI Attenuation	>40dB				
	Surge Protection	Indoor: UL1449 Cat A, B / IEC 61643 LPZ 3, 2 In 3kA at 8/20 $\mu$ sec				
	Surge Energy Dissipation	SPD 300Vac : 220 Joules in 2msec at Power 30kW Imax 6kA				
<b>AUDIBLE ALARM</b>	Multiple Tones with Reset for Silence	Mains Failure, Low Battery, Overload and UPS Fault				
<b>INPUT PLUG</b>	Power Cord 1.5 meter	NEMA 5-15P / IEC320 C13		Terminal		
<b>OUTPUT OUTLET</b>	Tower	6xNational		Terminal		
<b>COMUNICATION INTERFACE</b>	USB Port	USB Port can be connected to PC, workstation or servers for automatic unattended shutdown / RS485 / AS400 Dry Contact (option)				
	Software	UPSilon2000 supported for windows 95, 98, NT, 2000, Me, XP, Novell Netware, Linux, FreeBSD (IBM, Sun, Solaris option)				
	SNMP/HTTP Slot	Option : SNMP CARD / AS400 Dry Contact / RS485 / NB IoT, 3G / 4G-IoT				
<b>ACOUSTIC NOISE</b>	At 1 meter	<45 dBA		<50 dBA		
<b>ENVIRONMENT</b>	Temperature	0-40°C				
	Humidity	RH 0-95% (Non-Condensing)				
<b>DIMENSIONS (WxDxH) mm</b>	UPS include Battery	210x560x330		260x560x720		
	Long Backup UPS	210x560x330		260x560x720		
	Battery Unit Extension (option)	Separate (UPS and Battery Unit extension)				
<b>WEIGHT (approximate in Kg.)</b>	UPS include Battery	25		55		87
	Long Backup UPS	13		25		27
	Battery Unit Extension (option)	Depending on Battery Capacity				
<b>CONFORMANCE</b>	Design Regulation	TIS.1291 Part1-2553 : Safety, TIS.1291 Part2-2553 : EMC, TIS.1291 Part3-2555 : Performance Cat. C1, CE : IEC / EN 62040-1, IEC / EN 62040-2, IEC / EN 62040-3, IEC / EN 50091-1,-2, IEC / EN 55022, IEC / EN 61000				

\*All above specification may be change without prior notice.

CHU-EN.BRO-66.UPS.VNU Plus Li 2-10K.Rev1.00/2021

#### บริษัท ชูไฟติก จำกัด

949 หมู่ 9 ต.ลำโพงเหนือ อ.เมืองสมุทรปราการ จ.สมุทรปราการ 10270

โทรศัพท์: 02 186 3010 แฟกซ์: 02 186 3018-9

www.chuphotic.com

E-mail: ups@chuphotic.com

ตัวแทนจำหน่าย :