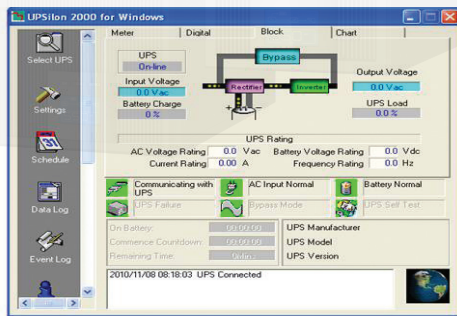
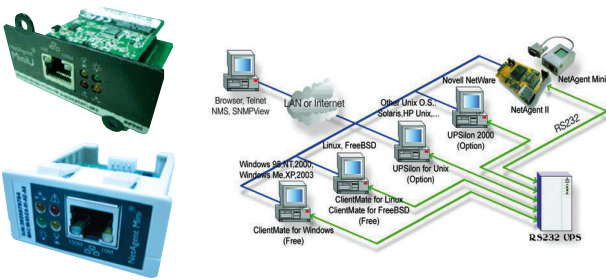


VENUS KR Plus 1000-1110 (1-10kVA)
 DSP TRUE ONLINE DOUBLE CONVERSION UPS



UPSilon 2000 UPS monitoring software



Internal SNMP Card

NetAgent connection Software

SNMP/HTTP monitor capability

Features

- True on-line Double Conversion UPS
- Advance Digital DSP control and IGBT Technology
- High Input Power Factor Correction PFC > 0.99
- Low Input Current THDi < 5%
- Pure Sine Wave output less than 2% THDv
- High Inverter Efficiency (Eff. ≥ 95%)
- Wide Input Voltage range 120-295Vac
- Zero Transfer Time
- Output Voltage 220V ± 1% at PF 0.9
- Self-Diagnosis at UPS start-up with LCD
- Advanced Battery Management (ABM)
- Surge, Spike, Blackout, Brownout, Overload and Short Circuit PQ Protection
- Parallel Redundant N+X, N+1 (Option : 5 - 10kVA)
- Economy mode (ECO) (Option : 5 - 10kVA)
- Emergency Power Off (EPO)
- Optional External Battery Unit
- Maintenance Bypass switch (Option : 5 - 10kVA)
- EMI/RFI and power line noise protection
- USB port with UPSilon2000 monitoring
- RS485 Modbus / Dry Contact port (Option)
- SNMP/HTTP monitor & Environment Set. (Option)
- TIS 1291 Part1-2553, Part2-2553, Part3-2555 : C1
- CE : IEC62040-1,-2,-3, IEC61000, UL E337869
- ISO9001 / ISO14001:2015 Certified Manufacture

Applications

- Server, Data Network
- Telecommunication
- Medical Equipment
- Transportation
- Banking & Financial
- Manufacturer
- Office Automation



Chuphotic UPS have range from 500VA to 1000KVA is also widely used to protect electronic equipments such as Computer, Server, Networks, PABX, CCTV, Telecommunications, Medical, Scientific Equipment and Industrial, etc. Power Quality From Blackout, Brownout, Surge, Spike, Harmonic, Noise and Frequency Drift, etc.



มอก.1291
 เล่ม 1-2553
 เล่ม 2-2553
 เล่ม 3-2555



www.chuphotic.com

VENUS KR Plus 1000-1110 (1-10kVA)

DSP TRUE ONLINE DOUBLE CONVERSION UPS

SPECIFICATIONS

| Model | Standard UPS | KR1000P | KR2000P | KR3000P | KR5000P | KR6000P | KR1110P |
|------------------------------------|---|---|-------------|-------------|---|-----------|------------|
| | Long Backup UPS | KR1000PL | KR2000PL | KR3000PL | KR5000PL | KR6000PL | KR1110PL |
| CAPACITY | For Computer Load (VA/W) | 1000/900 | 2000/1800 | 3000/2700 | 5000/4500 | 6000/5400 | 10000/8000 |
| SYSTEM | Controller | Intelligent UPS with DSP control | | | | | |
| | Technology | High Frequency Double Conversion Pure sine wave UPS, Power Factor Correction(PFC) with IGBT Technology | | | | | |
| INPUT | Voltage nominal | 220Vac Single phase (Selectable 208/220/230/240V) L-N+PE | | | | | |
| | Voltage range | 220Vac: -45% to +35% | | | 220Vac: -35% to +25% | | |
| | Frequency | 50/60Hz \pm 6% (Auto Detect) at nominal voltage (\pm 10% option) | | | | | |
| | Power Factor | PF>0.99 at Full Load | | | | | |
| | Input Harmonic current THDi | <5% | | | | | |
| OUTPUT | Voltage | 220V \pm 1% (Selectable 208/220/230/240V) | | | | | |
| | Phase | Single Phase | | | | | |
| | Frequency | Normally locked to line frequency, Free running 50Hz \pm 0.1% (Crystal control) | | | | | |
| | Wave Form | Pure sine wave | | | | | |
| | Harmonic Distortion THDv | <2% at Full Load(Linear Load), <5% at Full Load(Non-linear Load) | | | | | |
| | Transient condition | \pm 5% for 100% instantaneous load variation (Step Load) | | | | | |
| | Overload capability | 130% load for 60sec, 130% load for 30sec, >150% load for 300ms then automatic transfer to Bypass | | | 125% load for 10min, 150% load for 1min, >150% load for 1sec then automatic transfer to Bypass | | |
| | Crest Factor | 3 : 1 | | | | | |
| | Protection | Over / Under voltage, Overload, Short circuit, Over temperature and Battery low voltage shutdown | | | | | |
| EFFICIENCY | DC to AC | Approximate \geq 90% | | | Approximate \geq 92% | | |
| | AC to AC | Approximate \geq 94% | | | Approximate \geq 95% | | |
| BATTERY | Type | SLA : Seal Lead Acid Battery (maintenance-free) Rechargeable | | | | | |
| | Capacity | 2x12V 9.4Ah | 4x12V 9.4Ah | 6x12V 9.4Ah | 16x12V 9.4Ah | | |
| | Voltage | 24Vdc | 48Vdc | 72Vdc | 192Vdc | | |
| | Standard Backup Time | 15-30min (Depend On Computer Load) | | | | | |
| | Extend Backup Time | Optional with EXT. Battery Unit | | | | | |
| | Recharge time | 6-8 hours to 90% after load discharged | | | | | |
| | Charger Current(A) | Standard : 1A / Long Backup : 4A | | | Standard : 1A/Long Backup : 1-8A Adjustable | | |
| | Battery temperature compensation for recharge | Option | | | | | |
| TRANSFER TIME | Main fail or Recover UPS to bypass and vice versa | Zero time (True On-line UPS) | | | | | |
| INDICATOR | Front panel LED | Line, Inverter, Bypass, Battery, L-N input warning and Fault | | | | | |
| | Front panel LCD | Input voltage, Output voltage, Frequency, Battery voltage, % load, Temperature and UPS status | | | | | |
| PROTECTION | EMI / RFI Attenuation | >40 dB | | | | | |
| | Standard Surge Protection | IEC61643-11, -21 / UL recognized surge protection to std.1449 | | | | | |
| | Surge Energy Dissipation | 220Joules (510 Joules option) (2 microsec wave form) | | | | | |
| AUDIBLE ALARM | Multiple Tones with reset for silence | Mains Failure, Low battery, Overload and UPS fault | | | | | |
| UPS CONNECTION | Input | NEMA5-15P-IEC320-C13 (GS Option) | | | Terminal | | |
| | Output | 3xNational | 4xNational | | Terminal | | |
| COMMUNICATION INTERFACE | USB Port | USB port can be connected to PC, workstation or servers for automatic unattended shutdown./ RS485 Modbus / Dry Contact (option) | | | | | |
| | Software | UPSilon2000 supported for windows 95, 98, NT, 2000, Me, XP, Novell Netwave, Linux, FreeBSD (IBM, Sun, Solaris option) | | | | | |
| | SNMP/HTTP capability. | Option : SNMP CARD / USB / Environment Set for Netagent & Utility | | | | | |
| ACOUSTIC NOISE | At 1 meter | < 50 dBA | | | < 55 dBA | | |
| ENVIRONMENT | Temperature | 0-45°C | | | | | |
| | Humidity %Rh | 0-95% (Non-Condensing) | | | | | |
| DIMENSIONS (WxHxD) mm. | UPS include standard battery | 145x360x225 | 190x400x330 | | 230x500x553 | | |
| | Long Backup UPS | 145x360x225 | 190x400x330 | | 190x422x337 | | |
| | Battery Unit extension (option) | Depending on Battery Unit / Capacity | | | | | |
| WEIGHT (approximate in Kg.) | UPS include standard battery | 9.0 | 18.0 | 23.0 | 54 | 56 | |
| | Long Backup UPS | 4.5 | 8.5 | 9.2 | 11 | 12 | |
| | Battery Unit extension (option) | Depending on Battery Unit / Capacity | | | | | |
| CONFORMANCE | Product Certification | TIS.1291 Part 1-2553, Part 2-2553, Part 3-2555 : C1, CE : IEC62040-1,-2,-3 QMS By ISO9001 / ISO14001 : 2015 | | | | | |

All above specification may be change without prior notice.

Chuphotic.BRO-51.UPS VENUS KR Plus 1000-1110[1-10kVA].Rev1.10/2019

บริษัท ชูปัททิก จำกัด

949 หมู่ 9 ต.ลำไทรเหนือ อ.เมืองสมุทรปราการ จ.สมุทรปราการ 10270

โทรศัพท์: 02 186 3010 แฟกซ์: 02 186 3018-9

www.chuphotic.com

E-mail: ups@chuphotic.com

ตัวแทนจำหน่าย :