

VENUS Knight VNK xx RM

1-10kVA Tower / Rack Mount with Hot Swap Battery

Hot Swap



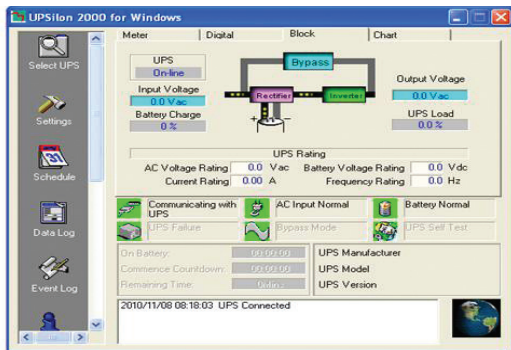
UPS Unit

Batt. Unit

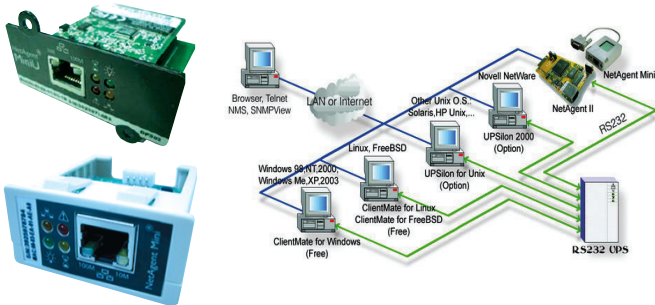
DSP TRUE ONLINE DOUBLE CONVERSION UPS

Features

- Advance Digital DSP control and IGBT technology
- High input Power Factor Control(PFC)>0.99
- Pure Sine Wave output less than 2%THDv
- High Inverter Efficiency (approx.≥95%)
- Wide Input Voltage / Frequency range 120 - 295Vac
- Zero Transfer Time
- Output Voltage 220V ±1% at PF0.9
- Self-Diagnosis at UPS start-up with LCD
- Advanced Battery Management (ABM)
- Rack / Tower with Hot Swap Battery
- Surge, Spike, Blackout, Brownout, Overload and Short Circuit for PQ Solution
- Economy mode(ECO) 5-10kVA
- Optional Rack Extension Battery for Long Backup
- Maintenance Bypass Switch(option : 5-10kVA)
- EMI/RFI and Power line Noise protection
- USB Serial Port with UPSilon2000
- SNMP / HTTP / RS485 / Dry Contact Card(Optional)
- TIS 1291 Part 1-2553, Part 2-2553, Part 3-2555:C1
CE:IEC62040-1,-2,-3, IEC61000, UL E337869
- ISO9001 / ISO14001 : 2015 Certified Manufacture



UPSilon 2000 UPS monitoring software



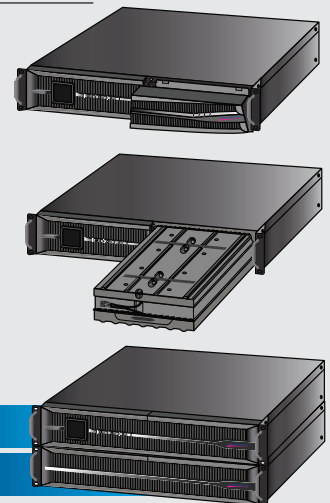
SNMP/HTTP monitor capability (option)

Chuphotic UPS have range from 500VA to 1000KVA is also widely used to protect electronic equipments such as computer, server, networks, PABX, CCTV, telecommunications, medical, scientific equipment and industrial, etc. Power Quality from Blackout, Brownout, Surge, Spike, Harmonic, Noise and Frequency Drift etc.

Rack Mount



Hot Swap Battery



UPS Unit

Batt. Unit

VENUS Knight VNK xx RM

1-10kVA Tower / Rack Mount with Hot Swap Battery



SPECIFICATIONS

Model	Rack Mount (Standard UPS)	VNK1000RM	VNK2000RM	VNK3000RM	VNK5KRM	VNK6KRM	VNK10KRM
CAPACITY	For Computer Load (VA/W)	1000/900	2000/1800	3000/2700	5000/4500	6000/5400	10000/8000
SYSTEM	Controller Technology	Intelligent UPS with DSP control True Online Double Conversion, Power Factor Control(PFC) with IGBT Technology					
INPUT	Voltage	220 Vac Single phase (Selectable 208/220/230/240V) L-N+PE					
	Voltage range	220Vac: -45% to +35%			220Vac: -35% to +25%		
	Frequency	50/60 Hz ±6% (auto detect) at nominal voltage (±10% option)					
	Power Factor	PF >0.99 at full load (THDi<3%)					
OUTPUT	Voltage	220V ±1% (Selectable 208V/220V/230V/240V)					
	Phase	Single phase L-N+PE					
	Frequency	Normally locked to line frequency, Free running 50Hz ±0.1% (Crystal control)					
	Wave form	Pure Sine Wave					
	Harmonic Distortion THDv	<2% at Full Load(100% Linear Load), <5% at Full Load(100% Non linear Load)					
	Transient Condition	±5% for 100% instantaneous load variation (Step Load)					
	Overload Capability	130% for 60 sec., 150% for 30 sec., >150% for 300ms, automatic transfer to bypass			125% for 10min., 150% for 1 min., >150% for 1sec., automatic transfer to bypass		
	Crest Factor	3 : 1					
EFFICIENCY	DC to AC	Approximate ≥ 87%			Approximate ≥ 92%		
	AC to AC	Approximate ≥ 92%			Approximate ≥ 95%		
BATTERY	Type	AGM / SLA : Seal Lead Acid Battery (maintenance-free) Rechargeable					
	Capacity	3×12V 9.4 Ah	4×12V 9.4Ah	6×12V 9.4Ah	Battery Unit : 16×12V 9.4 Ah		
	Voltage	36Vdc	48Vdc	72Vdc	192Vdc		
	Standard Backup Time	15-30 min. (Depend on computer load)					
	Extend Backup Time	Optional with EXT.Battery Unit (RACK MOUNT)					
	Recharge time	6-8 hours to 90% after load discharged					
	Charger Current(A)	Standard:1A / Long back up: 4A			Standard:1A / Long back up: 1-8A Adjustable		
	Battery Temperature Compensation for recharge	Option					
TRANSFER TIME	Main fail or Recover UPS to by pass and vice versa	Zero Time (True Online UPS)					
INDICATOR	Front panel LED & LCD SWITCH	AC Input & Output Voltage, Frequency, Load Level, Battery Level Temperature					
		UPS STATUS : AC mode, Battery mode, Bypass mode and Fault with switch ON, OFF, Function					
PROTECTION	EMI/RFI Attenuation	>40 dB					
	Surge protection	UL recognized surge protection to std.1449 Cat.A / IEC61643-11, LPZ3					
	Surge energy dissipation	220 Joules at 10/1000µsec (510 Joules option) (Imax = 8000A, Vclamp 775V)					
AUDIBLE ALARM	Multiple tones with reset for silence	Mains Failure, Low battery, Overload and UPS Fault					
INPUT PLUG	Power cord 1.5 meter	NEMA 5-15P / IEC320-C12			Terminal		
OUTPUT OUTLET	Rack mount	4 - 6xNational (Terminal option)			Terminal		
COMMUNICATION INTERFACE	USB Port	USB serial port can be connected to PC, workstation or servers for automatic unattended shutdown / with EPO contact					
	Software	UPSilon2000 supported for windows 95, 98, NT, 2000, Me, XP, Novell Netware Linux, FreeBSD (IBM, Sun, Solaris option)					
	SNMP/HTTP capability.	Option SNMP CARD / USB / Environment set for Netagent & Utility					
ACOUSTIC NOISE	At 1 meter	< 50 dBA			< 55 dBA		
ENVIRONMENT	Temperature	0-45°C					
	Humidity	0-95 % (Non-Condensing)					
DIMENSIONS (W×H×D) mm.	Standard UPS Rack 19 inch	440×88×420 (2U)	440 × 88 × 570 (2U)		440 × 88 × 500 (2U)		
	Long backup UPS Rack 19 inch	440×88×420 (2U)	440 × 88 × 570 (2U)		440 × 88 × 500 (2U)		
	Battery Unit for UPS	-	440 × 88 × 570 (2U)		440 × 88 × 500 (2U)		
WEIGHT (approximate in Kg.)	Standard UPS	13	20	25	11	12.5	
	Long backup UPS	6	10	10	11	12.5	
	Battery Unit for UPS	-	14	19	44.5		
CONFORMANCE	Design regulation	TIS.1291 Part1-2553, Part2-2553, Part3-2555 : C1, CE : IEC 62040-1,-2,-3, IEC61000 / UL no. E337869 By QMS : ISO9001 / 14001 :2015					

All above specification may be change without prior notice.

Chuphotic.BRO-36.UPS VENUS Knight VNKxxRM.Rev1.00/2019

บริษัท ชูโฟติก จำกัด

949 หมู่ 9 ต.ลำไทรเหนือ อ.เมืองสมุทรปราการ จ.สมุทรปราการ 10270

โทรศัพท์: 02 186 3010 แฟกซ์: 02 186 3018-9

www.chuphotic.com

E-mail: ups@chuphotic.com

ตัวแทนจำหน่าย :