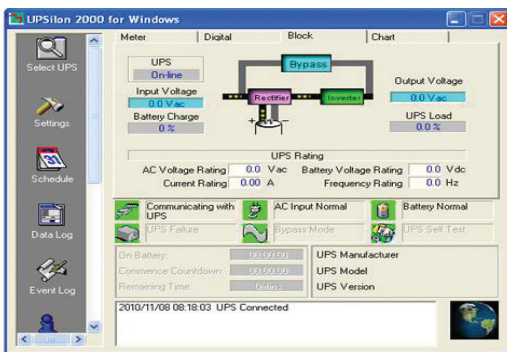


**VENUS ULTIMATE31 10-20kVA**  
**3/1 TRUE ON-LINE DOUBLE CONVERSION UPS**

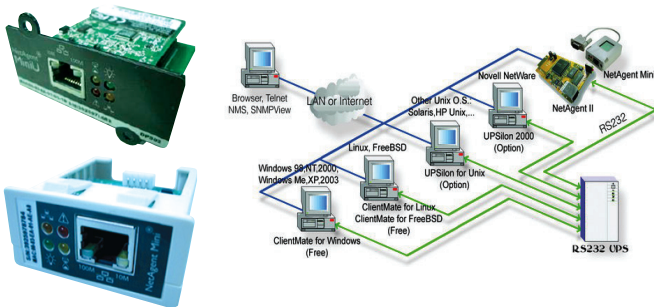


**Features**

- True on-line Double Conversion UPS
- Advance Digital DSP control and IGBT technology
- High input power factor control (PFC) > 0.99
- Pure sine wave output less than 3%THDv
- High inverter efficiency (approx.≥90%)
- 3 phase input / 1Phase Output voltage
- Zero transfer time (True Online UPS)
- Output Power Factor PF= 0.9
- Output voltage 220Vac ±1%
- Self-Diagnosis at UPS start-up
- Advanced Battery Management (ABM)
- LCD & LED Display with UPS Status
- Surge, spike, blackout, brownout, overload and short circuit protection
- Parallel redundant N+X, N+1(option)
- Soft Restart AC / DC By Cold Start Function
- Economy mode (ECO) 10-20kVA(option)
- Emergency Power Off (EPO)
- Optional Extension Battery Unit (VNB)
- Manual Bypass Switch / Changeover Switch
- EMI/RFI and power line noise protection
- USB Port with UPSilon2000 monitoring
- SNMP/HTTP Network monitor capability(option)
- TIS.1291 Part1-2553, Part2-2553, Part3-2555:C1
- CE:IEC62040-1,-2,-3, IEC55022, IEC61000
- ISO9001 / ISO14001:2015, certified manufacturer



**UPSilon 2000 UPS monitoring software**



**SNMP/HTTP Network monitor capability (option)**

Chuphotic UPS have range from 500VA to 1000KVA is also widely used to protect electronic equipments such as computer, server, networks, PABX, CCTV, telecommunications, medical, scientific equipment and industrial, etc. From Power Problem in blackout, brownout, surge, spike, harmonic, noise and frequency drift.



มอก.1291  
 เล่ม 1-2553  
 เล่ม 2-2553  
 เล่ม 3-2555



# VENUS ULTIMATE31

## 10-20kVA

### SPECIFICATIONS

Model		VNU3110R	VNU3115R	VNU3120R	VNU3110	VNU3115	VNU3120
UPS Type		UPS Rackmount 3U			UPS Tower		
CAPACITY	Power For computer load (kVA/kW)	10/8k	15/13.5	20/18	10/8	15/13.5	20/18
SYSTEM	Controller	Intelligent UPS with DSP control					
	Technology	High Frequency Double Conversion, Power Factor control(PFC) with IGBT Technology					
INPUT	Input wiring	3phase + N + PE					
	Voltage range	1 phase 220/230/240/ 3 phase 380/400/415 Vac ±25%					
	Frequency	50/60 Hz ±10%					
	Power factor	PF >0.99 at full load(THDi<7%)					
OUTPUT	Voltage	200/208/220/230/240 Vac ±1%					
	Phase	Single phase					
	Frequency	Normally locked to line frequency, Free running 50Hz ±0.1% (Crystal control)					
	Wave form	Pure Sine Wave					
	Total Harmonic Distortion THDv	<3% at full load (Linear load), <5% at full load (Non Linear load)					
	Transient condition	±5% for 100% instantaneous load variation (Step Load)					
	Overload capability	105% load infinite, 125% load for 10 mins, 150% load for 1 min, >150 load for 1sec, then automatic transfer to bypass					
	Crest Factor	3 : 1					
Protection	Over / Under voltage, Overload, Short circuit, Over temperature and Battery low voltage shutdown						
EFFICIENCY	AC to AC/ DC to AC	>90% at Full load (linear load)					
BATTERY	ECO Mode	>97% at Full load (linear load)					
	Type	SLA : Seal Lead Acid Battery (maintenance-free) Rechargeable					
	Capacity	20pcs x 12V 9.4Ah , optional : Extension Battery Unit					
	Voltage	240 V(20 pcs)					
	Standard backup time	>5 min at 8kW	>4 min at 13.5kW	>3 min at 18kW	>5 min at 8kW	>4 min at 13.5kW	>3 min at 18kW
	Extend backup time	Option					
	Recharge time	6-8 hours to 90% after load discharged					
	Charger current (Max)	3.5A / 7A					
	Battery temperature compensation for recharge	Option					
	TRANSFER TIME	Main fail or Recover UPS to by pass and vice versa	Zero time (True On-line UPS)				
INDICATOR	Front panel LED	Line, Inverter, Battery and Bypass					
	Front panel LCD(Dot Matrix)	Input voltage, Output voltage, Frequency, Battery voltage, % watt, %VA, Load level, Over load, Bypass, Line, Short circuit, Temperature, Fault code and UPS status					
PROTECTION	EMI/RFI attenuation	>40 dB					
	Surge protection	UL recognized surge protection to std.1449					
	Surge energy dissipation	660 Joules x3phase (510 Joules option)(2 microsec wave form)					
	Back Feed	Yes					
AUDIBLE ALARM	Multiple tones with reset for silence	Mains Failure, Low battery, Overload and UPS fault					
CONNECTION	Input	Terminal					
	Output	Terminal					
COMMUNICATION	USB connector	USB can be connected to PC and EPO, Dry contact(option)					
INTERFACE	Software	UPSilon2000 supported for windows 95, 98, NT, 2000, Me, XP, Family, Novell Netware, Mac Linux, FreeBSD (IBM, Sun solaris are option)					
	SNMP/HTTP capability.	SNMP CARD / AS400 / RS485 ModBus (Optional)					
ACOUSTIC NOISE	At 1 meter	≤50 dB(A)	≤60 dB(A)	≤50 dB(A)	≤60 dB(A)	≤60 dB(A)	
ENVIRONMENT	Temperature	0-45°C					
	Humidity	RH 0-95 % (Non-Condensing)					
DIMENSIONS (W×H×D) mm.	UPS	440 x 132 x 500(3U)			260x560x717		
	Battery Unit for UPS	440 x 130 x 500(3U) / special Backup time (call)			260 x 560 x 717 / special Backup time (call)		
WEIGHT (approximate in Kg.)	UPS	27	62	63	25	25	25
	Battery Unit for UPS	60	60x2 pcs	60x3 pcs	110	110	160
CONFORMANCE	Design regulation	TIS.1291 Part1-2553, Part2-2553, Part3-2555 : C1, CE : IEC62040-1,-2,-3, IEC55022, IEC61000					

All above specification may be change without prior notice.

Chuphotic.BRO-14.UPS.VENUS ULTIMATE31.Rev1.00/2019

บริษัท ชูฟอทิก จำกัด

949 หมู่ 9 ต.ลำโพงเหนือ อ.เมืองสมุทรปราการ จ.สมุทรปราการ 10270

โทรศัพท์: 02 186 3010 แฟกซ์: 02 186 3018-9

www.chuphotic.com

E-mail: ups@chuphotic.com

ตัวแทนจำหน่าย :