

# VENUS KR Rack Mount

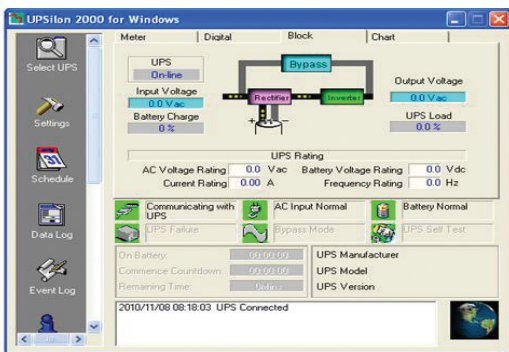
## 1-10kVA

## DSP TRUE ONLINE DOUBLE CONVERSION UPS

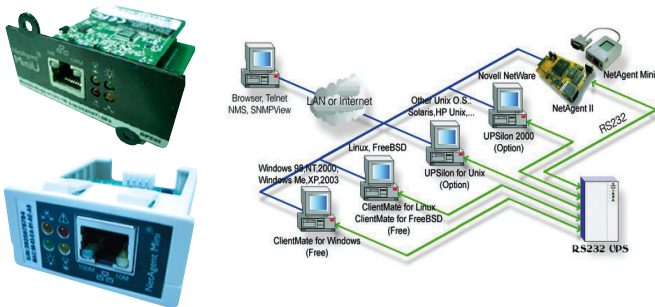


### Features

- True on-line Double Conversion UPS
- Advance digital DSP control and IGBT technology
- High input power factor control(PFC)
- Pure sine wave output less than 3%THD
- High inverter efficiency(approx.≥90%)
- Wide input voltage range
- Zero transfer time
- Output Power Factor 0.9
- Output voltage 220V ±1%
- Self-diagnosis at UPS start-up
- Advanced battery management (ABM)
- Surge, spike, blackout, brownout, overload and short circuit protection
- Economy mode(ECO) 5-10kVA
- Optional external battery bank
- Manual bypass switch(option)
- EMI/RFI and power line noise protection
- RS232/RS485/USB Communication with UPSilon2000 monitoring
- SNMP/HTTP / Dry Contact monitor capability(option)
- TIS.1291 Part1-2553, Part2-2553, Part3-2555 : C1
- CE : EN62040-1, -2, -3, EN55022, EN61000
- QMS : ISO9001, ISO14001 Certified Factory



**UPSilon 2000 UPS monitoring software**



**SNMP/HTTP monitor capability (option)**

Chuphotic UPS have range from 500VA to 1000KVA is also widely used to protect electronic equipments such as computer , server, networks, PABX, CCTV, telecommunications, medical, scientific equipment and industrial, etc. from blackout, brownout, surge, spike, harmonic, noise and frequency drift.



พ.ร.บ. 1291  
 โทร 1-2553  
 โทร 2-2553  
 โทร 3-2555



# VENUS KR Rack Mount

## 1-10kVA

### SPECIFICATIONS

Model	Rack mount (Standard UPS)	KR1000R	KR2000R	KR3000R	KR5000R	KR6000R	KR1110R
	Rack mount (Long backup UPS)	KR1000RL	KR2000RL	KR3000RL	KR5000RL	KR6000RL	KR1110RL
<b>CAPACITY</b>	For computer load	1000VA/900W	2000VA/1800W	3000VA/2700W	5000VA/4500W	6000VA/5400W	10000VA/8000W
<b>SYSTEM</b>	Controller	Intelligent UPS with DSP control					
	Technology	High Frequency Double Conversion, Power Factor control(PFC) with IGBT Technology					
<b>INPUT</b>	Voltage	100/220 Vac Single phase nominal voltage			220 Vac Single phase nominal voltage		
	Voltage range	100Vac:-20% to +35% , 220Vac: -45% to +35%			220Vac: -45% to +25%		
	Frequency	50/60 Hz ±6% (auto detect) at nominal voltage (±10% option)					
	Power factor	>0.99 at full load(THDi<5%)					
<b>OUTPUT</b>	Voltage	220V ±1%					
	Phase	Single phase					
	Frequency	Normally locked to line frequency, Free running 50Hz ±0.1% (Crystal control)					
	Wave form	Pure sine wave					
	Harmonic distortion	<3% at full load(100% linear load), <5% at full load(100% non linear load)					
	Transient condition	±5% for 100% instantaneous load variation					
	Overload capability	130% for 60 sec., 150% for 30 sec., >150% for 300ms, automatic transfer to bypass			125% for 10min., 150% for 1 min., >150% for 1sec., automatic transfer to bypass		
	Crest factor	3 : 1					
<b>PROTECTION</b>	Protection	Overload, Overvoltage, Under voltage, Short circuit, Over temperature and Battery low voltage shutdown					
	DC to AC	Approximate ≥ 85%			Approximate ≥ 90%		
<b>BATTERY</b>	AC to AC	Approximate ≥ 87%			Approximate ≥ 90%		
	Type	Seal Lead Acid (maintenance-free) Rechargeable					
	Capacity	3×12V 9.4 Ah	6×12V 9.6Ah	8×12V 9.6Ah	16×12V 9.4 Ah		
	Voltage	36Vdc	72Vdc	96Vdc	192Vdc		
	Standard backup time	15-30 min. (depend on computer load)					
	Extend backup time	Option					
	Recharge time	6-8 hours to 90% after load discharged					
	Charger Current(A)	Standard/Long back up: 1/4			Standard/Long back up: 1/3		
	Battery temperature compensation for recharge	Option					
	<b>TRANSFER TIME</b>	Main fail or Recover UPS to by pass and vice versa	Zero time (True On-line UPS)				
<b>INDICATOR</b>	Front panel LED	Line, Inverter, Bypass, Battery, L-N input warning and Fault					
	Front panel LCD	Input voltage, Output voltage, Frequency, Battery voltage, % load, Temperature and UPS status					
<b>PROTECTION</b>	EMI/RFI attenuation	>40 dB					
	Surge protection	UL recognized surge protection to std.1449					
	Surge energy dissipation	220 Joules (510 Joules option)(2 microsec wave form)					
<b>AUDIBLE ALARM</b>	Multiple tones with reset for silence	Mains Failure, Low battery, Overload and UPS fault					
<b>INPUT PLUG</b>	Power cord 1.5 meter	NEMA 5-15P (IEC 320, GS option)			Terminal		
<b>OUTPUT OUTLET</b>	Rack mount	4xNational (Terminal option)			Terminal		
<b>COMMUNICATION INTERFACE</b>	DB-9 connector	RS-232 serial port can be connected to PC, workstation or servers for automatic unattended shutdown./ USB port and EPO(option)					
	Software	UPSilon2000 supported for windows 95, 98, NT, 2000, Me, XP, Novell Netware Linux, FreeBSD (IBM, Sun, Solaris option)					
	SNMP/HTTP capability.	Option					
<b>ACOUSTIC NOISE</b>	At 1 meter	< 45 dBA			< 50 dBA		
	Temperature	0-40°C					
<b>ENVIRONMENT</b>	Humidity	0-95 % (Non-Condensing)					
	Standard UPS Rack 19 inch	440×88×500 ( 2U )	440 × 88 × 500 ( 2U )		440 × 140 × 500 (3U)		
<b>DIMENSIONS (W×H×D) mm.</b>	Long backup UPS Rack 19 inch	440×88×500 ( 2U )	440 × 88 × 500 ( 2U )		440 × 140 × 500 (3U)		
	Battery Unit for UPS	-	440 × 88 × 500 ( 2U )		440 × 140 × 500 (3U)		
	Standard UPS	14 (Included battery)	10	11	18	19	
<b>WEIGHT (approximate in Kg.)</b>	Long backup UPS	7	12	13	18	19	
	Battery Unit for UPS	-	17	28	48		
	<b>CONFORMANCE</b>	Design regulation	TIS.1291 Part1-2553, Part2-2553, Part3-2555 : C1 / CE : EN62040-1, -2, -3, EN55022, EN61000				

All above specification may be change without prior notice.

Chuphotic.BRO-01.UPS Venus KR rack mount.Rev1.00/2019

#### บริษัท ชูโฟติก จำกัด

949 หมู่ 9 ต.ลำไทรเหนือ อ.เมืองสมุทรปราการ จ.สมุทรปราการ 10270

โทรศัพท์: 02 186 3010 แฟกซ์: 02 186 3018-9

www.chuphotic.com

E-mail: ups@chuphotic.com

ตัวแทนจำหน่าย :