

# VENUS Ultimate

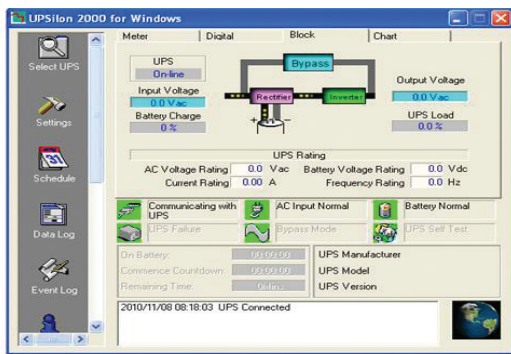
## VNU 1-10kVA

### DSP TRUE ONLINE DOUBLE CONVERSION UPS



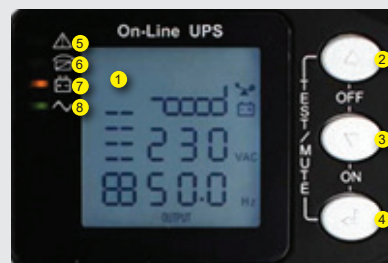
#### Features

- True Online Double Conversion Pure Sine Wave UPS
- Advanced Digital DSP controlled with IGBT technology
- High input Power Factor Correction (PFC)
- Output Pure Sine Wave less than 3% (THDv)
- Output Voltage 220Vac +/-1%
- Wide Input Voltage Range 120-280Vac
- High Inverter Efficiency (approx. ≥90%)
- Zero Transfer Time (True Online)
- Cold Start Soft Running
- Built in Static Transfer Switch (SCR)
- Self Diagnosis at UPS start up
- Advanced Battery Management (ABM)
- External Battery unit (Option)
- EMI/RFI and Power line noise protection
- Blackout, Brownout, Surge, Lightning, Spike, Harmonic Overload and Short circuit
- USB Port with UPSilon 2000 or WinPower monitoring
- SNMP/HTTP monitor capability / AS400 Dry Contact (Option)
- Parallel Redundancy N+X 5-10kVA (Option)
- Maintenance Bypass Switch 5-10kVA (Option)
- Economy mode(ECO), Emergency power off (EPO) (Option) 5-10kVA
- TIS 1291 Part 1-2553, Part 2-2553, Part 3-2555 : C1, CE : UL : IEC62040-1, -2, -3, IEC55022, IEC61000
- ISO9001, ISO14001 Certified Manufacturer

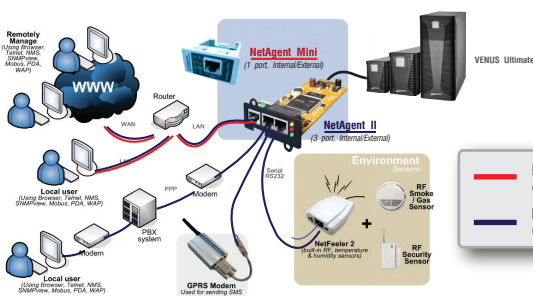


**UPSilon 2000 or WinPower UPS monitoring**

#### LCD DISPLAY REAL TIME STATUS



1. LCD Display
2. Enter Switch
3. OFF Switch
4. ON Switch
5. Fault
6. Bypass
7. Battery
8. Inverter



**SNMP/HTTP monitor capability (option)**

Chuphotic UPS Product range 500VA to 1000KVA have been wide useful to protect Electronic Equipment such as Computer, Server, Networks, PABX, CCTV, Telecommunications, Medical & Scientific Equipment and Industrial Machine from Power Quality Problem in Over / Under Voltage, Blackout, Surge, Spike, Harmonic, Noise and Frequency Drift.



มอก.1291  
 เล่ม 1-2553  
 เล่ม 2-2553  
 เล่ม 3-2555



# VENUS Ultimate

## DSP TRUE ONLINE DOUBLE CONVERSION UPS

### SPECIFICATION

Model s2.0	Standard UPS	VNU1000	VNU2000E	VNU2000	VNU3000	VNU5K/P	VNU6K/P	VNU10K/P
	Long backup UPS	VNU1000L	VNU2000EL	VNU2000L	VNU3000L	VNU5KL/P	VNU6KL/P	VNU10KL/P
<b>CAPACITY PF=0.9</b>	For Computer load	1000VA/900W	2000VA/1800W	2000VA/1800W	3000VA/2700W	5000VA/4500W	6000VA/5400W	10000VA/8000W
<b>SYSTEM</b>	Controller	Intelligent UPS with DSP controlled						
	Technology	High Frequency Online Double Conversion UPS with Power Factor Correction(PFC) IGBT Technology						
<b>INPUT</b>	Voltage	220Vac Single Phase nominal voltage (220/230/240Vac)						
	Voltage Range	220Vac: -40% to +35% 110-300				220Vac: -35% to +25% 120-276		
	Frequency	50/60 Hz ±10% (Auto detect) at nominal voltage (±10% option)						
	Power Factor	PF >0.99 at Full Load						
<b>OUTPUT</b>	Voltage	220Vac ±1% / (200/208/220/230/240 adjusted by key switch front panel and software)						
	Phase	Single Phase (L-N+PE)						
	Frequency	Normally locked to line frequency, Free running 50Hz ±0.1%/(60 Hz adjusted by switch front panel and software)						
	Wave Form	Pure Sine Wave						
	Harmonic Distortion	THDv <3% at Linear Load						
	Transient Condition	±5% for 100% instantaneous load variation (Step Load)						
	Overload Capability	120% for 60 sec., 150% for 30 sec., >150% for 300ms				120% for 2min., 150% for 30sec., >150% for 1sec.		
	Crest Factor	3 : 1						
<b>EFFICIENCY</b>	DC to AC	Approximate ≥ 85%				Approximate ≥ 90%		
	AC to AC	≥ 89% at Full Linear Load				≥ 93% at Full Linear Load		
<b>BATTERY</b>	Type	Seal Lead Acid (Maintenance-free) Rechargeable Battery						
	Capacity	3x12V7.5Ah	6x12V 7.5Ah	8x12V 7.5Ah	20x12V 7.5Ah	20x12V 9.4Ah		
	Voltage	36Vdc	72Vdc	96Vdc	240Vdc			
	Standard Backup Time	15-30 min. (Depend on Computer Load)						
	Extend Backup Time	Battery Unit Option						
	Recharge Time	6-8 hours to 90% after load discharged						
	Charger Current(A)	Standard 1A / Long Backup 6A				Standard 1A / Long Backup 10A(Adjust)		
<b>TRANSFER TIME</b>	Main fail or Recover UPS to by pass and vice versa	Zero Transfer Time, Static Transfer Switch (SCR)						
<b>INDICATOR</b>	Front Panel LED	Line, Inverter, Bypass and Battery						
	Front Panel LCD	Operate status, Input voltage, Output voltage, Frequency, Bypass, Battery voltage, % Battery, % Load, VA, Watt, Temperature and Fault, Remaining battery backup time						
<b>PROTECTION</b>	EMI/RFI Attenuation	>40 dB						
	Surge Protection	UL recognized surge protection to std.1449						
	Surge Energy Dissipation	220 Joules (510 Joules option)(2 microsec wave form)						
<b>AUDIBLE ALARM</b>	Multiple Tones with Reset for Silence	Mains Failure, Low battery, Overload and UPS fault						
<b>INPUT PLUG</b>	Power Cord 1.5 meter	NEMA 5-15P (IEC 320, GS option)				Terminal		
<b>OUTPUT OUTLET</b>	Universal Plug	3xNational	4xNational			Terminal		
<b>COMUNICATION INTERFACE</b>	USB	USB port can be connected to PC, workstation or servers for automatic unattended shutdown						
	Software	UPSilon2000 or WinPower for windows Me, XP, 7, 8, 10, Novell Netware, Linux, FreeBSD (IBM, Sun, Solaris option)						
	optional	SNMP Card(Network), AS400 Card(Relay Dry Contact) Parallel Card						
<b>ACOUSTIC NOISE</b>	At 1 meter	< 45 dBA				< 50 dBA		
<b>ENVIRONMENT</b>	Temperature	0-40°C						
	Humidity	0-95 % (Non-Condensing)						
<b>DIMENSIONS (WxHxD) mm</b>	UPS include standard battery	145x220x400	191x336x470			250x616x502		
	Long backup UPS	145x220x400	191x336x470			250x616x502		
	Battery Unit extension (option)	Separate (UPS and battery extension rack)						
<b>WEIGHT (approximate in Kg.)</b>	UPS include standard battery	13	25	29	30	62	64	
	Long Backup UPS	6.0	11	12	12	18	20	
	Battery Extension Unit (option)	Depending on battery capacity						
<b>CONFORMANCE</b>	Design regulation	TIS.1291 Part1-2553, Part2-2553, Part3-2555 : C1, CE : IEC 62040-1, -2, -3, IEC 55022, IEC 61000				TIS.1291 Part1-2553, Part2-2553, Part3-2555 : C1, CE : IEC 62040-1, -2, -3, IEC 55022, IEC 61000		

\*All above specification may be change without prior notice.

Chuphotic.BRO-56.VENUS Ultimate.Rev1.10/2020

บริษัท ชูไฟติก จำกัด

949 หมู่ 9 ต.ลำไทรเหนือ อ.เมืองสมุทรปราการ จ.สมุทรปราการ 10270

โทรศัพท์: 02 186 3010 แฟกซ์: 02 186 3018-9

www.chuphotic.com

E-mail: ups@chuphotic.com

ตัวแทนจำหน่าย :