

# VENUS ULTIMATE S2.0

## DSP TRUE ONLINE DOUBLE CONVERSION UPS



### Advance DSP Control Technology

The advance Digital DSP control technology enable UPS more stable performance and with battery quality.

### Active Input Power Factor Correction (PFC)

Digitalized control of the PFC enable the UPS to keep the Input power factor above 0.99 to prevent possible electric grid pollution and meanwhile mostly save the cost.

### Wide Input and Frequency Range

We intentionally widen the range of input factors to make sure the UPS can apply to various environment, which will Effectively sustain the battery charging even in unstable power environment so that the service life of the UPS could be obviously prolonged.

### Adaptive Load Management

This technology allows the UPS to be set up at a fixed 50Hz or 60Hz output while it also can intelligently monitor power usage and automatically sheds and reconnects loads in order to prevent generator overload.

### Support the Generator

The wide range of input voltage and frequency can effectively separate the harmful electric wave produces the generators and provide safe and reliable power supply.

### High-reliability Parallel Redundancy Technology

N+X parallel redundant technology means that there is a UPS unit providing protection for the key loads. When any one of the system was failure, the UPS could provide the high quality power to the key loads due to the additional one, which makes the system more reliable.

### APPLICATIONS

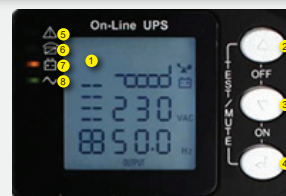


• Industrial Equipment • Postal & Telecommunications • Data Center & Server Room • Hospital, Medical Equipment • Large Internet Computer Room • Financial And Securities

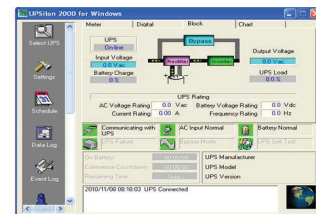
## Features

- True On-line Double Conversion UPS
- Advance Digital DSP Control with IGBT technology
- High input Power Factor Correction PFC >0.99
- Low Input Current Harmonic THDi ≤3%
- Output Pure Sine Wave THDv <1%
- Wide Input Voltage / Frequency Range (208-478Vac)
- Included Battery (10-30kVA) / Extension Battery Unit
- Output Power Factor PF0.9
- AC & DC Cold Start function
- Easy Interface LED & LCD Display with Function Switch
- Built in Static Transfer Switch (SCR)
- Advanced Battery Management (ABM)
- Intelligent Forced Wind (Fan speed control)
- Economy mode (ECO : option)
- Emergency Power Off (EPO : option)
- MCB for Main Input, Maintenance Bypass and Output
- Fully Protection Function
- USB communication port, with UPSilon2000 Monitoring
- SNMP/HTTP Capability / Dry Contact, Modbus (Option)
- Parallel Redundant N+X technology(option)
- TIS.1291 part 1 - 2553, part 2 - 2553, part 3 - 2555 : C3
- Certificate CE : IEC62040 - 1,2,3, IEC55022, IEC61000
- ISO9001:2015 / ISO14001:2015 Certified Manufacturer

### LED & LCD DISPLAY REAL TIME STATUS



1. LCD Display
2. Enter Switch
3. OFF Switch
4. ON Switch
5. Fault
6. Bypass
7. Battery
8. Inverter



UPSilon 2000 UPS monitoring software



มอก.1291  
 เล่ม 1-2553  
 เล่ม 2-2553  
 เล่ม 3-2555



www.chuphotic.com

# VENUS ULTIMATE S2.0

## DSP TRUE ONLINE DOUBLE CONVERSION UPS 4.2.1.1

### SPECIFICATIONS

4.2.1.1

Model	Standard UPS	VNU3310S	VNU3315S	VNU3320S	VNU3330S	-	-	-	-	-	-	
	Long Backup UPS	VNU3310L	VNU3315L	VNU3320L	VNU3330L	VNU3340L	VNU3350L	VNU3360L	VNU3380L	VNU33100L	VNU33120L	
Capacity	kVA/kW	10/9	15/13.5	20/18	30/27	40/36	50/45	60/54	80/72	100/90	120/104	
<b>TECHNOLOGY</b>												
Controller	4.2.1.2 DSP : Digital Signal Processing Controller											
Technology	True Online Double Conversion UPS with Power Factor Correction (PFC) IGBT Technology											
<b>INPUT</b>												
4.2.1.5 INPUT Parameter												
Phase	Three Phase - N + PE											
Voltage Range	220/380-35%+25% (380/400/415Vac Selectable) (Range 208-478Vac)											
Bypass Voltage	220/380±10% (380/400/415Vac Selectable)											
Frequency	50Hz±10% (45-55Hz) (RANGE 40-70Hz)											
Power Factor	4.2.1.1 PF ≥0.99 at 100% Load											
Input Current Distortion(THDi)	THDi ≤3%											
Soft Start capacity	Yes : AC / DC											
<b>OUTPUT</b>												
4.2.1.6 OUTPUT Parameter												
Phase	Three Phase - N + PE (Selectable)											
Voltage	220/380, 230/400, 240/415Vac ±0.5% (200Vac/208Vac option)											
Frequency	Synchronizing with AC input when its frequency are within 50Hz ±1% with phase shift less than 3 degree, 50Hz ±0.1% at battery mode											
Wave Form	Pure Sine Wave											
Output Power Factor	PF0.9											
Total Harmonic Distortion (THDv)	THDv <1% at Full Load (Linear Load), <2% at Full Load (Non-linear Load)											
Transfer Time	Zero Transfer Time (0 msec)											
Transient Recovery Time	90% for ≤60ms (Full RCD Load) : Step Load											
Overload Capability	125% load for 10 min, ≤150% load for 1 min, >150% for 300ms then automatic transfer to bypass											
Crest Factor	3:1											
Protection	Over/Under Voltage, Surge Inrush, EMC, Backout, Overload, Short Circuit, Over Temp., Battery Protection and Low Battery Shutdown											
Efficiency	AC to AC ≥96% / DC to AC ≥94%											
<b>PROTECTION</b>												
EMI/RFI Attenuation	< 40 dB											
Surge Protection	UL recognized surge protection to Std. UL1449 Cat.A / IEC61643-11, LPZ3											
Surge Energy Dissipation	3x220 joules at 10/1000µsec (Imax=8000A Vclamp 775V)											
Protection Degree	IP30											
Mode system	ECO and EPO Function(option)											
Cooling	Forced Wind (Fan speed automatically change on load varies)											
Maintenance Bypass	MCB for Main Input - Maintenance Bypass											
Parallel Redundancy	N+1 / N+X Parallel Redundancy up to 6 Unit											
<b>BATTERY</b>												
Type	4.2.2 AGM / Sealed Lead Acid Battery Maintenance free (SLA). ( UL-94 V0 option)											
Battery Voltage	±120Vdc with Ext.Terminal					±240Vdc with Ext.Terminal						
Number of Battery	9.4Ah x 20PCS	9.4Ah x 40PCS	9.4Ah x 60PCS	External : 40PCS Depended on Load								
Charger Standard/Long backup	1-10A Settable			1-15A Settable	1-20A Settable							
Charging Time	6-8 Hours to Cap. 90% after Load Discharge											
<b>INDICATOR&amp;COMMUNICATION</b>												
LED display	Utility Line Normal, Inverter, Bypass, Battery, UPS Fault											
LCD display in Graphic HMI	4.2.3.2 Voltage of Utility Line Normal, Inverter, Bypass, Battery, Load, Battery mode, Frequency, UPS Fault, Event Log 4.2.3.3											
Audible alarm	4.2.3.4 Utility Line Failure, Battery Mode, Low Battery, Overload, Fault											
Communication	4.2.1.7 USB Port : Upsilon2000, Dry Controt, RS485 Modbus (SNMP Slot Adapter Optional) 4.2.1.8											
Safety/EMC / Performance TIS / CE:	TIS1291 Part1-2553, Part2-2553, Part3-2553 : C3 / CE:IEC62040-1, IEC62040-2, IEC62040-3											
Manufacturer Std.	4.2.1.3 QMS : ISO9001:2015 / ISO14001:2015											
<b>ENVIRONMENT</b>												
Temperature	0-40°C (Operating) & -25-55 C ( Storage) 4.2.5											
Humidity	0-95 % (Non-Condensing)											
Audible Noise	≤65dB at 1 meter 4.2.4											
<b>PHYSICAL</b>												
Dimension (WxDxH) mm	250x830x870					360x830x870				450x850x1500		
Weight (kg)	Standard UPS	115	170	174	230	-	-	-	-	-	-	
	Long Backup UPS	57	63	64	71	73	118	118	122	150	160	

All specification are subject to change without prior notice.

Chuphotic.BRO-19.UPS VENUS ULTIMATE S2.0.Rev1.20/2020

### บริษัท ชูฟอทิก จำกัด

949 หมู่ 9 ต.ลำไทรเหนือ อ.เมืองสมุทรปราการ จ.สมุทรปราการ 10270

โทรศัพท์: 02 186 3010 แฟกซ์: 02 186 3018-9

www.chuphotic.com

E-mail: ups@chuphotic.com

ตัวแทนจำหน่าย :