

VENUS ULTIMATE33i

DSP TRUE ONLINE DOUBLE CONVERSION UPS



FEATURES

- True On-line Double Conversion UPS
- Advance Digital DSP control and IGBT Rectifier
- Low input current THDi<5% PF0.99
- Output pure sine wave THDv<3%
- Wide input voltage range (285-475Vac)
- Output Power Factor PF0.9
- DC cold start function
- Advanced Battery Management (ABM)
- Intelligent forced wind (fan speed control)
- Economy mode(ECO) (option)
- Emergency Power off (EPO) (option)
- Fully protection function
- USB communication port, with UPSilon2000 monitoring
- SNMP/HTTP monitor capability, DryContact, Modbus (optional)
- Parallel redundant N+X technology (optional)
- Intelligent battery monitoring system-MMBM (optional)
- TIS.1291 Part 1-2553, Part 2-2553, Part 3-2555 : C3
- Certificate of CE : IEC62040-1,-2,-3, IEC55022, IEC61000
- ISO9001:2015, ISO14001:2015 MFG Certification

APPLICATION



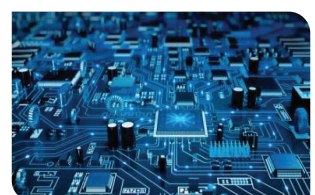
• Hospital, Medical Equipment



• Industrial equipment



• Internet Computer Room



• Network & Server ICT

Advance DSP Control Technology & IGBT Rectifier

The advance DSP digital control technology enable UPS more stable performance and with battery quality.

Wide Input and Frequency Range

We intentionally widen the range of input factors to make sure the UPS can apply to various environment, which will Effectively sustain the battery charging even in unstable power environmentso that the service life of the UPS could be obviously prolonged.

Adaptive Load Management

This technology allows the UPS to be set up at a fixed 50Hz or 60Hz output while it also can intelligently monitor power usage and automatically sheds and reconnects loads in order to preventgenerator ouverload.

Support Generator

The wide range of input voltage and frequency can effectively separate the harmful electric wave produces the generators andprovide safe and reliable power supply.

High-reliability Parallel Redundancy Technology

N+X parallel redundant technology means that there is a UPS unit providing protection for the key loads. When any one of the system was failure, the UPS could provide the high quality power to the key loads due to the additional one, which makethe system more reliable.

Advance Intelligent Battery Monitoring System

Intelligent battery monitoring system is specially designed for Battery's daily monitor and maintenance, compose of unit monitor and central monitor. The adoption of data control technology, RS485 interface and online monitor system realiaes the real time monitor, record the voltage, charge and discharge current, Temperature of every battery. Unique on line capacity analysis technology and alarm function assist the user find out the abnormal battery easily, hence to reduce the workload of battery Maintenance and improve the reliability of the system and the safety the testing. Battery monitor system gains the patent from the national patent bureau, the patent number is ZL01209813.2 option

USB Communication Interface & Software

UPSilon2000 Supported operation system;
 Novell Netware v3.1m v4.x
 Microsoft WindowXP, Windows2000, Windows2010
 Linux, IBM, Sun, Solaris are Server OS option

Remote Network : SNMP CARD, AS400, RS485 ModBus

SNMP Card Internet Network & Share NetAgent
 AS400 Dry Contact Remoted Monitoring
 RS485 ModBus Network UPS Monitoring



มอก.1291
 เล่ม 1-2553
 เล่ม 2-2553
 เล่ม 3-2555



www.chuphotic.com

VENUS ULTIMATE33i

DSP TRUE ONLINE DOUBLE CONVERSION UPS



Model	VNU3350i	VNU3360i	VNU3380i
Capacity kVA/kW	50kVA/45kW	60kVA/54kW	80kVA/72kW
TECHNOLOGY			
Controller	Digital DSP control		
Technology	True Online Double Conversion UPS with IGBT Rectifier Technology		
INPUT			
Phase	Three Phase-N+PE		
Voltage Range	220/380+/-25% (380,400,415 Selectable)		
Bypass Voltage	220/380+/-10%		
Frequency	50Hz ± 8%(46-54Hz)		
Power Factor	>0.99 at Full Load		
Input Current Distortion	THDi<5%		
Soft start capacity	Yes : AC & DC Soft Start		
OUTPUT			
Phase	Three phase-N+PE		
Voltage	220/380/, 230/400, 240/415 Vac ± 1% (200VAC/208VAC option)		
Frequency	Synchronizing with AC input when its frequency are within 50Hz ± 1% with phase shift less than 3 degree, 50Hz±0.1% at battery mode		
WAVE form	Pure Sine Wave		
Output Power Factor PF	0.9		
Total Harmonic Distortion THDv	<3% at full load (Linear load), <5% at full load (Non-Linear load)		
Transfer time	Zero transfer time(0ms)		
Transient recovery time	90% for <60ms (Full RCD Load)		
Overload Capability	125% load for 10 minutes, <150% load for 30 seconds, >150% for 300ms then automatic transfer to bypass		
Crest Factor	3:1		
Protection	Over/ Under voltage, Overload, Output short circuit, Over-temperature, Battery low voltage shutdown		
EFICIENCY			
AC to AC	>91%		
DC to AC	>90%		
PROTECTION			
EMI/RFI attenuation	<60dB(A)		
Surge protection	UL recognized surge protection to std. UL1449		
Surge energy dissipation	3X220 joules (510 joules option) at 8/20 usec wave form		
Protection degree	IP30		
Mode system	ECO and EPO Function (option)		
Cooling	Forced wind (Fan speed automatically change on load varies)		
Maintenance Bypass	(option)		
BATTERY			
TYPE	SLA : Sealed Lead Acid maintenance free (AGM), (ABS Container: UL-94 V0 option)		
Battery Voltage	480Vdc		
Number of Battery	40pcs		
Charger Standard	3.5A / 7A /10A		
Charging Time	Cap.90% after 6-8 hrs.		
INDICATOR&COMMUNICATION			
LCD display	Utility line normal, Inverter, Bypass, Battery, Load, Battery mode, Frequency, UPS fault		
Audible alarm	Utility line failure, Low battery, Overload, Fault		
Communication	USB Port (AS400, MODBUS and SNMP Card are option)		
STANDARD			
Safety/EMC	TIS.1291 Part 1-2553, Part 2-2553, Part 3-2555 : C3 / CE : IEC62040-1,-2,-3, IEC55022, IEC61000		
Manufacturer	Quality Management System : ISO9001:2015, ISO14001:2015		
ENVIRONMENT			
Temperature	0-40°C		
Humidity	RH 0-95% (non-condensing)		
Audible Noise	<60dB at 1 meter		
PHYSICAL			
Dimension(WxDxH)mm	515x840x1135		
Weight(kg)	150	160	180

• All specification are subject to change without prior notice.

Chuphotic.BRO-18.UPS.VENUS ULTIMATE33i.Rev1.00/2019

บริษัท ยูไฟติก จำกัด

949 หมู่ 9 ต.ลำไทรเหนือ อ.เมืองสมุทรปราการ จ.สมุทรปราการ 10270

โทรศัพท์: 02 186 3010 แฟกซ์: 02 186 3018-9

www.chuphotic.com

E-mail: ups@chuphotic.com

ตัวแทนจำหน่าย :