

VENUS ULTIMATE

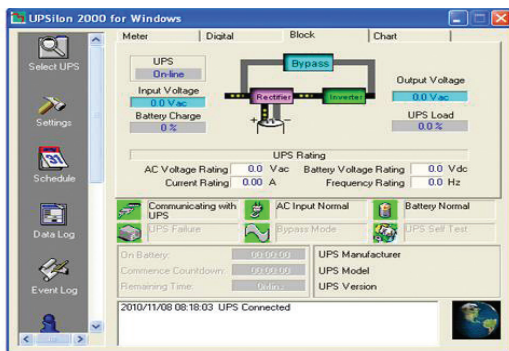
VNU 1-10kVA

DSP TRUE ONLINE DOUBLE CONVERSION UPS



Features

- True Online Double Conversion Pure Sine Wave UPS
- Advanced DSP digital controlled and IGBT technology
- High input Power Factor Correction (PFC)
- Output Pure Sine Wave less than 3% (THDv)
- Output voltage 220Vac +/-1%
- Wide Input Voltage Range 120 -300Vac
- High Inverter Efficiency (approx.≥90%)
- Zero Transfer Time
- Built in Static Transfer Switch (SCR)
- Self Diagnosis at UPS start up
- Advanced Battery Management (ABM)
- EMI/RFI and Power line noise protection
- Surge, Lightning, Spike, Blackout, Brownout , Overload and Short circuit
- USB Port with UPSilon 2000 monitoring
- External battery unit (Option)
- SNMP/HTTP monitor capability (Option)
- Parallel redundancy N+X 5-10kVA (Option)
- Maintenance Bypass switch 5-10kVA (Option)
- Economy mode (ECO), Emergency Power Off (EPO) (Option) 5-10kVA
- TIS 1291 Part 1-2553, Part 2-2553, Part 3-2555 : C1
- CE : IEC62040-1, -2, -3, IEC55022, IEC61000
- ISO9001 / ISO14001 : 2015 Certified Manufacturer

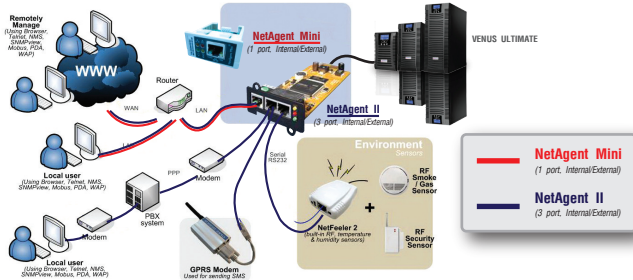


UPSilon 2000 UPS monitoring software

LCD DISPLAY REAL TIME STATUS



1. LCD Display
2. On-Line Mode
3. Battery Mode
4. Output
5. Bypass Mode
6. Function Switch
7. ON/OFF Switch



SNMP/HTTP monitor capability (option)

Chuphotic UPS have range from 500VA to 1000KVA is also widely used to protect electronic equipments such as computer , server, networks, PABX, CCTV, telecommunications, medical, scientific equipment and industrial, etc. from blackout, brownout, surge, spike, harmonic, noise and frequency drift.



มอก.1291
 เล่ม 1-2553
 เล่ม 2-2553
 เล่ม 3-2555



VENUS ULTIMATE

DSP TRUE ONLINE DOUBLE CONVERSION UPS

SPECIFICATION

Model	Standard UPS	VNU1000	VNU2000E	VNU2000	VNU3000	VNU5K	VNU6K	VNU10K
	Long backup UPS	VNU1000L	VNU2000EL	VNU2000L	VNU3000L	VNU5KL	VNU6KL	VNU10KL
CAPACITY PF=0.9	For Computer load (VA/W)	1000/900	2000/1800	2000/1800	3000/2700	5000/4500	6000/5400	10000/8000
SYSTEM	Controller	Intelligent UPS with DSP controlled						
	Technology	High Frequency Double Conversion Pure sine wave UPS, Power Factor Correction(PFC) with IGBT Technology						
INPUT	Voltage	220/230/240 Vac Single phase nominal voltage						
	Voltage Range	220Vac: -40% to +35% (120-300Vac)				220Vac: -25% to +25% (120-275Vac)		
	Frequency	50/60 Hz ±6% (Auto Detect) at nominal voltage (±10% option)						
	Power Factor	>0.99 at Full Load						
OUTPUT	Voltage	220Vac ±1% / (200, 208, 230, 240 adjusted by key switch front panel and software)						
	Phase	Single phase						
	Frequency	Normally locked to line frequency, Free running 50Hz ±0.1%/(60 Hz adjusted by switch front panel and software)						
	Wave Form	Pure Sine Wave						
	Harmonic Distortion	<3% of THDv at Linear Load						
	Transient Condition	±5% for 100% instantaneous load variation (Step Load)						
	Overload Capability	120% for 60 sec., 150% for 30 sec., >150% for 300ms				120% for 2min., 150% for 30sec., >150% for 1sec.		
	Crest Factor	3 : 1						
EFFICIENCY	DC to AC	Approximate ≥ 85%				Approximate ≥ 90%		
	AC to AC	≥ 87% at full linear load				≥ 90% at full linear load		
BATTERY	Type	Seal Lead Acid (maintenance-free) Rechargeable						
	Capacity	3x12V7.5Ah	6x12V 7.5Ah	8x12V 7.5Ah	20x12V 7.5Ah			
	Voltage	36Vdc	72Vdc	96Vdc	240Vdc			
	Standard Backup Time	15-30 min. (Depend on Load)						
	Extend Backup Time	Option						
	Recharge Time	6-8 hours to 90% after Load Backup						
	Charger Current(A)	Standard 1A / Long backup : 3.5A (7A option)				Standard 1A / Long backup : 3.5A (7A option)		
TRANSFER TIME	Main fail or Recover UPS to by pass and vice versa	Zero Transfer time , Static Transfer Switch (ATS-SCR)						
INDICATOR	Front Panel LED	Line, Inverter, Bypass and Battery						
	Front Panel LCD	Operate status, Input voltage, Output voltage, Frequency, Bypass, Battery voltage, % Battery, % Load, VA, Watt, Temperature and Fault						
PROTECTION	EMI/RFI Attenuation	>40 dB						
	Surge Protection	UL recognized surge protection to std.1449						
	Surge Energy Dissipation	220 Joules (510 Joules option)(2 microsec wave form)						
AUDIBLE ALARM	Multiple Tones with Reset for Silence	Mains Failure, Low battery, Overload and UPS Fault						
INPUT PLUG	Power Cord 1.5 meter	NEMA 5-15P (IEC 320, GS option)				Terminal		
OUTPUT OUTLET	Rack Mount	3xNational	4xNational			Terminal		
COMUNICATION INTERFACE	USB	USB port can be connected to PC, workstation or servers for automatic unattended shutdown						
	Software	UPSilon2000 supported for windows 95, 98, NT, 2000, Me, XP, Novell Netware, Linux, FreeBSD (IBM, Sun, Solaris option)						
	SNMP/HTTP Slost	Option : SNMP CARD / AS400 Dry Contact / RS485						
ACOUSTIC NOISE	At 1 meter	< 45 dBA				< 50 dBA		
ENVIRONMENT	Temperature	0-40°C						
	Humidity	0-95 % (Non-Condensing)						
DIMENSIONS (WxDxH) mm	UPS include standard battery	145x400x220	190x424x328			260x717x560		
	Long backup UPS	145x400x220	190x424x328			260x717x560		
	Battery Unit extension (option)	Separate (UPS and battery extension rack)						
WEIGHT (approximate in Kg.)	UPS include standard battery	13	20	25	29	69	70	
	Long Backup UPS	6.5	14	14	15	26	27	
	Battery Extension Unit (option)	Depending on battery capacity						
CONFORMANCE	Design regulation	TIS.1291 Part1-2553, Part2-2553, Part3-2555 : C1, CE : IEC62040-1, -2, -3, IEC55022, IEC61000				TIS.1291 Part1-2553, Part2-2553, Part3-2555 : C1, CE : IEC62040-1, -2, -3, IEC55022, IEC61000		

*All above specification may be change without prior notice.

Chuphotic.BRO-49.VENUS ULTIMATE.Rev1.10/2019

บริษัท ชูไฟติก จำกัด

949 หมู่ 9 ต.ลำไทรเหนือ อ.เมืองสมุทรปราการ จ.สมุทรปราการ 10270

โทรศัพท์: 02 186 3010 แฟกซ์: 02 186 3018-9

www.chuphotic.com

E-mail: ups@chuphotic.com

ตัวแทนจำหน่าย :