

CHUPHOTIC JUPITER KR33 Series

Performance Power Solutions

JUPITER KR33 From 250 kVA to 600 kVA



**3Phase True Online Double Conversion UPS
DSP IGBT Rectifier Technology**



www.chuphotic.com

949 หมู่ 9 ซ.แบร์ริง 58/8 ถ.สุขุมวิท 107 ต.สำโรงเหนือ อ.เมืองสมุทรปราการ จ.สมุทรปราการ 10270
โทร. +66 2186 3010 (อัตโนมัติ) แฟกซ์: +66 2186 30186-19 E-mail: ups@chuphotic.com





Jupiter KR33 series UPS is online high frequency UPS with output isolation transformer, featuring high performance, which is ideal for data center, medical facilities, industry, commercial facility and so on. Jupiter KR33 series UPS provides high quality power protection, reliable power guarantee for your loads. Customization are available for special requirement.



Application

- Industrial And Commercial tax affair
- Financial And Securities
- Industrial Equipment
- Medical & Health equipment
- Large Internet Computer Room
- Postal & Telecommunications
- Energy & Electricity
- Hospital, Medical lab
- Data Center & Server Room

Features and Advantages

High reliability

- Wide input voltage range -40% / $+20\%$ (50% in half load) allows the UPS to work in harsh electrical environments
- DC cold startup
- UPSs programmable sequential start-up reduces the impact on the generator
- Manual bypass maintenance design
- Allow 100% three phase unbalance load
- EPO function
- N+1 redundancy or hot-standby configuration increases system reliability
- Intelligent fan speed control and redundant fan design prevent UPS from overheating and increase system reliability
- PCB boards feature with anti-corrosion paint coating
- Roof radiation and front maintenance save installation space
- Self aging test function

High performance

- Online double conversion, high AC/AC efficiency up to 95% reduces energy loss and saves operating costs
- Low THDi: $< 3\%$ avoid pollution to the grid
- High input power factor up to 0.999 eliminate the need to oversize the genset to save capital investment
- High output power factor: 0.9(1.0 option)
- DSP and Full digital control technology
- Efficiency up to 99% in ECO mode, could transfer to inverter mode when the Grid is unstable.

Output isolation transformer (option)

- Electricity isolation make sure better safety
- High impact resistance capacity
- Strengthen short circuit protection
- High output power quality
- Reduce the neutral-earth voltage

Advanced communications

- RS232/485 & SNMP communication interface
- Configurable communication interface module
- Flexible Network Management
- Point-to-point monitoring
- Alerts users of a power event or pre-specified condition
- Automatically shut down your servers
- Remotely supervise and control UPS solutions

Added-value service

- UPS management software
- SNMP & MODBUS communication
- Customized design
- IP grade upgrade & temperature sensor
- Lightning protection device C/D level
- Charging temperature compensation
- Input/bypass isolation transformer (option)

Perfect display

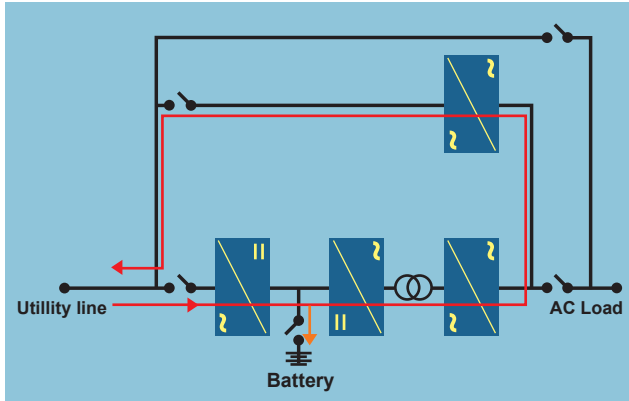
- 10 inch LCD touch display is on the front door, easy operation
- Manual switch, to ensure turn on or turn off once touch screen is failed
- Output voltage 380/400/415Vac, 50/60Hz, ECO mode all can be settable on the display panel.
- More than 10000 historical records.

Intelligent battery management

- Added-value service
- UPS management software
- SNMP & MODBUS communication
- Customized design
- IP grade upgrade & temperature sensor
- Lightning protection device C/D level
- Charging temperature compensation

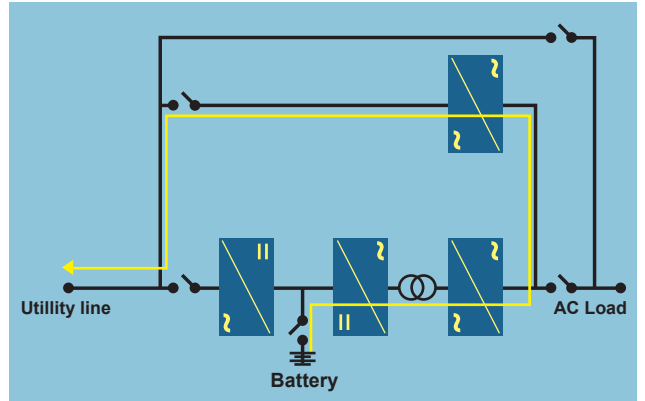
Smart UPS test function

- Utility test normal mode in saving function;
Utility supply to UPS and teed to output then recovery energy pass through static bypass to utility line for the recycle energy as **picture 1**



Picture 1: Utility test normal mode in saving function

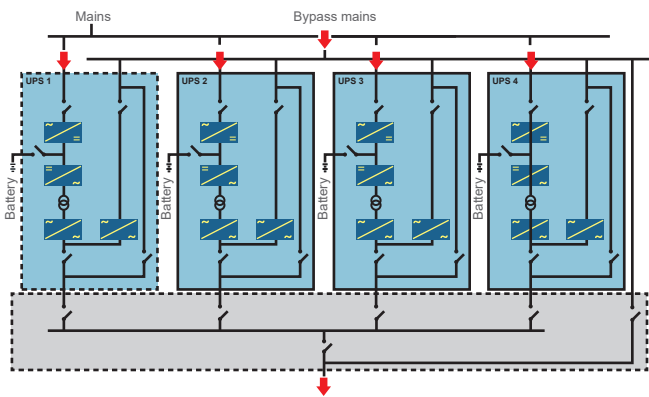
- Battery test backup mode in saving function;
Battery energy storage teed to inverter and pass through to static bypass to utility line for saving energy as **picture 2**



Picture 2: Battery test backup mode in saving function

Intelligent Parallel Redundancy N+X System

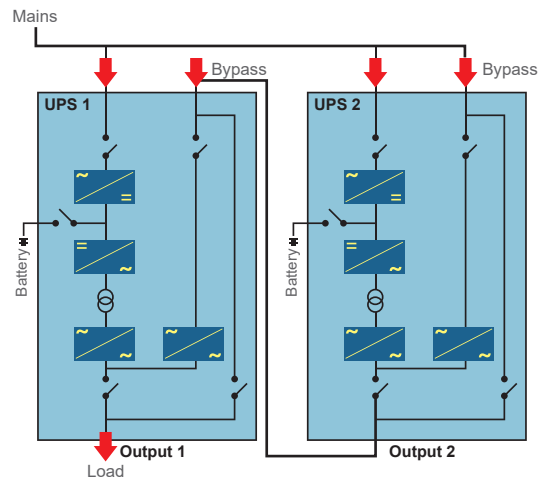
N+X with high parallel ability, can be freely parallel up to 8 pcs. Geminately improve the output power each parallel until independence, no host and subordinate requirement, each unit can be the main unit to make sure the parallel easily achieve



Hot Standby Parallel N+1 System

The When UPS-2 is fault or battery deep discharge, it will transfer to bypass, so the load will be powered by UPS-1 without interruption. Two UPS works independently. So the reliability for system will greatly improved.

The two UPS can be different and rated power. Simple connection, no additional communication line is needed. No additional parallel card is needed.

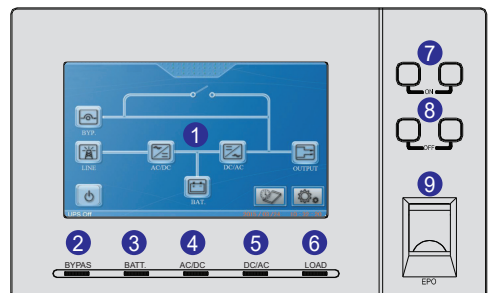


HMI Touch Screen Display

Touch screen provides a hommization operation interface for UPS. By touch screen, indicator light and user-friendly operation system, user can easily browse the input, output, load, and battery parameters of UPS to get the current status and warning information of UPS in time and to see functions and control UPS. Touch screen can also provide historical alarm log for user, provide a reliable basis for fault diagnosis.

Panel introduction

- | | | |
|--|-------------------------|----------------------------------|
| 1. Touch screen | 4. Rectifier indicator | 7. System On combination button |
| 2. Bypass indicator | 5. Inverter indicator | 8. System Off combination button |
| 3. Battery low-voltage alarm indicator | 6. Load alarm indicator | 9. EPO button |



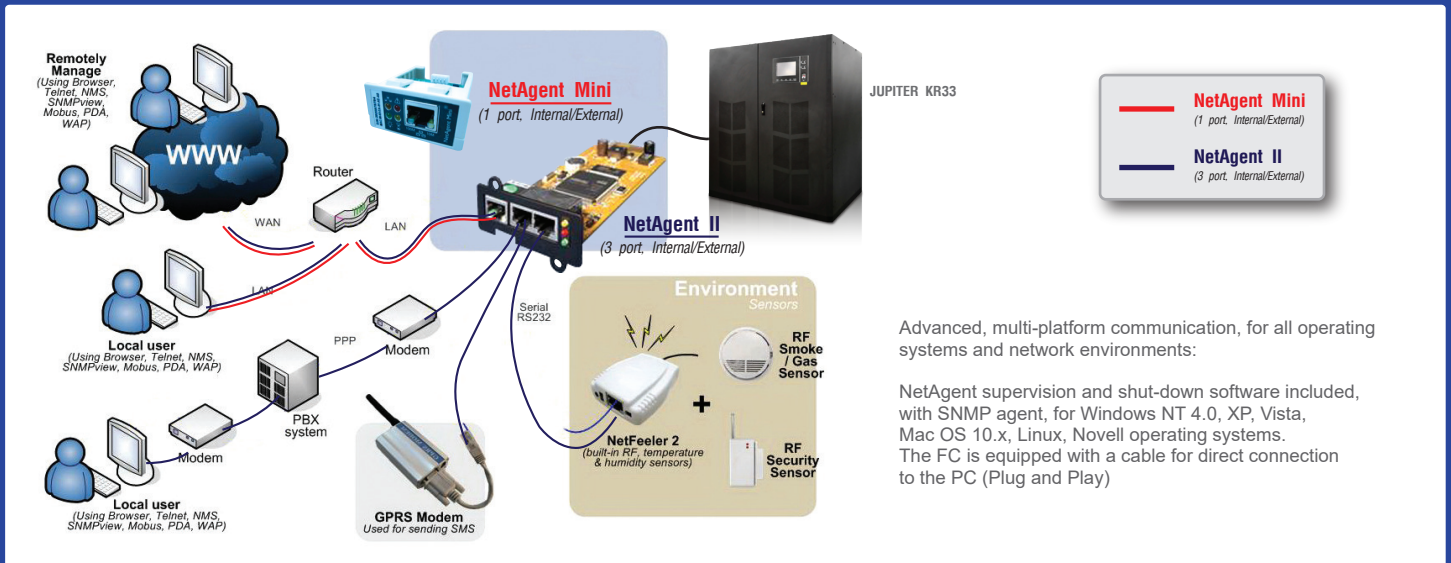
JUPITER KR33 Series Three phase in-Three phase out

Model	KR33250T	KR33300T	KR33400T	KR33500T	KR33600T
Power (kVA/kW)	250kVA/225kW	300kVA/270kW	400kVA/360kW	500kVA/450kW	600kVA/540kW
Technology	DSP True On-line Double Conversion with Isolated Transformer				
Input Power Factor (PF)	High Power Factor Corrector>0.999				
Rectifier Type	IGBT Rectifier THDi<3%				
INPUT SYSTEM					
Charger System	3 Phase 4 Wire+ PE (3 Phase 3 Wire+ PE Option)				
Voltage	L-N/L-L:220/380VAC +/-20% (115/200, 120/208, 230/400, 240/415+/-25% Option)				
Frequency	50/60 Hz +/-10%				
Soft start	0-100% 5sec				
BYPASS SYSTEM					
Phase	3 Phase 4 Wire+ PE (3 Phase 3 Wire+ PE Option)				
Voltage	L-N/L-L:220/380VAC (115/200, 120/208, 230/400, 240/415 Option)				
Transfer Time	0 ms				
CHARGER SYSTEM					
Charger Mode	Tri-state Charger (Buck, Boost, Float)				
Float Voltage	540-552 VDC				
Boost Voltage	568-580VDC				
Charge Current	40A Default(20-100A Setting)				
OUTPUT SYSTEM					
Phase	3 Phase 4 Wire+ PE (3 Phase 3 Wire+ PE Option)				
Voltage	L-N/L-L:220/380VAC +/-1% (115/200, 120/208, 230/400, 240/415 +/-1% Option)				
Frequency	50Hz/60Hz +/-0.1% (Battery Mode)				
Wave Form	Pure Sine Wave				
Unbalance load Voltage	2%,Compatible 100% Unbalance				
THDv	Linear load<1%; non-linear load<5%				
Efficiency AC/AC	>95%				
Efficiency ECO Mode	>98%				
Transfer Time	0 ms				
Power Factor (PF)	0.9 (1.0 option)				
Over Load	105%-130% load for 10 min, 131%-150% load for 10sec, >150% load for 10 ms				
BATTERY					
Battery Type	AGM/SLA Battery Maintenance-Free Lead Acid Battery				
Battery Capacity	External Battery				
Battery Voltage	480Vdc / 240 cells (32-42 pcs ,384 Vdc / 192 cells-504 Vdc / 252 cells Setting)				
Battery Self-testing	Automatically Alarm And Estimate Battery in Battery Abnormal Status				
PROTECTION SYSTEM					
Input Protection	Input Voltage/Frequency Over Limited, Wrong Phase, Lack Phase				
Output Protection	Over Current, Short Circuit, Output Over/under Voltage				
Battery Protection	Over Charge, Over-Discharge Protection				
Temperature Protection	Ambient Over-Temperature Protection, Inverter Over-Temperature Protection				
Maintenance Bypass	Yes				
Alarm	Overload, Abnormal AC Input, Low Battery, UPS Failure				
INDICATOR					
Display	Touch Screen / I Con				
LED	On, Off, Bypass, Battery, AC/AC, DC/AC, Load				
LCD	Bypass, Line, On/Off, AC/DC, Battery, DC/AC, Output, Parameters Setting, Information Records.				
COMMUNICATION					
Intelligent Pot	RS232/RS485, Parallel Card Interface, Dry Contact, (MODBUS and SNMP Adapter are Optional)				
ENVIRONMENT					
Audible Noise	<60dB				
Temperature	0 °C - 45 °C				
Humidity	0-95% (Condensing)				
DESIGN REGULATION					
Safety/EMC	CE/EN62040-1, EN62040-2, EN62040-3				
Manufacturer	ISO 9001:2015 TUV, ISO14001:2015				
Dimension (W x D x H)	1600x1000x1800		2000x1000x1800		2200x1000x1800
Weight(Kg.)	1300	1400	1700	2300	2400

* All specification subject to change without notice
 * Customer -made specifications are acceptable

Chuphotic.BRO-54.UPS Jupiter KR33.Rev1.00/2019

Communication and Power Management Solutions



Advanced, multi-platform communication, for all operating systems and network environments:

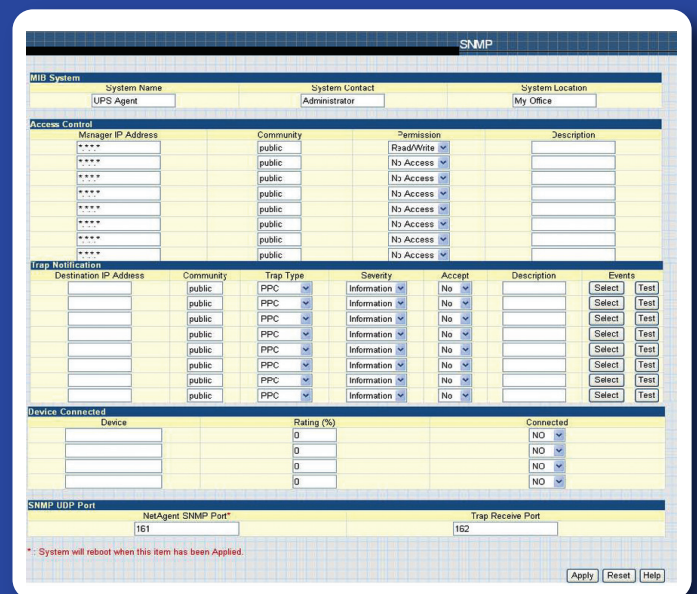
NetAgent supervision and shut-down software included, with SNMP agent, for Windows NT 4.0, XP, Vista, Mac OS 10.x, Linux, Novell operating systems. The FC is equipped with a cable for direct connection to the PC (Plug and Play)

ADVANCED COMMUNICATION

- Comprehensive UPS management with flexible configuration via Web Browser, NMS, Telnet or SNMP.
- Support advance encryption: HTTPS, SSL, SSH, SNMPv3
- Centralized authentication by Radius
- Event notification via E-mail, SMS or Trap
- Support NetFeeler II (environment monitoring) with temperature, humidity, water presence, smoke and door / window sensors
- Support USB Wifi 802.11b/g, USB flash disk / external USB HDD, compatible USB camera & more
- Support UPS MIB, RFC1628, PPC MIB
- Support GPRS modem
- Multi-language user interface
- Real-time UPS monitoring
- Schedule periodic UPS self-test
- Record event / data log
- Can also provide shut-down software for: IBM AIX; Free BSD; BSDI UNIX; BSD/OS; SCO Unixware; SCO Openserver; Sun Solaris; Compaq True64; HP UNIX; HP OpenVMS; HP Openview; SGI Irix MIPS; NCR UNIX
- Battery test log

SUPPORTED

- UPS Jupiter
- Installation & Commissioning
- Trainning
- Preventive Maintenance



SNMP UDP

This is to configure the UDP port of the NetAgent and trap receiver. SNMP default port is 161; and Trap MIB is UDP162

AS-400 Card

The AS400 communication card provides contact closures for remote monitoring your UPS. To meet different application requirement, the AS400 card is capable of selection the status of the dry-contact signal (active close or active open) by setting jumper. This suitable applications are listed below:

- IBM Server, Personal PC & Workstations equipments
- Auto-controlled industrial equipment & communication applications



CHUPHOTIC CO.,LTD.

949 Moo9,Sumrong-Nue, Muang Samutprakarn, Samutprakarn 10270 THAILAND
 Tel. : 02 186 3010 (Auto) Fax : 02 186 3018-19
 www.chuphotic.com
 E-mail: ups@chuphotic.com