

VENUS Ultimate31

VNU31 10-20KVA

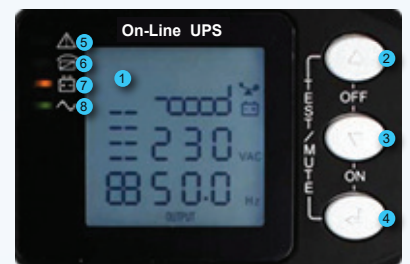


DSP TRUE ONLINE DOUBLE CONVERSION UPS

FEATURES

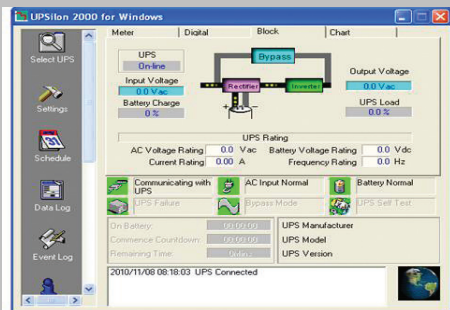
- True online Double Conversion UPS
- Advance Digital DSP control and IGBT technology
- Input Power Factor Correction (PFC) > 0.99
- Pure Sine Wave output < 3%THDv
- High Inverter Efficiency (approx.≥94%)
- 3 phase Input Voltage 380 Vac 50/60Hz
- Zero Transfer Time (True Online UPS)
- Output Power Factor PF0.9
- Output Voltage 220V ±1%
- EMI/RFI and power line Noise protection
- USB Port with UPSilon2000 UPS monitoring
- SNMP/HTTP capability / AS400 Card (option)
- Self-Diagnosis at UPS start-up
- Advanced Battery Management (ABM)
- Blackout, Brownout, Surge, Spike, Harmonic, Overload and Short Circuit protection
- Parallel Redundant N+X, N+1(option)
- Economy mode (ECO) 10-20kVA(option)
- Emergency Power Off (EPO)
- Extension Battery Unit (Option)
- Manual Bypass Switch
- TIS 1291 Part1-2553, Part2-2553, Part3-2555:C1
- CE : IEC62040-1,-2,-3, IEC55022, IEC61000
- ISO9001, ISO14001 Certified Manufacturer

LED & LCD DISPLAY STATUS

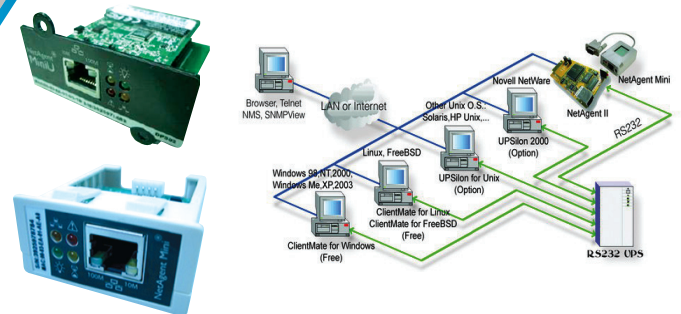


- | | |
|-----------------|-------------|
| 1. LCD Display | 5. Fault |
| 2. Enter Switch | 6. Bypass |
| 3. OFF Switch | 7. Battery |
| 4. ON Switch | 8. Inverter |

UPSilon 2000 or WinPower UPS monitoring



SNMP / HTTP monitor capability (option)



Chuphotic UPS Product range 500VA to 1000KVA have been wide useful to protect Electronic Equipment such as Computer, Server, Networks, PABX, CCTV, Telecommunications, Medical & Scientific Equipment and Industrial Machine from Power Quality Problem in Over / Under Voltage, Blackout, Surge, Spike, Harmonic, Noise and Frequency Drift.



มอก.1291
เล่ม 1-2553
เล่ม 2-2553
เล่ม 3-2555



VENUS Ultimate31

VNU31 10-20KVA

SPECIFICATIONS

Model S2.0		VNU3110	VNU3115	VNU3120	VNU3110R	VNU3115R	VNU3120R
UPS Type		UPS Tower			UPS Rackmount / Tower		
CAPACITY	For computer load PF 0.9 (kVA/kW)	10 / 9	15 / 13.5	20 / 18	10 / 9	15 / 13.5	20 / 18
SYSTEM	Controller	Intelligent UPS with DSP control					
	Technology	High Frequency Double Conversion, Power Factor control(PFC) with IGBT Technology					
INPUT	Input System	3 phase + N + PE					
	Voltage range	3 phase 380/400/415 Vac ±25%					
	Frequency	50/60 Hz ±10%					
	Power Factor	PF >0.99 at Full Load (THDi <5%)					
OUTPUT	Voltage	220Vac : 200/208/220/230/240 Vac ±1%					
	Phase	Single Phase (L-N+PE)					
	Frequency	Normally locked to line frequency, Free running 50Hz ±0.1Hz (Crystal control)					
	Wave Form	Pure Sine Wave					
	Harmonic Distortion	THDv <2% at Full Load (100% Linear Load), <5% at Full Load (100% Non Linear Load)					
	Transient condition	±5% for 100% instantaneous load variation (Step Load)					
	Overload capability	110% load infinite, 125% load for 10 mins, 150% load for 1 min, >150 load for 1sec, then automatic transfer to bypass					
	Crest Factor	3 : 1					
	Protection	Overvoltage, Undervoltage, Overload, Short circuit, Over temperature and Battery low voltage shutdown					
EFFICIENCY	AC to AC/ DC to AC	>94% at full load(linear load)					
	ECO Mode	>97% at full load(linear load)					
BATTERY	Type	Seal Lead Acid (Maintenance-free) Rechargeable Battery					
	Capacity	20pcs x 12V 9Ah , optional : Extension Battery Unit					
	Voltage	± 120Vac					
	Standard Backup time	>4 min at 9kW	>3 min at 13.5kW	>2 min at 18kW	>4 min at 9kW	>3 min at 13.5kW	>2 min at 18kW
	Extend Backup time	Battery Unit Option					
	Recharge Time	6-8 hours to 90% after load discharged					
	Charger Current (Max)	STD.1A / Long10A Adjustable					
	Battery temperature compensation for recharge	Option					
TRANSFER TIME	Main fail or Recover UPS to by pass and vice versa	Zero Time (True Online UPS)					
INDICATOR	Front panel LED	Line, Inverter, Battery and Bypass					
	Front panel LCD(Dot Matrix)	Input voltage, Output voltage, Frequency, Battery voltage, % watt, %VA, Load level, Over load, Bypass, Line, Short circuit, Temperature, Fault code and UPS status, Battery Remaining time					
PROTECTION	EMI/RFI attenuation	>40 dB					
	Surge protection	UL recognized surge protection to std.1449					
	Surge energy dissipation	660 Joules x3phase (510 Joules option)(2 microsec wave form)					
	Back Feed	Yes					
AUDIBLE ALARM	Multiple tones with reset for silence	Mains Failure, Low battery, Overload and UPS fault					
CONNECTION	Input	Terminal					
	Output	Terminal					
COMMUNICATION	DB-9/USB connector	USB Port can be connected to PC and EPO, Dry contact(option)					
INTERFACE	Software	UPSilon2000 or WinPower for windows Me, XP, 7, 8, 10, Novell Netware, Mac Linux, FreeBSD (IBM, Sun solaris are option)					
	Optional	SNMP Card (Network) / AS400 Card (Relay Dry Contact) / Parallel Card					
ACOUSTIC NOISE	At 1 meter	≤50 dB(A)	≤60 dB(A)	≤50 dB(A)	≤50 dB(A)	≤60 dB(A)	≤60 dB(A)
ENVIRONMENT	Temperature	0-40°C					
	Humidity	0-95 % (Non-Condensing)					
DIMENSIONS (W×H×D) mm.	UPS	250 x 502 x 616			443x131x580 (3U)		
	Battery Unit for UPS	250 x 502 x 616 / Special Battery Unit			443 x 131 x 580(3U) / Special Battery Unit		
WEIGHT (approximate in Kg.)	UPS	76	86	88	25	25	25
	Battery Unit for UPS	60	100	140	60	100	140
CONFORMANCE	Design regulation	TIS.1291 Part1-2553, Part2-2553, Part3-2555 : C1, CE:IEC62040-1,-2,-3, IEC55022, IEC61000					

All above specification may be change without prior notice.

Chuphotic.BRO-57.UPS.VENUS Ultimate31.Rev1.00/2020

บริษัท ชูฟอทิก จำกัด

949 หมู่ 9 ต.ลำไทรเหนือ อ.เมืองสมุทรปราการ จ.สมุทรปราการ 10270

โทรศัพท์: 02 186 3010 แฟกซ์: 02 186 3018-9

www.chuphotic.com

E-mail: ups@chuphotic.com

ตัวแทนจำหน่าย :