

VENUS Knight VNK xx RM Li

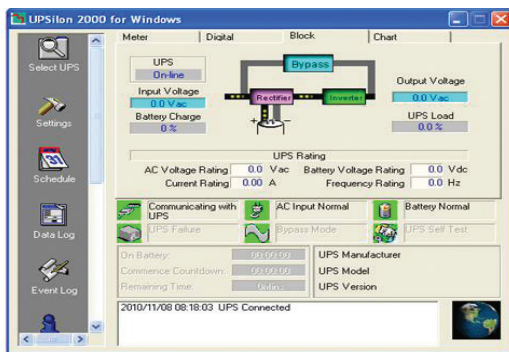
2-3kVA Lithium Battery

DSP TRUE ONLINE DOUBLE CONVERSION UPS

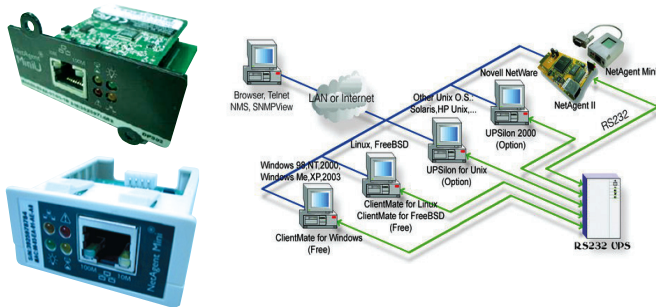


Features

- Advance Digital DSP control and IGBT Technology
- True on-line Double Conversion UPS
- Compact Rack Mount Easy to installation
- Rack Mount / Tower with Rotatable LCD Display
- High input Power Factor Correction (PFC)>0.99
- Pure Sine Wave output less than 2%THDv
- High Inverter Efficiency (Eff.≥95%)
- Wide Input Voltage Range 120 - 295Vac
- Zero Transfer Time
- Output Voltage 220Vac ±1% at PF0.9
- Self-Diagnosis at UPS start-up with LCD
- Advanced Battery Management (ABM)
- 3xLong Backup Time Li-ion DOD > 95%
- 10years Long Life Battery Lithium-ion 3000 Cycle
- Surge, Spike, Blackout, Brownout, Overload and Short Circuit for PQ Solution
- EMI/RFI and Power line Noise protection
- USB Port with UPSilon2000 monitoring
- SNMP/HTTP monitor & Environment Set. (option)
- TIS 1291 Part 1-2553, Part 2-2553, Part 3-2555:C1
- CE : IEC62040-1,-2,-3, IEC61000 / UL E337869
- ISO9001 / ISO14001 : 2015 Certified Manufacture



UPSilon 2000 UPS monitoring software



SNMP/HTTP monitor capability (option)

Applications

- Server, Data Network
- Telecommunication
- Medical Equipment
- Transportation
- Banking & Financial
- Manufacturer
- Office Automation



Chuphotic UPS have range from 500VA to 1000KVA is also widely used to protect electronic equipments such as Computer, Server, Networks, PABX, CCTV, Telecommunications, Medical, Scientific Equipment and Industrial, etc. Power Quality From Blackout, Brownout, Surge, Spike, Harmonic, Noise and Frequency Drift, etc.

VENUS Knight VNK xx RM Li

2-3kVA Lithium Battery



SPECIFICATIONS

Model	Rack Mount (Standard UPS)	VNK2000-RM Li	VNK2200-RM Li	VNK3000-RM Li
CAPACITY	For Computer Load	2000VA/1800W	2200VA/2000W	3000VA/2700W
SYSTEM	Controller	Intelligent UPS with DSP control		
	Technology	True Online Double Conversion, Power Factor Correction (PFC) with IGBT Technology		
INPUT	Voltage nominal	220 Vac Single phase (Selectable 208/220/230/240V) L-N+PE		
	Voltage range	220Vac: -45% to +35%		
	Frequency	50/60Hz ± 6% (Auto Detect) at nominal voltage (±10% option)		
	Power Factor	PF >0.99 at Full Load (THDi<3%)		
OUTPUT	Voltage	220V ±1% (Selectable 208/220/230 240V)		
	Phase	Single Phase L-N + PE		
	Frequency	Normally locked to line frequency, Free running 50/60Hz ± 0.1 (Crystal control)		
	Wave Form	Pure Sine Wave		
	Harmonic Distortion THDv	<2% at Full Load (Linear Load), <5% at Full Load (Non-linear Load)		
	Transient Condition	±5% for 100% instantaneous load variation (Step Load)		
	Overload Capability	130% for 60 sec., 150% for 3 sec., >150% for 200ms, automatic transfer to Bypass		
	Crest Factor	3 : 1		
EFFICIENCY	DC to AC	Approximate ≥ 89%		
	AC to AC	Approximate ≥ 92%		
BATTERY	Type	Li : Lithium-ion 10years Long Life with 3000 Cycle at DOD80%		
	Capacity	48V 10000 mAh (DOD 95%)	72V 10000 mAh (DOD 95%)	
	Voltage	48Vdc	72Vdc	
	Standard Backup Time	15-30min (Depend on load) / 15min Full Load		
	Recharge time	2-4 hours to 90% after load discharged		
	Charger Current(A)	Standard 4A		
	Battery Temperature Compensation for recharge	Li BMS Function		
TRANSFER TIME	Main fail or Recover UPS to bypass and vice versa	Zero Time (True Online UPS)		
INDICATOR	Front panel LED	Line, Inverter, Bypass, Battery, L-N input warning and Fault		
	Front panel LCD	Input voltage, Output voltage, Frequency, Battery voltage, % load, Temperature and UPS status		
PROTECTION	EMI/RFI Attenuation	>40 dB		
	Standard Surge Protection	IEC61643-11, LPZ3 / UL recognized surge protection to std.1449 Cat.A		
	Surge Energy Dissipation	220 Joules at 10/1000µsec (510 Joules option) (Imax = 8000A, Vclamp 775V)		
AUDIBLE ALARM	Multiple tones with reset for silence	Mains Failure, Low Battery, Overload and UPS Fault		
INPUT PLUG	Power cord 1.5 meter	NEMA 5-15P / IEC320-C13 (GS option)		
OUTPUT OUTLET	Rack mount	3 - 4xNational (Terminal option) / IEC320-C14 (option)		
COMMUNICATION INTERFACE	USB Port	USB port can be connected to PC, workstation or servers for automatic unattended shutdown / RS485 Modbus / Dry Contact (Option)		
	Software	UPSilon2000 supported for windows XP, 7, 8, 10, Novell Netware, Linux, FreeBSD (IBM, Sun, Solaris option)		
	SNMP/HTTP capability.	Option : SNMPL CARD / USB / Environment Set for Netagent & Utility		
ACOUSTIC NOISE	At 1 meter	< 55 dBA		
ENVIRONMENT	Temperature	0-45°C		
	Humidity %Rh	0-95 % (Non-Condensing)		
DIMENSIONS (W×H×D) mm.	Standard UPS Rack 19 inch 2U	440 × 570 × 88 (2U)		
WEIGHT (approximate in Kg.)	Standard UPS	14.0	19.0	19.2
CONFORMANCE	Design regulation	TIS.1291 Part1-2553, Part2-2553, Part3-2555 : C1, CE : IEC62040-1,-2,-3, IEC61000 / UL no.E337869 By QMS : ISO9001 / ISO14001 : 2015		

All above specification may be change without prior notice.

Chuphotic.BRO-35.UPS VENUS Knight VNKxxRM Li 2-3kVA.Rev1.00/2019

บริษัท ชูฟอทิก จำกัด

949 หมู่ 9 ต.ลำโพงเหนือ อ.เมืองสมุทรปราการ จ.สมุทรปราการ 10270

โทรศัพท์: 02 186 3010 แฟกซ์: 02 186 3018-9

www.chuphotic.com

E-mail: ups@chuphotic.com

ตัวแทนจำหน่าย :