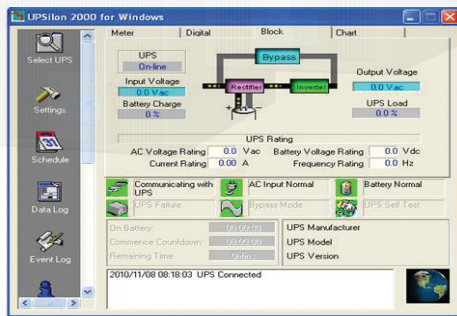
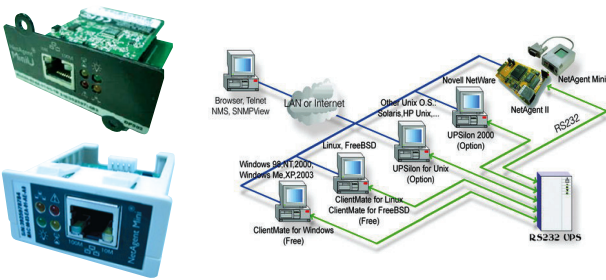


VENUS Knight-VNK (1-10kVA)
 DSP TRUE ONLINE DOUBLE CONVERSION UPS



UPSilon 2000 UPS monitoring software



Internal SNMP Card

NetAgent connection Software

SNMP/HTTP monitor capability

Features

- Advance Digital DSP control and IGBT Technology
- True Online Double Conversion UPS
- High Input Power Factor Correction PFC > 0.99
- Low Input Current THDi < 5%
- Pure Sine Wave output less than 2% THDv
- High Inverter Efficiency (Eff. ≥ 95%)
- Wide Input Voltage / Frequency range 120-295Vac
- Zero Transfer Time
- Output Voltage 220V ± 1% at PF 0.9
- Self-Diagnosis at UPS start-up with LCD
- Advanced Battery Management (ABM)
- Surge, Spike, Blackout, Brownout, Overload and Short Circuit PQ Protection
- Parallel Redundant N+X, N+1 (Option : 5 - 10kVA)
- Economy mode (ECO) (Option : 5 - 10kVA)
- Emergency Power Off (EPO)
- Optional External Battery Unit
- Maintenance Bypass Switch (Option : 5 - 10kVA)
- EMI/RFI and Power line Noise protection
- USB port with UPSilon2000 monitoring
- RS485 Modbus / Dry Contact port (Option)
- SNMP/HTTP monitor & Environment Set. (Option)
- TIS 1291 Part1-2553, Part2-2553, Part3-2555 : C1
- CE : IEC62040-1,-2,-3, IEC61000, UL E337869
- ISO9001 / ISO14001:2015 Certified Manufacture

Applications

- Server, Data Network
- Telecommunication
- Medical Equipment
- Transportation
- Banking & Financial
- Manufacturer
- Office Automation



Chuphotic UPS have range from 500VA to 1000KVA is also widely used to protect electronic equipments such as Computer, Server, Networks, PABX, CCTV, Telecommunications, Medical, Scientific Equipment and Industrial, etc. Power Quality From Blackout, Brownout, Surge, Spike, Harmonic, Noise and Frequency Drift, etc.



มอก.1291
 เล่ม 1-2553
 เล่ม 2-2553
 เล่ม 3-2555



www.chuphotic.com

VENUS Knight-VNK (1-10kVA)

DSP TRUE ONLINE DOUBLE CONVERSION UPS

SPECIFICATIONS

Model	Standard UPS	VNK1000S	VNK2000S	VNK3000S	VNK5KS	VNK6KS	VNK10KS
	Long Backup UPS	VNK1000L	VNK2000L	VNK3000L	VNK5KL	VNK6KL	VNK10KL
CAPACITY	For Computer Load (VA/W)	1000/900	2000/1800	3000/2700	5000/4500	6000/5400	10000/8000
SYSTEM	Controller	Intelligent UPS with DSP control					
	Technology	High Frequency Online Double Conversion UPS, Power Factor Correction (PFC) with IGBT Technology					
INPUT	Voltage nominal	220Vac Single phase (Selectable 208/220/230/240V) L-N+PE					
	Voltage range	220Vac: -45% to +35%			220Vac: -35% to +25%		
	Frequency	50/60Hz ±6% (Auto Detect) at nominal voltage (±10% option)					
	Power Factor	PF>0.99 at Full Load					
OUTPUT	Input Harmonic current THDi	<5%					
	Voltage	220V ±1% (Selectable 208/220/230/240V)					
	Phase	Single Phase L-N+PE					
	Frequency	Normally locked to line frequency, Free running 50Hz ±0.1% (Crystal control)					
	Wave Form	Pure Sine Wave					
	Harmonic Distortion THDv	<2% at Full Load(Linear Load), <5% at Full Load(Non-linear Load)					
	Transient Condition	±5% for 100% instantaneous load variation (Step Load)					
	Overload Capability	130% load for 60sec, 130% load for 30sec, >150% load for 300ms then automatic transfer to Bypass			125% load for 10min, 150% load for 1min, >150% load for 1sec then automatic transfer to Bypass		
Crest Factor	3 : 1						
EFFICIENCY	Protection	Over / Under voltage, Overload, Short circuit, Over temperature and Battery low voltage shutdown					
	DC to AC	Approximate ≥ 90%			Approximate ≥ 92%		
BATTERY	AC to AC	Approximate ≥ 94%			Approximate ≥ 95%		
	Type	AGM / SLA : Seal Lead Acid Battery (maintenance-free) Rechargeable					
	Capacity	2x12V 9.4Ah	4x12V 9.4Ah	6x12V 9.4Ah	16x12V 9.4Ah		
	Voltage	24Vdc	48Vdc	72Vdc	192Vdc		
	Standard Backup Time	15-30min (Depend On Computer Load)					
	Extend Backup Time	Optional with EXT. Battery Unit					
	Recharge time	6-8 hours to 90% after load discharged					
	Charger Current(A)	Standard : 1A / Long Backup : 4A			Standard : 1A/Long Backup : 1-8A Adjustable		
Battery Temperature Compensation for recharge	Option						
TRANSFER TIME	Main fail or Recover UPS to bypass and vice versa	Zero Time (True Online UPS)					
INDICATOR	Front panel LED	Line, Inverter, Bypass, Battery, L-N input warning and Fault					
	Front panel LCD	Input voltage, Output voltage, Frequency, Battery voltage, % load, Temperature and UPS status					
PROTECTION	EMI / RFI Attenuation	>40 dB					
	Standard Surge Protection	IEC61643-11, LPZ3 / UL recognized surge protection to std.1449 Cat.A					
	Surge Energy Dissipation	at 10/1000µsec 220Joules (510 Joules option)(Imax = 8000A Vclamp775V)					
AUDIBLE ALARM	Multiple Tones with reset for silence	Mains Failure, Low Battery, Overload and UPS Fault					
UPS CONNECTION	Input	NEMA5-15P-IEC320-C13 (GS Option)			Terminal		
	Output	3xNational	4xNational		Terminal		
COMMUNICATION INTERFACE	USB Port	USB port can be connected to PC, workstation or servers for automatic unattended shutdown./ RS485 Modbus / Dry Contact (option)					
	Software	UPSilon2000 supported for windows 95, 98, NT, 2000, Me, XP, Novell Netwave, Linux, FreeBSD (IBM, Sun, Solaris option)					
	SNMP/HTTP capability.	Option : SNMP CARD / USB / Environment Set for Netagent & Utility					
ACOUSTIC NOISE	At 1 meter	< 50 dBA			< 55 dBA		
ENVIRONMENT	Temperature	0-45°C					
	Humidity %Rh	0-95% (Non-Condensing)					
DIMENSIONS (WxHxD) mm.	UPS include standard battery	145x360x225	190x400x330		230x500x553		
	Long Backup UPS	145x360x225	190x400x330		190x422x337		
	Battery Unit Extension (option)	Depending on Battery Unit / Capacity					
WEIGHT (approximate in Kg.)	UPS include standard battery	9.0	18.0	23.0	54	56	
	Long Backup UPS	4.5	8.5	9.2	11	12	
	Battery Unit Extension (option)	Depending on Battery Unit / Capacity					
CONFORMANCE	Product Certification	TIS.1291 Part 1-2553, Part 2-2553, Part 3-2555 : C1, CE : IEC62040-1,-2,-3 QMS By ISO9001 / ISO14001 : 2015					

All above specification may be change without prior notice.

Chuphotic: BRO-32:UPS VENUS Knight-VNK(1-10kVA) Rev1.00/2019

บริษัท ชูไฟติก จำกัด

949 หมู่ 9 ต.ลำไทรเหนือ อ.เมืองสมุทรปราการ จ.สมุทรปราการ 10270

โทรศัพท์: 02 186 3010 แฟกซ์: 02 186 3018-9

www.chuphotic.com

E-mail: ups@chuphotic.com

ตัวแทนจำหน่าย :