

# VENUS ULTIMATE Plus

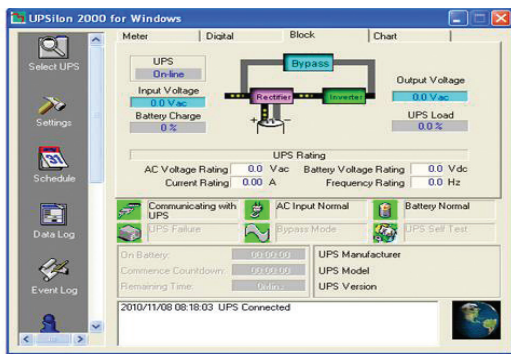
## VNU 1-10kVA



### DSP TRUE ONLINE DOUBLE CONVERSION UPS

#### Features

- True Online Double Conversion Pure Sine Wave UPS
- Advanced DSP digital controlled and IGBT technology
- High input Power Factor Correction (PFC>0.99)
- Output Pure Sine Wave less than 3% (THDv)
- Output voltage 220Vac +/-1% (200, 208, 220, 230, 240V)
- Wide Input Voltage Range 120 - 300Vac
- High Inverter Efficiency (approx.≥90%)
- Zero Transfer Time with Static Transfer Switch (SCR)
- Self Diagnosis at UPS start up or Manual Self Test
- Advanced Battery Management (ABM)
- Battery Capacity & Remaining Backup Time
- EMI/RFI and Power line noise protection
- Surge, Lightning, Spike, Blackout, Brownout
- Overload and Short circuit Protection
- USB Port with UPSilon 2000 Monitoring
- External Battery Unit (Option: Battery charger)
- SNMP / HTTP Internet Network / AS400 (Option)
- Parallel Redundancy N+X 5-10kVA (Option)
- Maintenance Bypass switch 5-10kVA
- EPO: Emergency Power Off / ECO: Economy (Option)
- TIS 1291 Part 1-2553, Part 2-2553, Part 3-2555 : C1
- CE : IEC62040-1, -2, -3, IEC55022, IEC61000
- ISO9001 / ISO14001 : 2015 Certified Manufacturer

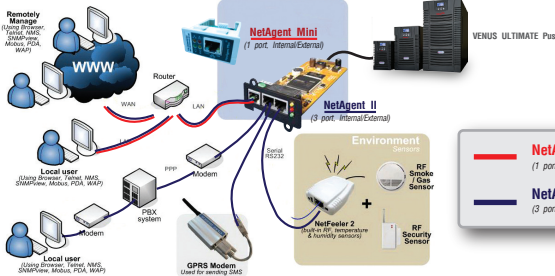


**UPSilon 2000 UPS Monitoring software**

#### LCD DISPLAY REAL TIME STATUS



1. LCD Display
2. On-Line Mode
3. Battery Mode
4. Output
5. Bypass Mode
6. Function Switch
7. ON/OFF Switch



**SNMP/HTTP Internet Network capability (option)**

Chuphotic UPS have range from 500VA to 1000KVA is also widely used to protect electronic equipments such as computer, server, networks, PABX, CCTV, telecommunications, medical, scientific equipment and industrial, etc. from blackout, browout, surge, spike, harmonic, noise and frequency drift.



พฉก.1291  
 เล่ม 1-2553  
 เล่ม 2-2553  
 เล่ม 3-2555



# VENUS ULTIMATE Plus

## DSP TRUE ONLINE DOUBLE CONVERSION UPS

**SPECIFICATION**

Model	Standard UPS	VNU1000P	VNU2000EP	VNU2000P	VNU3000P	VNU5KP	VNU6KP	VNU10KP	
	Long backup UPS	VNU1000PL	VNU2000EPL	VNU2000PL	VNU3000PL	VNU5KPL	VNU6KPL	VNU10KPL	
<b>CAPACITY PF=0.9</b>	For Computer Load (VA/W)	<b>1000/900</b>	<b>2000/1800</b>	<b>2000/1800</b>	<b>3000/2700</b>	<b>5000/4500</b>	<b>6000/5400</b>	<b>10000/8000</b>	
<b>SYSTEM</b>	Controller	Intelligent UPS with DSP controlled				Intelligent UPS with DSP control 3level IGBT Technology			
	Technology	High Frequency Double Conversion Pure sine wave UPS, Power Factor Correction(PFC) with IGBT Technology							
<b>INPUT</b>	Voltage	220Vac : 200/208/220/230/240Vac Single Phase							
	Voltage Range	110-290Vac at Half Load, 160-290Vac at Full Load				120-286Vac at Half Load, 160-286Vac at Full Load			
	Frequency	50/60Hz ±6% (Auto Detect) at nominal voltage (±10% option)							
	Power Factor	PF>0.99 at Full Load, THDi<5%							
<b>OUTPUT</b>	Voltage	220Vac ±1% / (200, 208, 230, 240 selecting on LCD panel and software)							
	Phase	Single Phase L-N+PE							
	Frequency	Normally locked to line frequency, Free running 50Hz ±0.1% / (60Hz selecting on LCD panel and software)							
	Wave Form	Pure Sine Wave							
	Harmonic Distortion	THDv <3% at Linear Load / <5% at Non Linear Load							
	Transient Condition	±5% for 100% instantaneous load variation (Step Load)							
	Overload Capability	120% for 60 sec., 150% for 30 sec., >150% for 300ms Then Automatic Switch to Bypass				120% for 2min., 150% for 30sec., >150% for 1sec. Then Automatic Switch to Bypass			
	Crest Factor	3 : 1							
<b>EFFICIENCY</b>	DC to AC	Approximate ≥ 87%				Approximate ≥ 92%			
	AC to AC	≥ 87% at Full Linear Load				≥ 92% at Full Linear Load			
<b>BATTERY</b>	Type	Seal Lead Acid (Maintenance-free) Rechargeable Battery (High rate / UL 94-V0 option)							
	Capacity	3x12V7.5Ah	6x12V 7.5Ah	8x12V 7.5Ah		20x12V 7.5Ah		20x12V 9.4Ah	
	Voltage	36Vdc	72Vdc	96Vdc		240Vdc			
	Standard Backup Time	15-30min (Depend on Load)							
	Extend Backup Time	15-120min Depend on Battery Unit Cap.							
	Recharge Time	3-6 hours to 90% after Load Backup							
	Charger Current(A)	Standard 1.5A / Long backup 3.5A (option)				Standard 1.5A / Long backup 3.5A (option)			
<b>TRANSFER TIME</b>	Main Fail or Recover UPS to Bypass and vice versa	Zero Transfer Time with Static Transfer Switch (ATS-SCR)							
<b>INDICATOR</b>	Front Panel LED	Line, Inverter, Bypass and Battery (Mimic)							
	Front Panel LCD	Operate UPS Status, Input Voltage, Output Voltage, Frequency, Bypass, Battery Voltage, % Battery, Remaining Backup Time, % Load, VA, Watt, Temperature, Fan and UPS Fault							
<b>PROTECTION</b>	EMI / RFI Attenuation	>40 dB							
	Surge Protection	Indoor: UL1449 Cat A, B / IEC 61643 LPZ3, 2 In 3kA at 8/20µsec							
	Surge Energy Dissipation	SPD 300Vac : 220Joules in 2msec at Power 30kW Imax 6kA							
<b>AUDIBLE ALARM</b>	Multiple Tones with Reset for Silence	Mains Failure, Low Battery, Overload and UPS Fault							
<b>INPUT PLUG</b>	Power Cord 1.5meter	NEMA 5-15P(IEC 320, GS option)				Terminal			
<b>OUTPUT OUTLET</b>	Tower	4xNational	4xNational + Terminal			Terminal			
<b>COMUNICATION INTERFACE</b>	USB Port	USB port can be connected to PC, workstation or servers for automatic unattended shutdown / RS485 / AS400 Dry Contact (option)							
	Software	UPSilon2000 supported for windows 95, 98, NT, 2000, Me, XP, Novell Netware, Linux, FreeBSD (IBM, Sun, Solaris option)							
	SNMP / HTTP Slot	Option : SNMP CARD / AS400 Dry Contact / RS485 / NB IoT, 3G/4G-IoT							
<b>ACOUSTIC NOISE</b>	At 1 meter	< 45 dBA				< 50 dBA			
<b>ENVIRONMENT</b>	Temperature	0-40°C							
	Humidity	RH 0-95% (Non-Condensing)							
<b>DIMENSIONS (WxDxH) mm</b>	UPS include Battery	145x350x230	190x425x330			260x560x720			
	Long Backup UPS	145x350x230	190x425x330			260x560x720			
	Battery Unit Extension (option)	Separate (UPS and Battery Unit Extension)							
<b>WEIGHT (approximate in Kg.)</b>	UPS include Battery	13	23	28	29	70	80		
	Long Backup UPS	6.5	14	14	14	26	28		
	Battery Unit Extension (option)	Depending on Battery Capacity							
<b>CONFORMANCE</b>	Design Regulation	TIS.1291 Part1-2553 : Safety, TIS.1291 Part2-2553 : EMC, TIS.1291 Part3-2555 : Performance Cat, C1 CE : IEC / EN 62040-1, IEC / EN 62040-2, IEC / EN 62040-3, IEC / EN 55091-1,-2, IEC55022, IEC / EN 61000							

\*All above specification may be change without prior notice.

CHU-EN.BRO-67.UPS.VNU-Plus.Rev1.00/2021

**บริษัท ชูไฟท์ค จำกัด**

949 หมู่ 9 ต.ลำโพงเหนือ อ.เมืองสมุทรปราการ จ.สมุทรปราการ 10270

โทรศัพท์: 02 186 3010 แฟกซ์: 02 186 3018-9

www.chuphotic.com

E-mail: ups@chuphotic.com

ตัวแทนจำหน่าย :