

CHUPHOTIC VENUS UPS

Performance Power Solutions

Venus Ultimate Plus VNU 1-10K



DSP True Online Double Conversion UPS
Rack and Tower Convertible



มอก.1291
เล่ม 1-2553
เล่ม 2-2553
เล่ม 3-2555



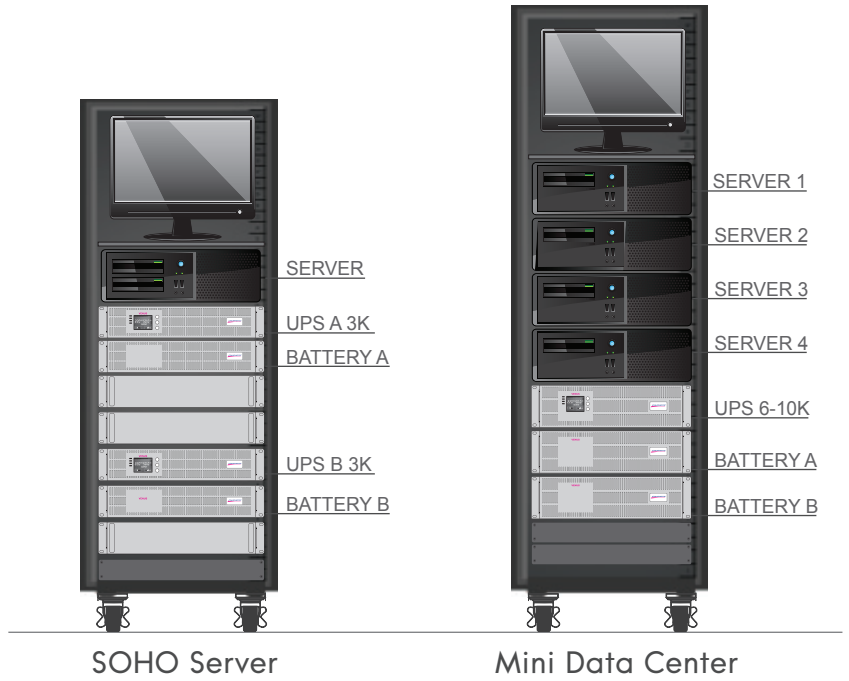
IEC-62040



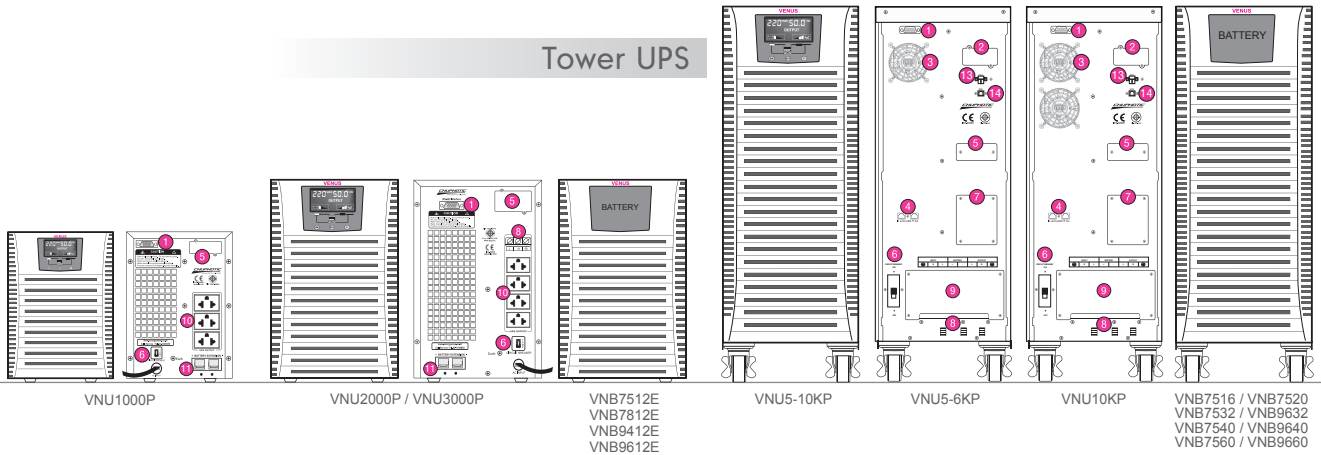
www.chuphotic.com

Features

- True Online Double Conversion Pure Sine Wave UPS
- Advanced DSP digital control technology
- 3 Level IGBT Inverter Technology(5-10K)
- High Input power factor correction (PFC)>0.99
- Rackmount 19" 2U, 3U and 5U
- Output pure sine wave less than 2%(THDv)
- Output voltage 220Vac +/-1%
- Output power factor 1-6K pf0.9, 10K pf0.8
- High inverter efficiency(approx.≥95%)
- Built in static transfer switch(SCR)
- Self diagnosis at UPS start up/Manual self test
- Advanced battery management(ABM)
- EMI/RFI and power line noise protection
- Cold start function
- Surge, lightning, spike, blackout, brownout, overload and short circuit
- RS232 communication with UPSilon 2000 monitoring software / RS485 and USB port (option)
- External battery bank (option)
- SNMP/HTTP monitor capability (option)
- Parallel redundancy N+X (option) 5-10kVA
- Maintenance bypass switch 5-10kVA
- Automatic/Manual bypass
- Economy mode(ECO), Emergency power off(EPO) (option)
- Output Isolation Transformer (option)
- Compatible with Generator

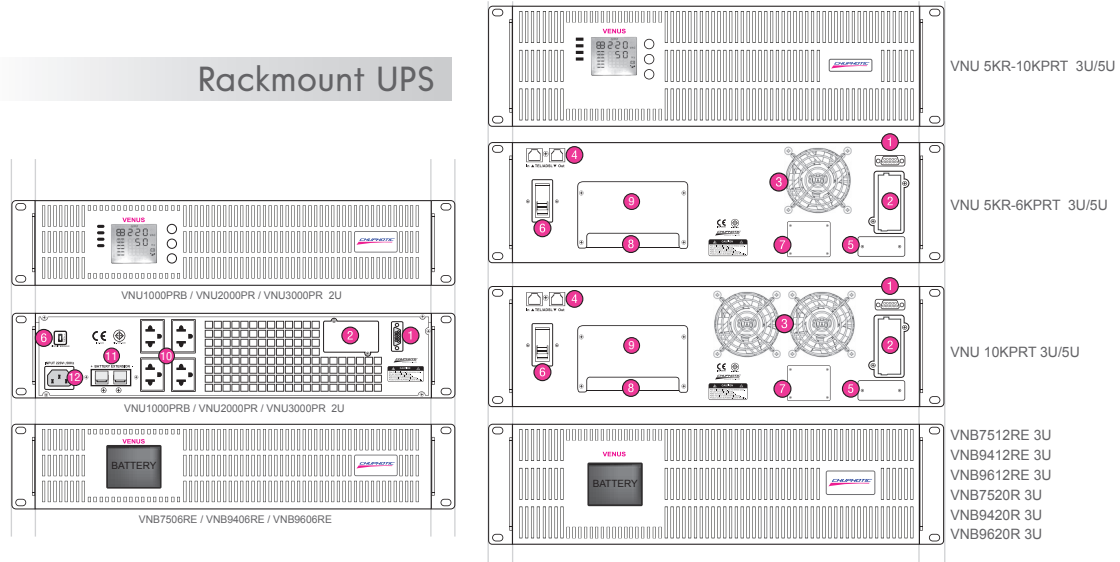


Tower UPS



- ① RS232 port
- ② SNMP card slot
- ③ Fan
- ④ RJ45
- ⑤ Parallel Port
- ⑥ AC input breaker
- ⑦ Maintenance Bypass Switch
- ⑧ Input/Output Terminal
- ⑨ Terminal cover
- ⑩ Outlet 3 Pcs(4 Pcs Option)
- ⑪ Battery Extension
- ⑫ Inlet IEC320
- ⑬ EPO
- ⑭ UPS

Rackmount UPS



VENUS ULTIMATE PLUS

DSP True Online Double Conversion UPS



SPECIFICATION

| Model | Tower UPS | VNU1000P | VNU2000P | VNU3000P | VNU5KP | VNU6KP | VNU10KP |
|------------------------------------|---|---|--------------------------------------|--------------|--|--------------|----------------|
| | Rackmount UPS | VNU1000PRTB | VNU2000PRT | VNU3000PRT | VNU5KPRT | VNU6KPRT | VNU10KPRT |
| CAPACITY | For computer load | 1000VA/900W | 2000VA/1800W | 3000VA/2700W | 5000VA/4500W | 6000VA/5400W | 10000VA/8000W |
| SYSTEM | Controller | Intelligent UPS with DSP control | | | Intelligent UPS with DSP control 3level IGBT Technology | | |
| | Technology | High Frequency Double Conversion Pure sine wave UPS, Power Factor Correction(PFC) with IGBT Technology | | | | | |
| INPUT | Voltage | 220 Vac Single phase nominal voltage | | | | | |
| | Voltage range | 110-290Vac at half load, 160-290 Vac at full load | | | 120-286Vac at half load, 160-286 Vac at full load | | |
| | Frequency | 50/60 Hz ±10% (auto detect) at nominal voltage | | | | | |
| | Power factor | >0.99 at full load, THDI≤6% | | | | | |
| OUTPUT | Voltage | 220Vac ±1% / (200, 208, 230, 240 selecting on LCD panel and software) | | | | | |
| | Phase | Single phase | | | | | |
| | Frequency | Normally locked to line frequency, Free running 50Hz ±0.1%/(60 Hz selecting on LCD panel and software) | | | | | |
| | Wave form | Pure sine wave | | | | | |
| | Harmonic distortion THDV | <2% at full load(linear load), <5% at full load (non linear load) | | | | | |
| | Transient condition | ±5% for 100% instantaneous load variation | | | | | |
| | Overload capability | 120% for 60sec, 150% for 30 sec, >150% for 300ms, then automatic switch to bypass | | | 125% for 60sec, 150% for 30 sec, >150% for 300sec, then automatic switch to bypass | | |
| | Crest factor | 3 : 1 | | | | | |
| EFFICIENCY | Protection | Overload, Over voltage, Under voltage, Shot circuit, Over temperature and Battery low voltage shutdown | | | | | |
| | DC to AC | Approximate ≥ 85% | | | Approximate ≥ 95% | | |
| | AC to AC | ≥ 87% at full linear load | | | ≥ 95% at full linear load | | |
| BATTERY | Type | Sealed Lead Acid (maintenance-free) Rechargeable (High rate/ UL 94-V0 option) | | | | | |
| | Capacity | 2x12V 7.5Ah | 6x12V 7.5Ah | | 20x12V 7.5Ah(16pcs option) | | 20x12V 9.6Ah |
| | Voltage | 24Vdc | 72Vdc | | 240Vdc(192Vdc option) | | (16pcs option) |
| | Standard backup time | 3min 900W | 4min 1800W | 3min 2700W | 5min 4500W | 4min 5400W | 3min 8000W |
| | Extend backup time | 10-120 min | | | | | |
| | Recharge time | 3 hours to 90% after load discharged | | | | | |
| | Charger Current(A) | 1.5A (3.5A-7A option) | | | 1.5A/5.5A (3.5A-7A option) | | |
| | Battery temperature compensation for recharge | Option | | | | | |
| TRANSFER TIME | Main to battery mode Battery mode to main | Zero transfer time (0 ms.) | | | | | |
| INDICATOR | Front panel LED | Line, Inverter, Bypass and Battery | | | | | |
| | Front panel LCD | Operate UPS status, Input voltage, Output voltage, Frequency, Bypass, Battery voltage, % Battery, % Load, VA, Watt, Temperature, Fan and Fault code | | | | | |
| PROTECTION | EMI/RFI attenuation | >40 dB | | | | | |
| | Surge protection | UL recognized surge protection to std.1449 | | | | | |
| | Surge energy dissipation | 220 Joules 300Vac (510 Joules option)(2 microsec wave form) | | | | | |
| AUDIBLE ALARM | Multiple tones with reset for silence | Mains Failure, Low battery, Overload and UPS fault | | | | | |
| INLET | Tower UPS | Power cord 1.5 meter NEMA 5-15P fixed cabinet | | | Terminal | | |
| | Rackmount UPS | Power cord 1.5 meter NEMA 5-15P - IEC 320 | | | Terminal | | |
| OUTLET | Tower UPS | 3xUniversal or IEC320-C13 | 4xUniversal or IEC320-C13 + Terminal | | Terminal | | |
| | Rackmount UPS | 4xUniversal or IEC320-C13 | | | Terminal | | |
| COMUNICATION INTERFACE | DB-9 connector | RS-232 serial port can be connected to PC, workstation or servers for automatic unattended shutdown/ RS485 and USB port (option) | | | | | |
| | Software | UPSilon2000 supported for windows 95, 98, NT, 2000, Me, XP, Novell Netware, Linux, FreeBSD (IBM, Sun, Solaris option) | | | | | |
| | SNMP/HTTP capability. | Option | | | | | |
| ACOUSTIC NOISE | At 1 meter | < 45 dBA | | | < 50 dBA | | |
| ENVIRONMENT | Temperature | 0-50°C | | | | | |
| | Humidity | 0-95 % (Non-Condensing) | | | | | |
| DIMENSIONS (WxDxH) mm | Tower UPS / Long Backup | 145x350x236 | 190x424x328 | | 260x533x560 | | |
| | Rackmount UPS | 483x450x2U | | | 483x650x3U | | |
| | Battery unit extension (option) | Separate (UPS and Battery extension rack) | | | | | |
| WEIGHT (approximate in Kg.) | Tower UPS | 10.5 | 24 | 25 | 76 | 79 | |
| | Rackmount UPS + Battery unit | 15.5(included) | 12+19 | 12+19 | 30+57 | | 32+69 |
| | Battery extension rack (option) | Depending on battery capacity | | | | | |
| CONFORMANCE | Design regulation | TIS.1291 Part1-2553, Part2-2553, Part3-2555:C1, CE, EN62040-1, EN62040-2, EN50091-2, EN61000-3-2/-3, EN61000-4-5 | | | TIS.1291 Part1-2553, Part2-2553, Part3-2555:C1, CE, EN62040-1, EN62040-2, EN55022, EN61000-4-2/3/4/5 | | |

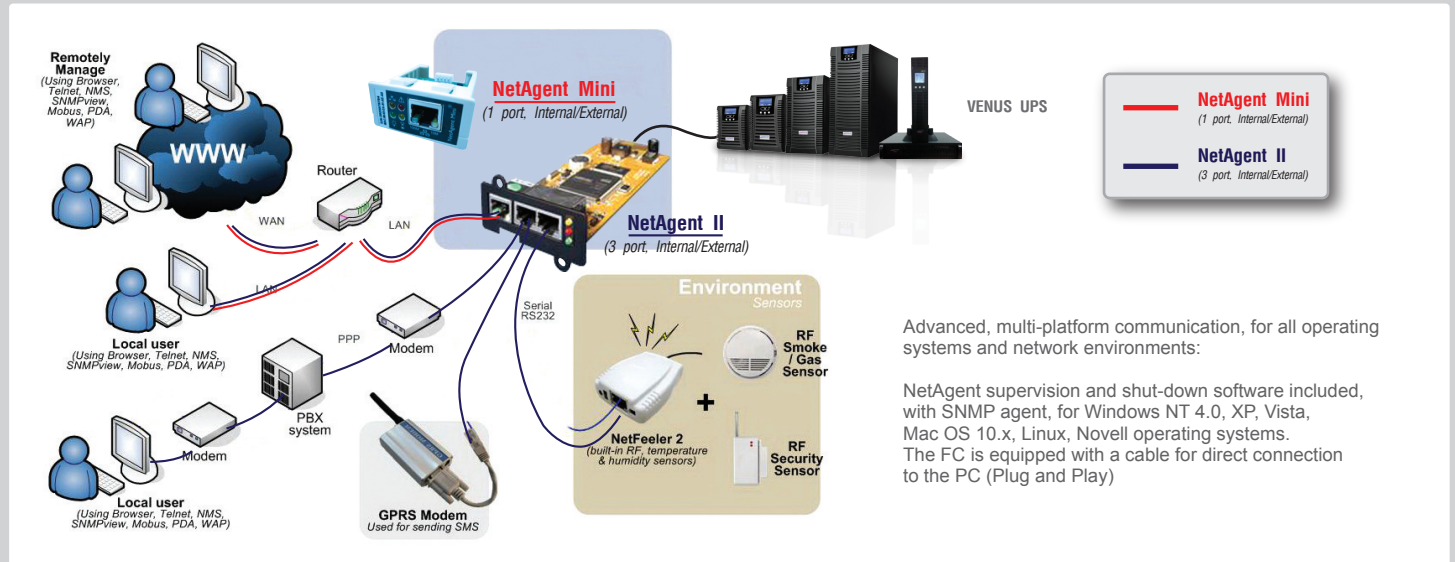
*R = Rack Mount UPS

*Long backup Please call chuphotic

*All above specification may be change without prior notice.

Chuphotic.BRO-39.UPS.VENUS ULTIMATE PLUS.Rev1.00/2018

Communication and Power Management Solutions

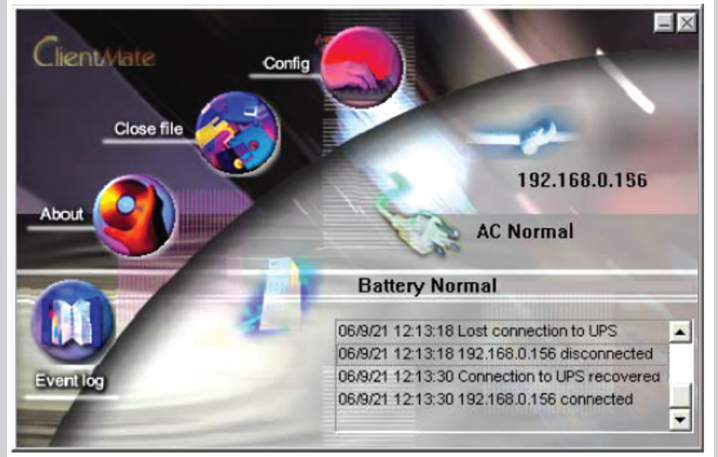


Advanced, multi-platform communication, for all operating systems and network environments:

NetAgent supervision and shut-down software included, with SNMP agent, for Windows NT 4.0, XP, Vista, Mac OS 10.x, Linux, Novell operating systems. The FC is equipped with a cable for direct connection to the PC (Plug and Play)

ADVANCED COMMUNICATION

- Comprehensive UPS management with flexible configuration via Web Browser, NMS, Telnet or SNMP.
- Support advance encryption: HTTPS, SSL, SSH, SNMPv3
- Centralized authentication by Radius
- Event notification via E-mail, SMS or Trap
- Support NetFeeler II (environment monitoring) with temperature, humidity, water presence, smoke and door / window sensors
- Support USB Wifi 802.11b/g, USB flash disk / external USB HDD, compatible USB camera & more
- Support UPS MIB, RFC1628, PPC MIB
- Support GPRS modem
- Multi-language user interface
- Real-time UPS monitoring
- Schedule periodic UPS self-test
- Record event / data log
- Can also provide shut-down software for: IBM AIX; Free BSD; BSDI UNIX; BSD/OS; SCO Unixware; SCO Openserver; Sun Solaris; Compaq True64; HP UNIX; HP OpenVMS; HP Openview; SGI Irix MIPS; NCR UNIX
- Battery test log



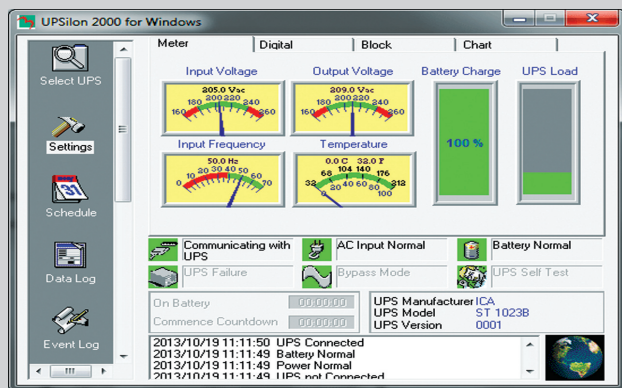
SNMP UDP

This is to configure the UDP port of the NetAgent and trap receiver. SNMP default port is 161; and Trap MIB is UDP162

AS-400 Card

The AS400 communication card provides contact closures for remote monitoring your UPS. To meet different application requirement, the AS400 card is capable of selection the status of the dry-contact signal (active close or active open) by setting jumper. This suitable applications are listed below:

- IBM Server, Personal PC & Workstations equipments
- Auto-controlled industrial equipment & communication applications



UPSilon 2000 UPS Monitoring software

For Microsoft Windows 95 / Microsoft Windows 98 / Microsoft Windows NT / Microsoft Windows 2000 / Microsoft Windows Me / Microsoft Windows XP / Novell NetWare, Linux, FreeBSD

Applications;

- Auto sending warning messages by e-mail.
- Auto detecting AC power failure and UPS battery low.
- Providing the UPS expected time setting of power supply.
- History data recording.
- Auto shutting down the system and turning off the UPS when AC power failed.
- Broadcasting the warning messages to all the workstations.
- Display the system shutdown countdown.
- Able to operate on server and workstation.
- Schedule on/off in a week
- Programmable UPS auto-testing period.
- UPS status reporting on server screen, including the input/output voltage, load, line frequency, temperature and so on.
- Local Network UPS monitoring through an Net Agent or SNMP Agent.

CHUPHOTIC Co.,Ltd.

949 Moo 9, Sumrong-Nue, Muang Samutprakarn, Samutprakarn 10270
Tel. : 02 186 3010 (Auto) Fax : 02 186 3018-19
www.chuphotic.com E-mail: ups@chuphotic.com

Authorized Dealer :

BACKUP TIME

| รุ่น | เวลาการจ่ายไฟสำรอง | | เวลาการชาร์จแบตเตอรี่ (ชั่วโมง) | กระแสไฟฟ้าที่ชาร์จแบตเตอรี่ (แอมป์) | แบตเตอรี่ที่อยู่ใน UPS (ขนาด x จำนวน) | แบตเตอรี่แบบขยายเวลาการจ่ายไฟสำรอง (Battery extension unit) | |
|-----------------------|--------------------|---------|---------------------------------|-------------------------------------|---------------------------------------|---|------------------------------|
| | VA/W | นาที | | | | ขนาด x จำนวน | แบตเตอรี่ต่อขยายเวลา x จำนวน |
| Venus Ultimate | | | | | | | |
| VNU1000P | 1000VA/900W | 4 min. | 3-4 hours | 1.5A | [12V7.5Ah] x 2pcs | No | No |
| VNU1000PL | | 10 min. | 3-4 hours | 3.5A | No | [12V7.5Ah] x 2pcs | [VNB 7504] x 1unit |
| | | 27 min. | 3-4 hours | 3.5A | No | [12V7.5Ah] x 8pcs | [VNB 7508] x 1unit |
| VNU1000PRB | 1000VA/900W | 4 min. | 3-4 hours | 1.5A | [12V7.5Ah] x 2pcs | No | No |
| VNU1000PRL | | 10 min. | 3-4 hours | 3.5A | No | [12V7.5Ah] x 4pcs | [VNB 7504R] x 1unit |
| | | 27 min. | 3-4 hours | 3.5A | No | [12V7.5Ah] x 8pcs | [VNB 7508R] x 1unit |
| VNU2000P | 2000VA/1800W | 6 min. | 3-4 hours | 1.5A | [12V7.5Ah] x 6pcs | No | No |
| VNU2000PL | | 15 min. | 3-4 hours | 3.5A | No | [12V7.5Ah] x 12pcs | [VNB 7512] x 1unit |
| | | 30 min. | 3-4 hours | 3.5A | No | [12V7.5Ah] x 24pcs | [VNB 7512] x 2unit |
| VNU2000PLX | | 75 min. | 4-6 hours | 7A | No | [12V7.5Ah] x 36pcs | [VNB 7512] x 3unit |
| VNU2000PR | 2000VA/1800W | 6 min. | 3-4 hours | 1.5A | No | [12V7.5Ah] x 6pcs | [VNB 7506R] x 1unit |
| VNU2000PRL | | 15 min. | 3-4 hours | 3.5A | No | [12V7.5Ah] x 12pcs | [VNB 7506R] x 2unit |
| | | 30 min. | 4-6 hours | 3.5A | No | [12V7.5Ah] x 24pcs | [VNB 7512R] x 2unit |
| VNU2000PRLX | | 75 min. | 4-6 hours | 7A | No | [12V7.5Ah] x 36pcs | [VNB 7512R] x 3unit |
| VNU3000P | 3000VA/2700W | 5 min. | 3-4 hours | 1.5A | [12V7.5Ah] x 6pcs | No | No |
| VNU3000PL | | 12 min. | 3-4 hours | 1.5A | No | [12V9.4Ah] x 12pcs | [VNB 9412] x 1unit |
| | | 26 min. | 4-6 hours | 3.5A | No | [12V9.4Ah] x 18pcs | [VNB 9418] x 1unit |
| VNU3000PLX | | 60 min. | 4-6 hours | 7A | No | [12V9.4Ah] x 36pcs | [VNB 9418] x 2unit |
| VNU3000PR | 3000VA/2700W | 5 min. | 3-4 hours | 1.5A | No | [12V7.5Ah] x 6pcs | [VNB 7506R] x 1unit |
| VNU3000PRL | | 12 min. | 3-4 hours | 1.5A | No | [12V9.4Ah] x 12pcs | [VNB 9406R] x 2unit |
| | | 26 min. | 4-6 hours | 3.5A | No | [12V7.5Ah] x 24pcs | [VNB 7512R] x 2unit |
| VNU3000PRX | | 60 min. | 4-6 hours | 7A | No | [12V9.4Ah] x 36pcs | [VNB 9412R] x 3unit |
| VNU5KP | 5000VA/4500W | 6 min. | 3-4 hours | 1.5A | [12V7.5Ah] x 20pcs | No | No |
| VNU5KPL | | 16 min. | 3-4 hours | 3.5A | No | [12V7.5Ah] x 40pcs | [VNB 7540] x 1unit |
| | | 58 min. | 4-6 hours | 3.5A | No | [12V7.5Ah] x 80pcs | [VNB 7540] x 2unit |
| VNU5KPLX | | 60 min. | 4-6 hours | 7A | No | [12V50Ah] x 20pcs | [VNB 5020] x 1unit |
| VNU5KPR | 5000VA/4500W | 6 min. | 3-4 hours | 1.5A | No | [12V7.5Ah] x 20pcs | [VNB 7520R] x 1unit |
| VNU5KPRL | | 16 min. | 3-4 hours | 3.5A | No | [12V7.5Ah] x 40pcs | [VNB 7520R] x 2unit |
| | | 35 min. | 4-6 hours | 3.5A | No | [12V7.5Ah] x 60pcs | [VNB 7520R] x 3unit |
| VNU5KPRX | | 72 min. | 4-6 hours | 7A | No | [12V7.5Ah] x 80pcs | [VNB 7520R] x 4unit |
| VNU6KP | 6000VA/5400W | 4 min. | 3-4 hours | 1.5A | [12V7.5Ah] x 20pcs | No | No |
| VNU6KPL | | 13 min. | 3-4 hours | 3.5A | No | [12V7.5Ah] x 40pcs | [VNB 7540] x 1unit |
| | | 37 min. | 4-6 hours | 3.5A | No | [12V7.5Ah] x 80pcs | [VNB 7540] x 2unit |
| VNU6KPLX | | 75 min. | 4-6 hours | 7A | No | [12V50Ah] x 20pcs | [VNB 5020] x 1unit |
| VNU6KPR | 6000VA/5400W | 4 min. | 3-4 hours | 1.5A | No | [12V7.5Ah] x 20pcs | [VNB 7520R] x 1unit |
| VNU6KPRL | | 13 min. | 3-4 hours | 3.5A | No | [12V7.5Ah] x 40pcs | [VNB 7520R] x 2unit |
| | | 29 min. | 4-6 hours | 3.5A | No | [12V7.5Ah] x 60pcs | [VNB 7520R] x 3unit |
| VNU6KPRXL | | 63 min. | 4-6 hours | 7A | No | [12V7.5Ah] x 80pcs | [VNB 7520R] x 4unit |
| VNU10KP | 10000VA/8000W | 3 min. | 3-4 hours | 1.5A | [12V9.4Ah] x 20pcs | No | No |
| | | 10 min. | 3-4 hours | 3.5A | No | [12V9.4Ah] x 40pcs | [VNB 9440] x 1unit |
| VNU10KPL | | 28 min. | 4-6 hours | 3.5A | No | [12V9.4Ah] x 80pcs | [VNB 9440] x 2unit |
| | | 38 min. | 4-6 hours | 7A | No | [12V50Ah] x 20pcs | [VNB 5020] x 1unit |
| VNU10KPLX | | 60 min. | 4-6 hours | 7A | No | [12V65Ah] x 20pcs | [VNB 6520] x 1unit |
| VNU10KPR | 10000VA/8000W | 3 min. | 3-4 hours | 1.5A | No | [12V9.4Ah] x 20pcs | [VNB 9420R] x 1unit |
| VNU10KPRL | | 10 min. | 3-4 hours | 3.5A | No | [12V9.4Ah] x 40pcs | [VNB 9420R] x 1unit |
| | | 30 min. | 4-6 hours | 7A | No | [12V9.4Ah] x 60pcs | [VNB 9420R] x 2unit |
| VNU10KPRXL | | 60 min. | 4-6 hours | 7A | No | [12V9.4Ah] x 80pcs | [VNB 9420R] x 3unit |

*R = Rackmount UPS **L = Long backup UPS

*All above specification may be change without prior notice.

| Battery extension unit | ชนิดแบตเตอรี่ | แรงดันแบตเตอรี่ | กระแสแบตเตอรี่ | จำนวนแบตเตอรี่ | ขนาด/น้ำหนัก ตู้แบตเตอรี่ |
|------------------------|---------------|-----------------|----------------|------------------|-------------------------------|
| VNB 7504B | SLA 12V 7.5Ah | 24 V | 15 Ah | 2pcs x 2 String | 145 x 220 x 400 mm. / 13.5 kg |
| VNB 7504RB | SLA 12V 7.5Ah | 24 V | 15 Ah | 2pcs x 2 String | 483 x 450 x 2U mm. / 16.5 kg |
| VNB 7512E | SLA 12V 7.5Ah | 72 V | 15 Ah | 6pcs x 2 String | 145 x 220 x 400 mm. / 30.0 kg |
| VNB 9412E | SLA 12V 9.4Ah | 72 V | 18.8 Ah | 6pcs x 2 String | 145 x 220 x 400 mm. / 38.8 kg |
| VNB 7506RE | SLA 12V 7.5Ah | 72 V | 7.5 Ah | 6 pcs | 483 x 450 x 2U mm. / 21.0 kg |
| VNB 9406RE | SLA 12V 9.4Ah | 72 V | 9.4 Ah | 6 pcs | 483 x 450 x 2U mm. / 23.4 kg |
| VNB 7512RE | SLA 12V 7.5Ah | 72 V | 15 Ah | 6pcs x 2 String | 483 x 650 x 3U mm. / 42.0 kg |
| VNB 9612RE | SLA 12V 9.6Ah | 72 V | 19.2 Ah | 6pcs x 2 String | 483 x 650 x 3U mm. / 50.8 kg |
| VNB 7540I | SLA 12V 7.5Ah | 240 V | 15 Ah | 20pcs x 2 String | 260 x 717 x 560 mm. / 65.0 kg |
| VNB 9440I | SLA 12V 9.4Ah | 240 V | 18.8 Ah | 20pcs x 2 String | 260 x 717 x 560 mm. / 76.0 kg |
| VNB 5020I | SLA 12V 50Ah | 240 V | 50 Ah | 20 pcs | N/A |
| VNB 6520I | SLA 12V 65Ah | 240 V | 65 Ah | 20 pcs | N/A |
| VNB 7520RI | SLA 12V 7.5Ah | 240 V | 7.5 Ah | 20 pcs | 483 x 650 x 3U mm. / 65.0 kg |
| VNB 9420RI | SLA 12V 9.4Ah | 240 V | 9.4 Ah | 20 pcs | 483 x 650 x 3U mm. / 76.0 kg |