

# CHUPHOTIC VENUS UPS

Performance Power Solutions

Venus Ultimate Plus VNU 1-10K



DSP True Online Double Conversion UPS  
Rack and Tower Convertible



มอก.1291  
เล่ม 1-2553  
เล่ม 2-2553  
เล่ม 3-2555



# Features

- True Online Double Conversion Pure Sine Wave UPS
- Advanced DSP digital control technology
- 2/3 Level IGBT Inverter Technology
- High Input Power Factor Correction (PFC>0.99)
- Rackmount 19" 2U, 3U for UPS, Battery Unit
- Output Pure Sine Wave less than 2%(THDv)
- Output Voltage 220Vac +/-1% (200, 208, 220, 230, 240V)
- High Inverter Efficiency(approx.≥92%)
- Self Diagnosis at UPS start up / Manual Self Test
- Advanced Battery Management (ABM)
- Battery Capacity & Remaining Backup Time
- EMI/RFI and Power Line Noise protection
- AC/DC Cold Start Function
- Surge, Lightning, Spike, Blackout, Brownout
- Overload and Short Circuit Protection
- USB Port with UPSilon 2000 Monitoring
- External Battery Unit (Option: Battery Charger 3.5A)
- SNMP/HTTP Internet Network / AS400
- Parallel Redundancy N+X 5-10kVA (Option)
- Maintenance Bypass Switch 5-10kVA
- EPO : Emergency Power Off / ECO : Economy
- Output Isolation Transformer (option)
- Compatible with Generator
- TIS1291 Part1-2553, Part2-2553, Part3-2555 : C1
- CE : IEC / EN62040-1,-2,-3 IEC / EN55022, IEC61000
- ISO9001 / ISO14001 : 2015 Certificate MFG



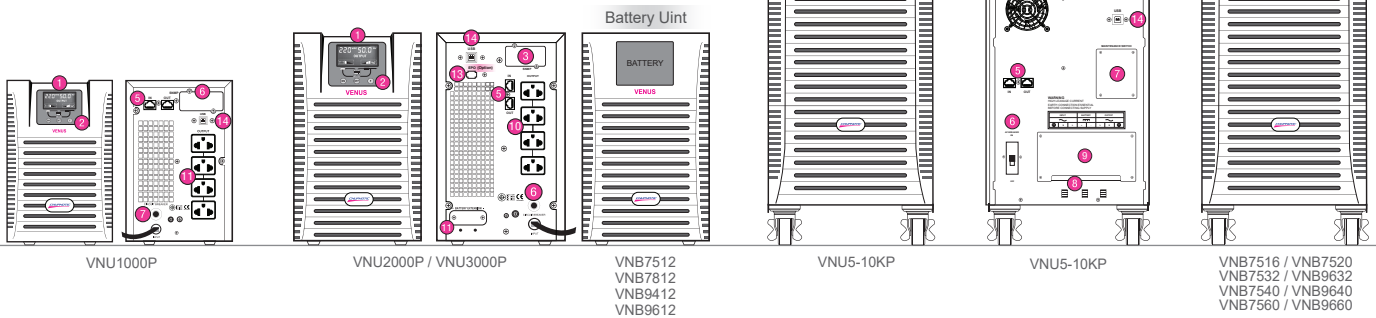
SOHO Server



Mini Data Center

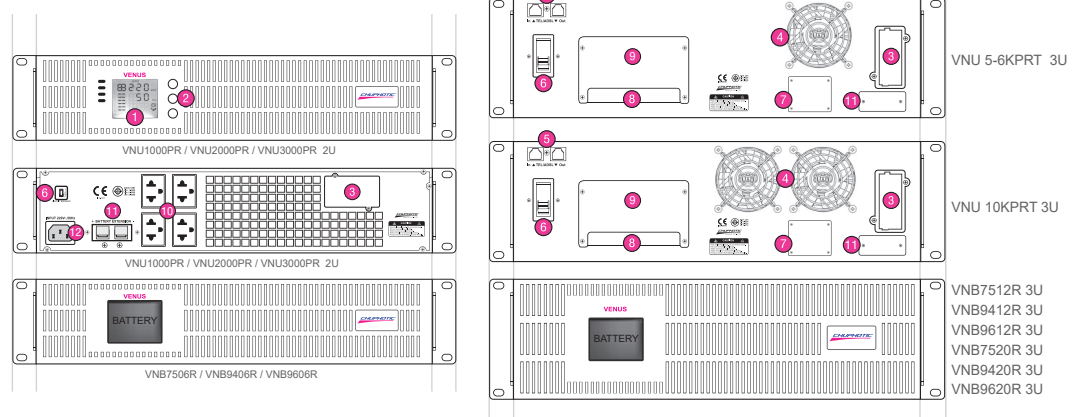


## Tower UPS



## Rackmount UPS

### Rack & Tower UPS



- 1 LCD Panel (Auto Turn)
- 2 Function Switch : LED Mimic
- 3 SNMP Card Slot
- 4 Fan
- 5 RJ45 Tel / ADSL SPD
- 6 AC Input Breaker
- 7 Maintenance Bypass Switch
- 8 Input/Output Terminal
- 9 Terminal Cover
- 10 Outlet 4 National
- 11 Battery Extension Anderson
- 12 Inlet IEC320 C14
- 13 EPO : Emergency Power off
- 14 USB Port + UPSilon2000



# VENUS ULTIMATE PLUS

DSP True Online Double Conversion UPS



## SPECIFICATION

Model	Tower UPS	VNU1000P	VNU2000P	VNU3000P	VNU5KP	VNU6KP	VNU10KP
	Rackmount UPS	VNU1000PRT	VNU2000PRT	VNU3000PRT	VNU5KPRT	VNU6KPRT	VNU10KPRT
<b>CAPACITY</b>	For Computer Load (VA/W)	<b>1000/900</b>	<b>2000V/1800</b>	<b>3000/2700</b>	<b>5000/4500</b>	<b>6000/5400</b>	<b>10000/8000</b>
<b>SYSTEM</b>	Controller	Intelligent UPS with DSP control 2level IGBT Technology			Intelligent UPS with DSP control 3level IGBT Technology		
	Technology	High Frequency Double Conversion Pure Sine Wave UPS, Power Factor Correction(PFC) with IGBT Technology					
<b>INPUT</b>	Voltage	220Vac : 200 / 208 / 220 / 230 / 240Vac Single Phase					
	Voltage Range	110-290Vac at Half Load ,160-290Vac at Full Load			120-286Vac at Half Load ,160-286Vac (±20%) at Full Load		
	Frequency	50/60Hz ±10% (Auto Detect) at Nominal voltage (±6%Option)					
	Power Factor Correction	PFC >0.99 at Full Load, THDi <7% at Load 100%					
<b>OUTPUT</b>	Voltage	220Vac ±1% / (200, 208, 230, 240 selecting on LCD panel and software)					
	Phase	Single Phase L-N+PE					
	Frequency	Normally locked to line frequency, Free Running 50Hz ±0.1% / (60 Hz selecting on LCD panel and software)					
	Wave Form	Pure Sine Wave					
	Harmonic Distortion	THDv ≤ 4% at Linear Load / ≤ 6% at Non Linear Load					
	Transient Condition	±5% for 100% Instantaneous Load Variation (Step Load)					
	Overload Capability	120% for 60sec, 150% for 30 sec, >150% for 300ms, then Automatic Switch to Bypass			120% for 60sec, 150% for 30 sec, >150% for 1sec, then Automatic Switch to Bypass		
	Crest Factor	3 : 1					
	Protection	Under/Over voltage, Overload, Shot Circuit, Over Temperature and Low Battery Shutdown					
<b>EFFICIENCY</b>	DC to AC	Approximate ≥ 87%			Approximate ≥ 92%		
	AC to AC	≥ 87% at Full Linear Load			≥ 92% at Full Linear Load		
<b>BATTERY</b>	Type	Sealed Lead Acid (Maintenance-free) Rechargeable Battery (High Rate/UL 94-V0 option)					
	Capacity	3x12V 7.5Ah	8x12V 7.5Ah		20x12V 7.5Ah		20x12V 9.4Ah
	Voltage	36Vdc	96Vdc		240Vdc		
	Standard Backup Time	15-30 min (Depend on Load)					
	Extend Backup Time	15-120 min Depend on Battery Unit Cap.					
	Recharge Time	3-6 hours to 90% after Load Backup					
	Charger Current (A)	Standard 1.5A / Long backup 3.5A (option)			Standard 1.5A / Long backup 3.5A (option)		
<b>TRANSFER TIME</b>	Main to Battery Mode Battery Mode to Main	Zero Transfer Time with Static Transfer Switch (ATS-SCR)					
<b>INDICATOR</b>	Front Panel LED	Line, Inverter, Bypass and Battery (Mimic)					
	Front Panel LCD	Operate UPS Status, Input Voltage, Output Voltage, Frequency, Bypass, Battery Voltage, % Battery, In-Out Frequency Remaining Backup Time, %Load, VA, Watt, Temperature, Fan and UPS Fault					
<b>PROTECTION</b>	EMI/RFI Attenuation	>40 dB					
	Surge Protection	Indoor: UL1449 Cat A, B / IEC 61643 LPZ3.2 In 3kA at 8/20µsec					
	Surge Energy Dissipation	SPD 300Vac : 220 Joules in 2msec at Power 30kW Imax 6kA					
<b>AUDIBLE ALARM</b>	Multiple Tones with Reset for Silence	Mains Failure, Low Battery, Overload and UPS Fault, Bypass Mode					
<b>INLET</b>	Tower UPS	Power cord 1.5 meter NEMA 5-15P			Terminal		
	Rackmount UPS	Power cord 1.5 meter NEMA 5-15P - IEC320 C13			Terminal		
<b>OUTLET</b>	Tower UPS	4 x National	4 x National + Terminal		Terminal		
	Rackmount UPS	4 x National or IEC320-C13			Terminal		
<b>COMMUNICATION INTERFACE</b>	USB Port	USB port can be connected to PC, Workstation or Servers for automatic unattended shutdown / RS485 / AS400 Dry Contact (option)					
	Software	UPSilon2000 supported for windows 95, 98, NT, 2000, Me, XP, Novell Netware, Linux, FreeBSD (IBM, Sun, Solaris option)					
	SNMP/HTTP	SNMP Card / AS400 Dry Contact / RS485 / NB IoT, 3G/4G-IoT					
<b>ACOUSTIC NOISE</b>	At 1 meter	< 45 dBA			< 50 dBA		
<b>ENVIRONMENT</b>	Temperature	0-40°C					
	Humidity	RH 0-95 % (Non-Condensing)					
<b>DIMENSIONS (WxDxH) mm</b>	Tower UPS/Long Backup	145x350x230	190x425x330		260x560x720		
	Rackmount UPS	483x450x88-2U			483x650x132-3U		
	Battery Unit Extension (option)	Separate (UPS and Battery Unit Extension)					
<b>WEIGHT (approximate in Kg.)</b>	Tower UPS	13	28	29	70	80	
	Rackmount UPS + Battery Unit	18(included)	14+23	14+23	26+59		28+69
	Battery Unit Rack (option)	Depending on Battery Capacity					
<b>CONFORMANCE</b>	Design Regulation	TIS.1291 Part1-2553 : Safety, TIS.1291 Part2-2553 : EMC, TIS.1291 Part3-2555 : Performance Cat, C1 CE : IEC / EN62040-1, IEC / EN 62040-2, IEC / EN 62040-3, IEC / EN 50091-1,-2, IEC / EN 55022, IEC / EN 61000					

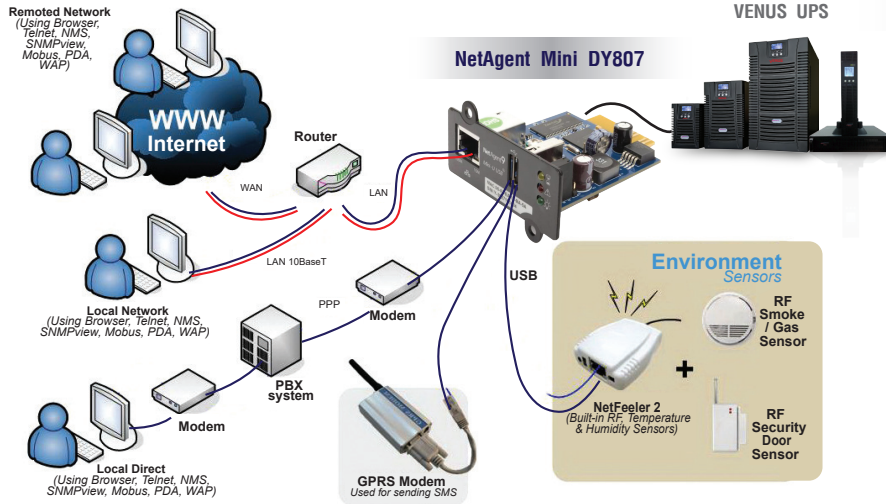
\*R = Rack Mount UPS

\*Long backup Please call chuphotic

\*All above specification may be change without prior notice.

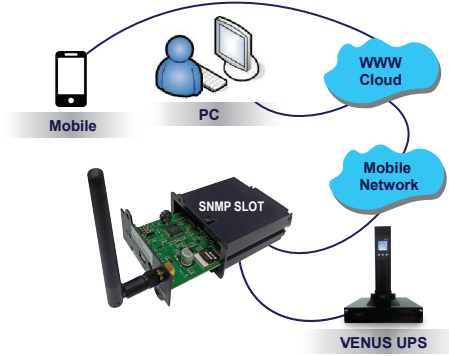
SP12.CHU-EN.BRO-39.UPS.VENUS ULTIMATE PLUS.Rev1.00/2021

# Communication and Power Management Solutions



Advanced, multi-platform communication, for all operating systems and network environments

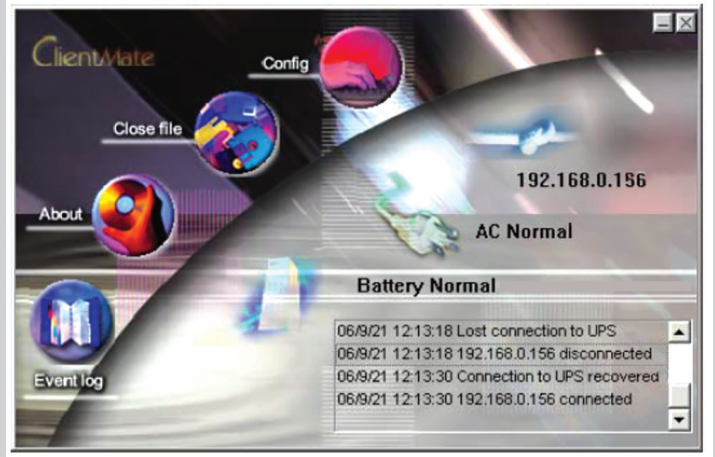
## Internet of Think : NB IoT, 3G/4G-IoT



- Mobile Network for Uninfrastructure Area
- EASY to install standalone UPS
- Support Mobile : NB IoT, 3G/4G-IoT
- Low cost Service & Monitoring
- Monitoring in AC Input / Output, Battery, Temp.
- Event log / Data log in Days, Weeks, Months, Years

## ADVANCED COMMUNICATION

- Comprehensive UPS management with flexible configuration via Web Browser, NMS, Telnet or SNMP.
- Support Advance Encryption: HTTPS, SSL, SSH, SNMPv3
- Centralized Authentication by Radius
- Event notification via E-mail, SMS or Trap
- Support NetFeeler II (Environment Monitoring) with Temperature, Humidity, Water presence, Smoke and Door sensors
- Support USB Wifi 802.11b/g, USB flash disk / external USB HDD, compatible USB camera & more
- Support UPS MIB, RFC1628, PPC MIB
- Support GPRS modem
- Multi-language user interface
- Real-time UPS Monitoring
- Schedule periodic UPS self-test
- Record Event log / Data log
- Can also provide shut-down software for: IBM AIX; Free BSD; BSDI UNIX; BSD / OS; SCO Unixware; SCO Openserver; Sun Solaris; Compaq True64; HP UNIX; HP OpenVMS; HP Openview; SGI Irix MIPS; NCR UNIX
- Battery test log



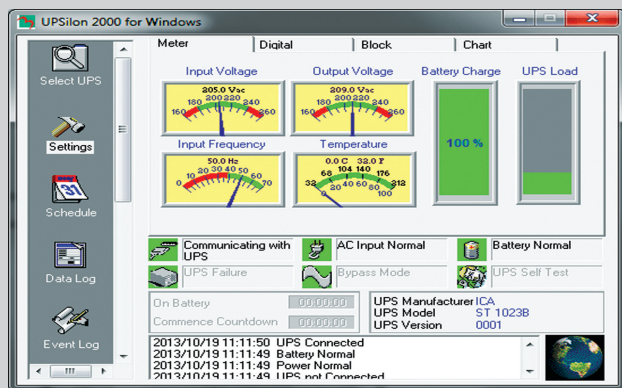
## AS-400 Card (Dry Contact)

The AS400 communication card provides contact closures for remote monitoring your UPS. To meet different application requirement, the AS400 card is capable of selection the status of the dry-contact signal (active close or active open) by setting jumper. This suitable applications are listed below:

- IBM Server, Personal PC & Workstations equipments
- Auto-controlled industrial equipment & communication applications

## Internet of Think : NB IoT, 3G/4G-IoT (Mobile Network)

- Mobile Network for LAN-Uninfrastructure Area
- Easy to Install Standalone UPS or Independent Network
- Economic Low cost Service & Monitoring
- Mobile Network & Data log Cloud for Computer & mobile
- Monitoring in AC Input/Output, Battery, Temperature
- Event log / Data log in Days, Weeks, Months, Years



## UPSilon 2000 UPS Monitoring software

USB Port For Microsoft Windows 2000 / Microsoft Windows Me / Microsoft Windows XP / Vista, Microsoft Windows 8, Microsoft Windows 2010  
Plat form : Novell NetWare, Linux, FreeBSD

Applications;

- Auto sending warning messages by e-mail.
- Auto detecting AC power failure and UPS battery low.
- Providing the UPS expected time setting of power supply.
- History data recording.
- Auto shutting down the system and turning off the UPS when AC power failed.
- Broadcasting the warning messages to all the workstations.
- Display the system shutdown countdown.
- Able to operate on server and workstation.
- Schedule on / off in a week
- Programmable UPS auto-testing period.
- UPS status reporting on server screen, including the input / output voltage, load, line frequency, temperature and so on.
- Local Network UPS monitoring through an Net Agent or SNMP Agent.

## CHUPHOTIC Co.,Ltd.

949 Moo 9, Sumrong-Nue, Muang Samutprakarn, Samutprakarn 10270  
Tel. : 02 186 3010 (Auto) Fax : 02 186 3018-19  
www.chuphotic.com E-mail: ups@chuphotic.com

**Authorized Dealer :**