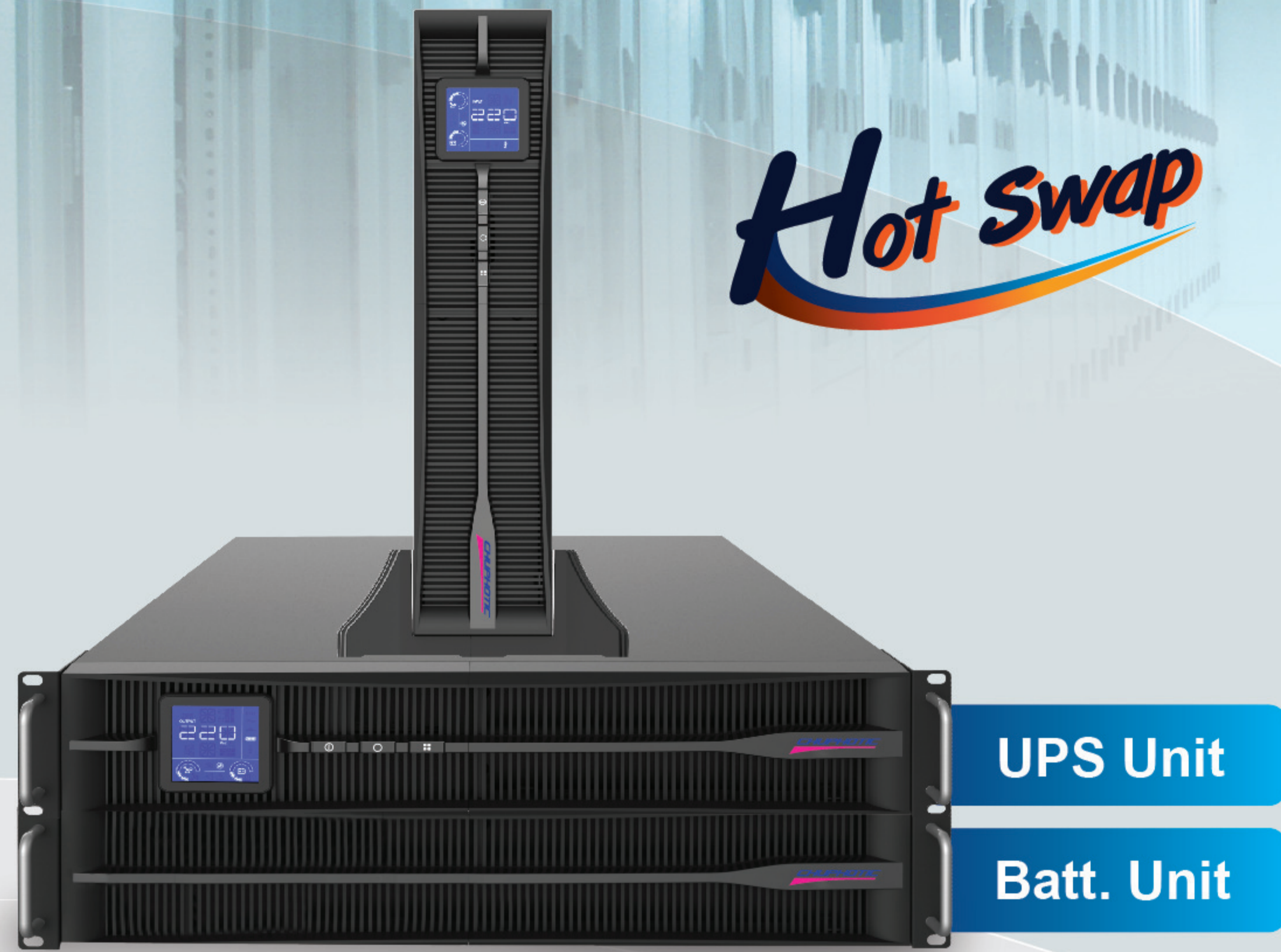


VENUS KR Plus Rack Mount

1-10kVA Tower / Rack mount with Hot Swap Battery

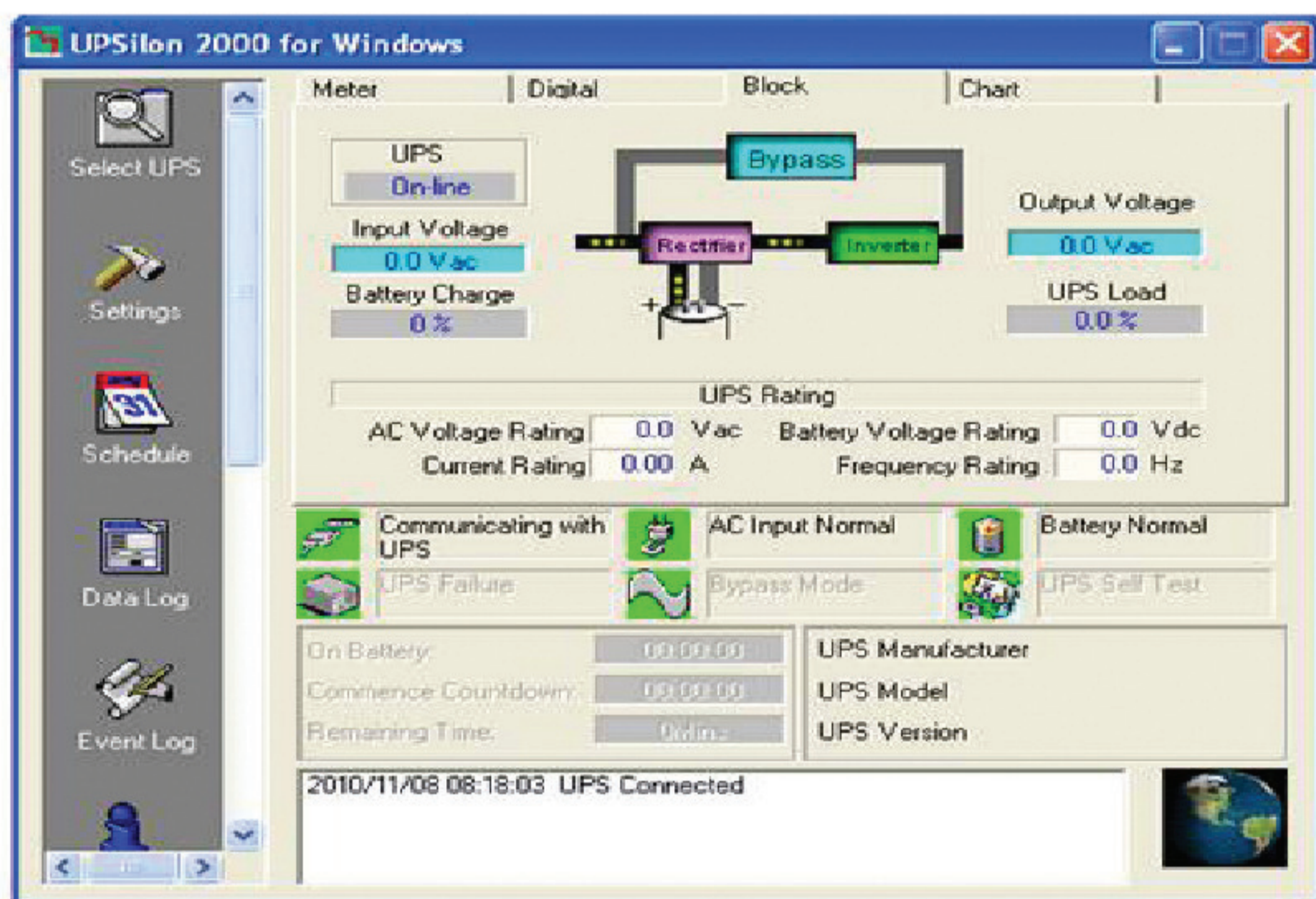
DSP TRUE ONLINE DOUBLE CONVERSION UPS



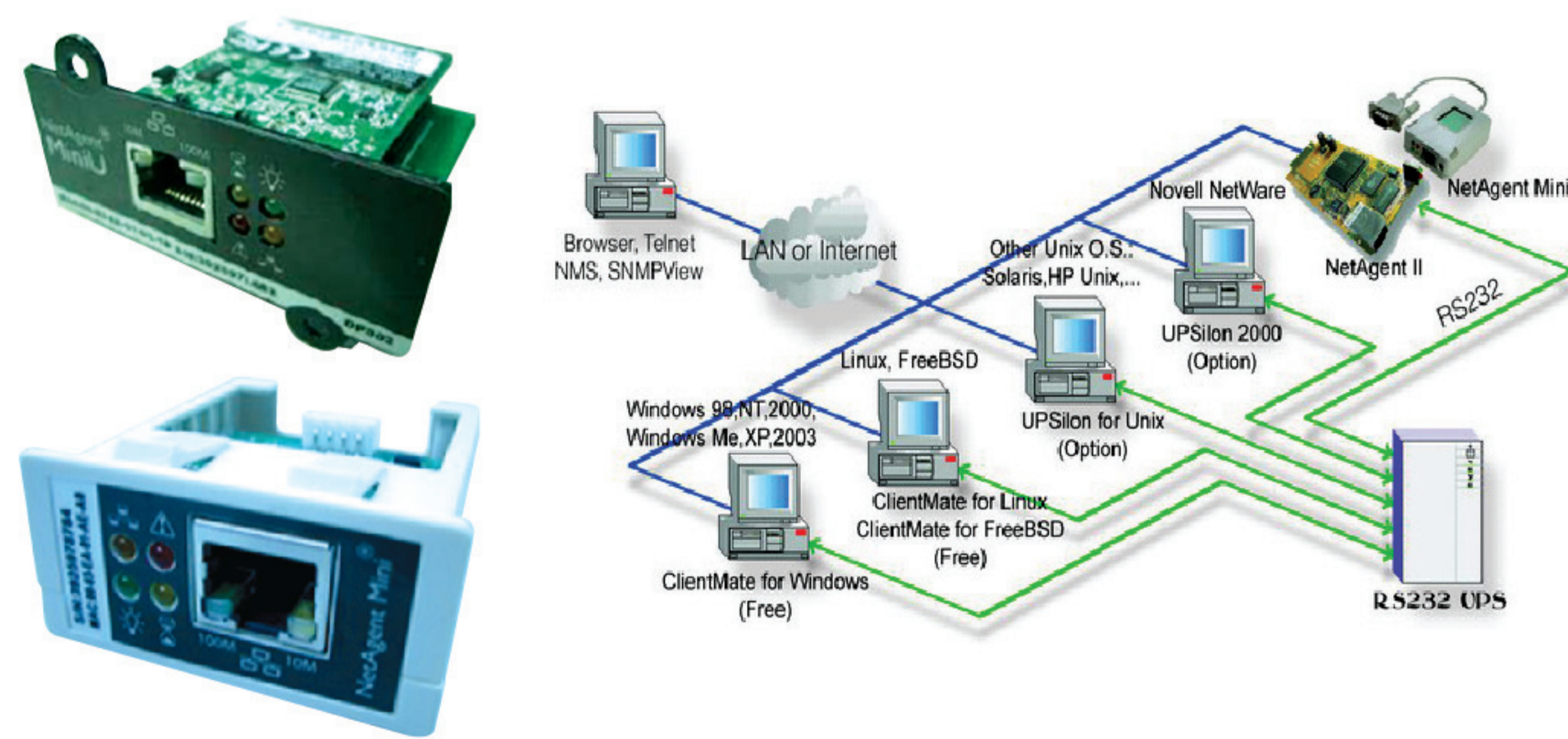
Hot Swap

Features

- Advance digital DSP control and IGBT technology
- High input power factor control(PFC)>0.99
- Pure sine wave output less than 2%THDv
- High inverter efficiency(approx.≥95%)
- Wide input voltage range 120 - 295Vac
- Zero transfer time
- Output voltage 220V ±1% at PF0.9
- Self-diagnosis at UPS start-up with LCD
- Advanced battery management (ABM)
- Rack / Tower with Hot Swap Battery
- Surge, spike, blackout, brownout, overload and short circuit protection
- Economy mode(ECO) 5-10kVA
- Optional Rack extension battery for long backup
- Manual bypass switch(option)
- EMI/RFI and power line noise protection
- RS232/ USB Serial Port with UPSilon2000
- SNMP / HTTP / RS485 / Dry Contact Card(Optional)
- TIS 1291 Part 1-2553, Part 2-2553, Part 3-2555:C1
CE:EN62040-1,-2,-3, EN50091-1, -2, UL E337869
- ISO9001 : 2015, ISO14001 : 2015 certified MFG



UPSilon 2000 UPS monitoring software



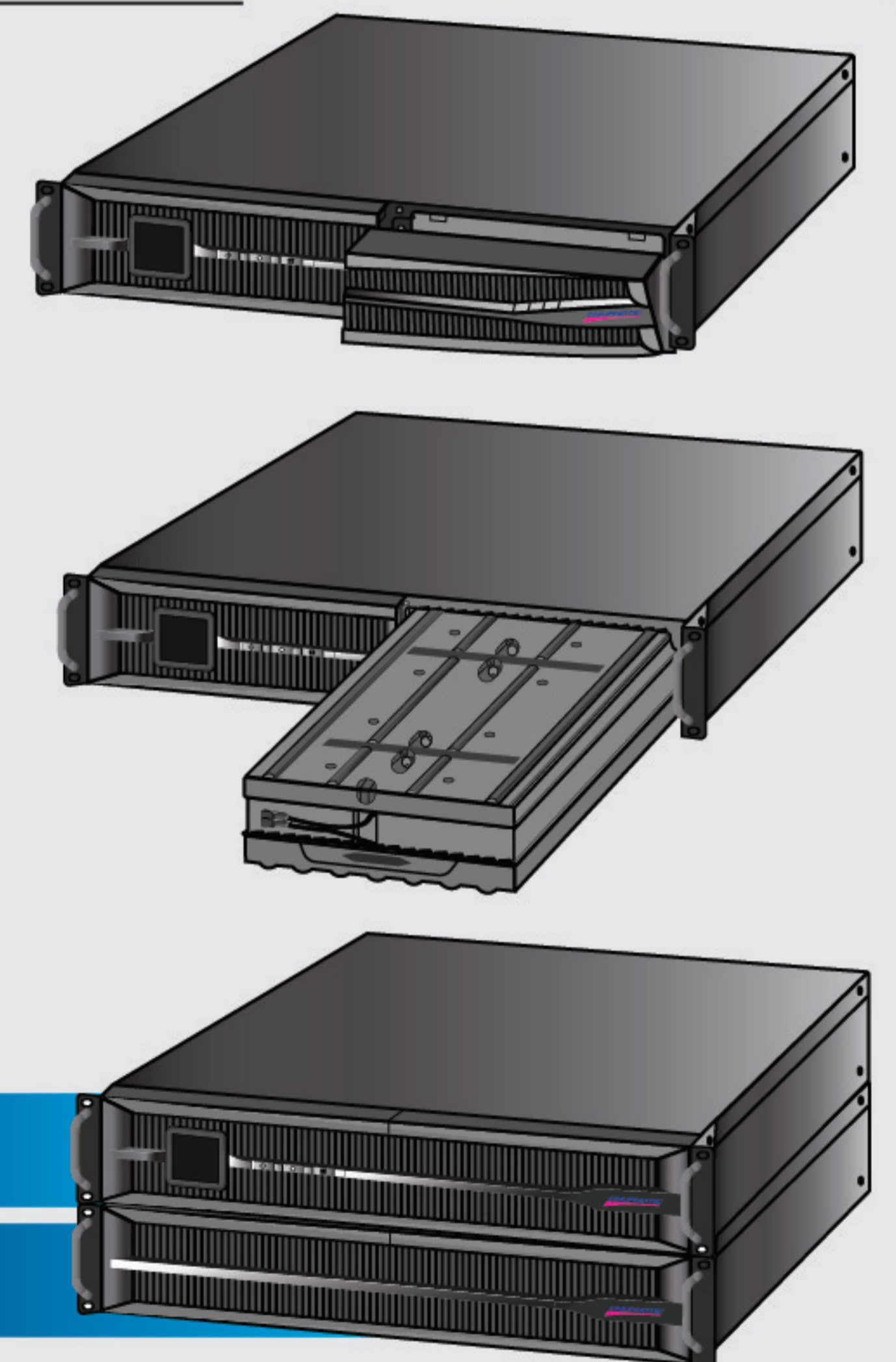
SNMP/HTTP monitor capability (option)

Chuphotic UPS have range from 500VA to 1000KVA is also widely used to protect electronic equipments such as computer, server, networks, PABX, CCTV, telecommunications, medical, scientific equipment and industrial, etc. from blackout, brownout, surge, spike, harmonic, noise and frequency drift.

Rack Mount



Hot Swap Battery



UPS Unit

Batt. Unit



มอก.1291
 เล่ม 1-2553
 เล่ม 2-2553
 เล่ม 3-2555



www.chuphotic.com

VENUS KR Plus Rack Mount

1-10kVA Tower / Rack mount with Hot Swap Battery



SPECIFICATIONS

| Model | Rack mount (Standard UPS) | KR1000PRM | KR2000PRM | KR3000PRM | KR5000PRM | KR6000PRM | KR1110PRM |
|---|--|--|-----------------------|--------------|---|--------------|---------------|
| CAPACITY | For computer load | 1000VA/900W | 2000VA/1800W | 3000VA/2700W | 5000VA/4500W | 6000VA/5400W | 10000VA/8000W |
| SYSTEM | Controller | Intelligent UPS with DSP control | | | | | |
| | Technology | High Frequency Double Conversion, Power Factor control(PFC) with IGBT Technology | | | | | |
| INPUT | Voltage | 220 Vac Single phase nominal voltage | | | | | |
| | Voltage range | 220Vac: -45% to +35% | | | 220Vac: -35% to +25% | | |
| | Frequency | 50/60 Hz ±6% (auto detect) at nominal voltage (±10% option) | | | | | |
| | Power factor | >0.99 at full load (THDi<3%) | | | | | |
| OUTPUT | Voltage | 220V ±1% (Selectable 208V/220V/230V/240V) | | | | | |
| | Phase | Single phase | | | | | |
| | Frequency | Normally locked to line frequency, Free running 50Hz ±0.1% (Crystal control) | | | | | |
| | Wave form | Pure sine wave | | | | | |
| | Harmonic distortion THDv | <2% at full load(100% linear load), <5% at full load(100% non linear load) | | | | | |
| | Transient condition | ±5% for 100% instantaneous load variation | | | | | |
| | Overload capability | 130% for 60 sec., 150% for 30 sec., >150% for 300ms, automatic transfer to bypass | | | 125% for 10min., 150% for 1 min., >150% for 1sec., automatic transfer to bypass | | |
| | Crest factor | 3 : 1 | | | | | |
| EFFICIENCY | DC to AC | Approximate ≥ 87% | | | Approximate ≥ 92% | | |
| | AC to AC | Approximate ≥ 92% | | | Approximate ≥ 95% | | |
| BATTERY | Type | SLA : Seal Lead Acid Battery(maintenance-free) Rechargeable | | | | | |
| | Capacity | 3×12V 9.4 Ah | 4×12V 9.4Ah | 6×12V 9.4Ah | 16×12V 9.4 Ah | | |
| | Voltage | 36Vdc | 48Vdc | 72Vdc | 192Vdc | | |
| | Standard backup time | 15-30 min. (Depend on computer load) | | | | | |
| | Extend backup time | Optional with EXT.Battery Unit (RACK MOUNT) | | | | | |
| | Recharge time | 6-8 hours to 90% after load discharged | | | | | |
| | Charger Current(A) | Standard:1A / Long back up: 4A | | | Standard:1A / Long back up: 1-8A Adjustable | | |
| Battery temperature compensation for recharge | Option | | | | | | |
| TRANSFER TIME | Main fail or Recover UPS to by pass and vice versa | Zero time (True On-line UPS) | | | | | |
| INDICATOR | Front panel LCD SWITCH | AC Input & Output Voltage, Frequency, Load Level, Battery Level Temperature UPS STATUS : AC mode, Battery mode, Bypass mode and Fault with switch ON, OFF, Function | | | | | |
| | | | | | | | |
| PROTECTION | EMI/RFI attenuation | >40 dB | | | | | |
| | Surge protection | UL recognized surge protection to std.1449 | | | | | |
| | Surge energy dissipation | 220 Joules (510 Joules option)(2 microsec wave form) | | | | | |
| AUDIBLE ALARM | Multiple tones with reset for silence | Mains Failure, Low battery, Overload and UPS fault | | | | | |
| INPUT PLUG | Power cord 1.5 meter | IEC320 C14 / NEMA 5-15P | | | Terminal | | |
| OUTPUT OUTLET | Rack mount | 4 - 6xNational (Terminal option) | | | Terminal | | |
| COMMUNICATION INTERFACE | DB-9 connector | RS-232, USB serial port can be connected to PC, workstation or servers for automatic unattended shutdown / with EPO contact | | | | | |
| | Software | UPSilon2000 supported for windows 95, 98, NT, 2000, Me, XP, Novell Netware Linux, FreeBSD (IBM, Sun, Solaris option) | | | | | |
| | SNMP/HTTP capability. | Option SNMP CARD , Environment set | | | | | |
| ACOUSTIC NOISE | At 1 meter | < 50 dBA | | | < 55 dBA | | |
| ENVIRONMENT | Temperature | 0-45°C | | | | | |
| | Humidity | 0-95 % (Non-Condensing) | | | | | |
| DIMENSIONS (W×H×D) mm. | Standard UPS Rack 19 inch | 440×88×420 (2U) | 440 × 88 × 570 (2U) | | 440 × 88 × 500 (2U) | | |
| | Long backup UPS Rack 19 inch | 440×88×420 (2U) | 440 × 88 × 570 (2U) | | 440 × 88 × 500 (2U) | | |
| | Battery Unit for UPS | - | 440 × 88 × 570 (2U) | | 440 × 88 × 500 (2U) | | |
| WEIGHT (approximate in Kg.) | Standard UPS | 13 | 20 | 25 | 11 | 12.5 | |
| | Long backup UPS | 6 | 10 | 10 | 11 | 12.5 | |
| | Battery Unit for UPS | - | 14 | 19 | 44.5 | | |
| CONFORMANCE | Design regulation | TIS.1291 Part1-2553, Part2-2553, Part3-2555 : C1, CE : EN 62040-1, EN 50091-1, EN 62040-2, EN 50091-2, UL no.E337869 | | | | | |

All above specification may be change without prior notice.

Chuphotic.BRO-58.UPS VENUS KR Plus Rack Mount Hot Swap.Rev1.00/2019

บริษัท ชูปัททิก จำกัด

949 หมู่ 9 ต.ลำไทรเหนือ อ.เมืองสมุทรปราการ จ.สมุทรปราการ 10270

โทรศัพท์: 02 186 3010 แฟกซ์: 02 186 3018-9

www.chuphotic.com

E-mail: ups@chuphotic.com

ตัวแทนจำหน่าย :