

VENUS KR Plus Rack Mount

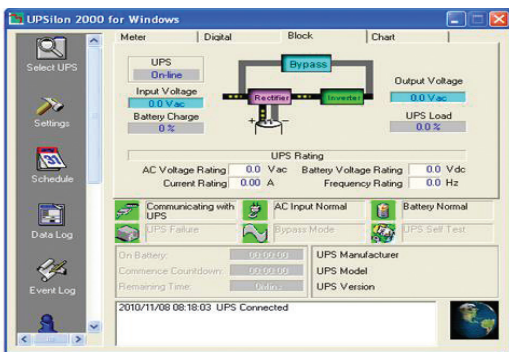
1-10kVA



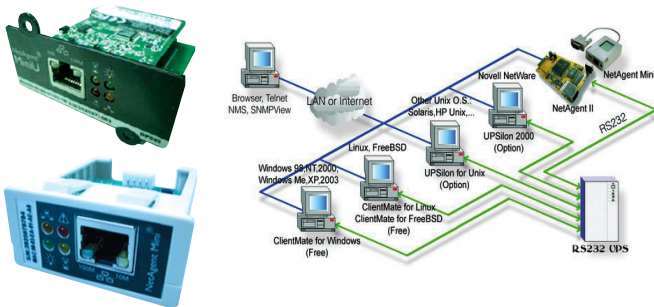
DSP TRUE ONLINE DOUBLE CONVERSION UPS

Features

- True on-line Double Conversion UPS
- Advance digital DSP control and IGBT technology
- High input power factor control(PFC)>0.99
- Pure sine wave output less than 2%THD
- High inverter efficiency(approx.≥95%)
- Wide input voltage range 120 -295Vac
- Zero transfer time
- Output Power Factor 0.9
- Output voltage 220V ±1%
- Self-diagnosis at UPS start-up
- Advanced battery management (ABM)
- Surge, spike, blackout, brownout, overload and short circuit protection
- Economy mode(ECO) 5-10kVA
- Optional external battery bank
- Manual Bypass Switch(option)
- EMI/RFI and power line noise protection
- RS232/RS485/USB Communication with UPSilon2000 monitoring
- SNMP/HTTP monitor capability(option)
- TIS.1291 Part 1-2553, Part 2-2553, Part 3-2555 : C1
- CE : EN62040-1:LVD, IEC62040-2:EMC, IEC62040-3:C1
- ISO9001 : 2015, ISO14001 : 2015 Certified MFG



UPSilon 2000 UPS monitoring software



SNMP/HTTP monitor capability (option)

Chuphotic UPS have range from 500VA to 1000KVA is also widely used to protect electronic equipments such as computer , server, networks, PABX, CCTV, telecommunications, medical, scientific equipment and industrial, etc. from blackout, brownout, surge, spike, harmonic, noise and frequency drift.

VENUS KR Plus Rack Mount

1-10kVA

SPECIFICATIONS

Model	Rack mount (Standard UPS)	KR1000PR	KR2000PR	KR3000PR	KR5000PR	KR6000PR	KR1110PR
	Rack mount (Long backup UPS)	KR1000PRL	KR2000PRL	KR3000PRL	KR5000PRL	KR6000PRL	KR1110PRL
CAPACITY	For computer load (VA/W)	1000/900	2000/1800	3000/2700	5000/4500	6000/5400	10000/8000
SYSTEM	Controller	Intelligent UPS with DSP control					
	Technology	High Frequency Double Conversion, Power Factor Control(PFC) with IGBT Technology					
INPUT	Voltage	220 Vac Single phase nominal voltage			220 Vac Single phase nominal voltage		
	Voltage range	220Vac: -45% to +35%			220Vac: -35% to +25%		
	Frequency	50/60 Hz \pm 6% (auto detect) at nominal voltage (\pm 10% option)					
	Power factor	>0.99 at full load(THDi<5%)					
OUTPUT	Voltage	220Vac \pm 1%(L-N+PE)					
	Phase	Single phase (50/60Hz)					
	Frequency	Normally locked to line frequency, Free running 50Hz \pm 0.1% (Crystal control)					
	Wave form	Pure sine wave					
	Harmonic distortion	< 2% at full load (Linear load), < 5% at full load (Non linear load)					
	Transient condition	\pm 5% for 100% instantaneous load variation(STEP LOAD)					
	Overload capability	130% for 60 sec., 150% for 30 sec., >150% for 300ms, automatic transfer to Bypass			125% for 10min., 150% for 1 min., >150% for 1sec., automatic transfer to Bypass		
	Crest factor	3 : 1					
EFFICIENCY	DC to AC	Approximate \geq 87%			Approximate \geq 92%		
	AC to AC	Approximate \geq 92%			Approximate \geq 95%		
BATTERY	Type	SLA : Seal Lead Acid Battery(maintenance-free) Rechargeable					
	Capacity	3x12V 9.4 Ah	4x12V 9.4Ah	6x12V 9.4Ah	16x12V 9.4 Ah		
	Voltage	36Vdc	48Vdc	72Vdc	192Vdc		
	Standard backup time	15-30 min. (Depend on computer load)					
	Extend backup time	Option					
	Recharge time	6-8 hours to 90% after load discharged					
	Charger Current(A)	Standard - 1A/Long Backup - 4A			Standard - 1A / Long Backup : 1-8A Adjustable		
	Battery temperature compensation for recharge	Option					
TRANSFER TIME	Main fail or Recover UPS to by pass and vice versa	Zero time (True On-line UPS)					
INDICATOR	Front panel LED	Line, Inverter, Bypass, Battery, L-N input warning and Fault					
	Front panel LCD	Input / Output Voltage, Frequency, Battery Voltage, % Load, Temperature and UPS status					
PROTECTION	EMI/RFI attenuation	>40 dB					
	Surge protection	UL recognized surge protection to std.1449					
	Surge energy dissipation	220 Joules (510 Joules option)(2 microsec wave form)					
AUDIBLE ALARM	Multiple tones with reset for silence	Mains Failure, Low battery, Overload and UPS fault					
INPUT PLUG	Power cord 1.5 meter	NEMA 5-15P			Terminal		
OUTPUT OUTLET	Rack mount	3 - 4xNational (Terminal option)			Terminal		
COMMUNICATION INTERFACE	DB-9 connector	RS-232 serial port can be connected to PC, workstation or servers for automatic unattended shutdown and EPO & ECO (Option)					
	Software	UPSilon2000 supported for windows 95, 98, NT, 2000, Me, XP, Novell Netware Linux, FreeBSD (IBM, Sun, Solaris option)					
	SNMP/HTTP capability.	SNMP Card, AS400 Card - Dry Contact, GPRS Modem, Environment					
ACOUSTIC NOISE	At 1 meter	< 50 dBA			< 55 dBA		
ENVIRONMENT	Temperature	0-45°C					
	Humidity	0-95 % (Non-Condensing)					
DIMENSIONS (W×H×D) mm.	Standard UPS Rack 19 inch	440 × 88 × 420 (2U)			440 × 88 × 500 (2U)		
	Long backup UPS Rack 19 inch	440 × 88 × 420 (2U)			440 × 88 × 500 (2U)		
	Battery Unit for UPS	440 × 88 × 420 (2U) (Batt 6-8PCS)			440 × 130 × 500 (3U) (Batt 16PCS)		
WEIGHT (approximate in Kg.)	Standard UPS	13(+Batt)	8	8	11	12.5	
	Long backup UPS	7	8.5	8.5	11	12.5	
	Battery Unit for UPS	8 / 14	13	18	45 (Batt 16PCS)		
CONFORMANCE	Design regulation	TIS.1291 Part1-2553, Part2-2553, Part3-2555 : C1 CE : EN 62040-1: LVD, IEC 62040-2 : EMC, IEC 62040-3 Performance, UL no.E337869					

All above specification may be change without prior notice.

Chuphotic.BRO-50.UPS VENUS KR Plus Rack Mount.Rev1.00/2019

บริษัท ชูโฟติก จำกัด

949 หมู่ 9 ต.ลำไทรเหนือ อ.เมืองสมุทรปราการ จ.สมุทรปราการ 10270

โทรศัพท์: 02 186 3010 แฟกซ์: 02 186 3018-9

www.chuphotic.com

E-mail: ups@chuphotic.com

ตัวแทนจำหน่าย :